

# Illicit Discharge Ordinance Background Sunnyside City Council

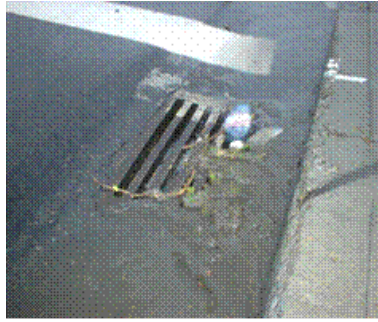
July 27, 2009

Brian Cochrane  
Yakima County  
Regional Stormwater Lead



*Ecology Permit*  
*Stormwater Program Requirements*

1. Public Education
2. Public Involvement
3. Illicit Discharge Detection  
& Elimination
4. Construction Site  
Stormwater Runoff Control
5. Post-construction  
Stormwater Management
6. Pollution Prevention &  
Good Housekeeping



1. TMDL Compliance
2. Monitoring

## *Regional ILA*

What makes sense  
to do once?

What do the local  
communities do  
best?

Does the benefit of  
regionalization offset  
the cost of regional  
administration?



## *A Model Ordinance*

Ensures permit  
compliance

Provides regional  
consistency

Provides flexibility to  
incorporate into  
local codes



## *What's Illicit?*

Any discharge to the  
Municipal Separate  
Storm Sewer  
System (MS4)

Except:

Discharges under  
another NPDES  
permit, and

Emergency  
Firefighting



## *What's Allowed?*

Diverted stream flows;  
Rising ground waters;  
Uncontaminated ground water  
Foundation drains;  
Air conditioning condensation;  
Irrigation water from agricultural  
sources that is commingled  
with urban stormwater;  
Springs;  
Water from crawl space pumps;  
Footing drains; and  
Flows from riparian habitats and  
wetlands.  
Discharges from lawn watering  
and other irrigation runoff.



## *What's Allowed, With Conditions?*

### 1. Discharges from potable water sources:

- water line flushing,
- hyperchlorinated water line flushing,
- fire hydrant system flushing,
- firefighting training
- pipeline hydrostatic test water
- swimming pool discharges (not filter backwash)

### **IF:**

- Declorinated
- pH adjusted
- Velocity controlled



(photo from Kerr, Wood, Leidal presentation to City of Port  
Coquitlam, BC  
[http://kwl.bc.ca/docs/BCWWA2009\\_JEF\\_Presentation.pdf](http://kwl.bc.ca/docs/BCWWA2009_JEF_Presentation.pdf))

## *What's Allowed, With Conditions?*

Street and sidewalk wash water, water used to control dust, and routine external building wash down water provided:

- It does not contain detergents.
- Streets and sidewalks are swept and material removed prior to washing.

At active construction sites, street sweeping shall be performed prior to washing the street.



Dye Testing (with notification)



## *Other Sections of the Ordinance*

Definitions

Illicit Connections Prohibited

Steps the municipality may  
take in response to illicit  
connection or discharge

Right of entry

Increasing levels of  
enforcement



## *Public Involvement*

Two draft model ordinances  
circulated to stakeholders  
for review and comment

Model ordinance Public  
Meeting held May 19<sup>th</sup>.

City of Yakima Public  
Meeting held June 26<sup>th</sup>.

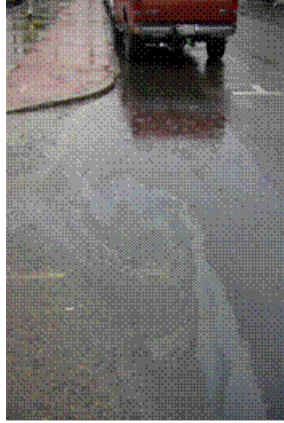
City of Yakima Adopted July  
7<sup>th</sup>.

Yakima County Public  
Hearing and Adoption Aug.  
11.



## Summary

- An “ordinance or other regulatory mechanism” is a Permit Requirement
- A model ordinance provides regional consistency and permit compliance
- Adoption deadline is August 16<sup>th</sup>, 2009



Questions?