

Public Services

128 North Second Street • Fourth Floor Courthouse • Yakima, Washington 98901
(509) 574-2300 • 1-800-572-7354 • FAX (509) 574-2301 • www.co.yakima.wa.us

VERN M. REDIFER, P.E. - Director

July 23, 2010

ATTENTION: ALL BIDDERS AND PLAN HOLDERS

RE: C 3018 – Phase 2 – Hall Road
C 3188 – Hadley Drive

ADDENDUM NO. 1

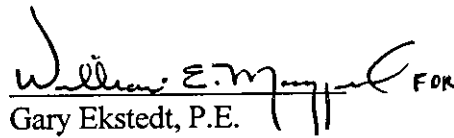
You are hereby notified that the plans and specifications for the above referenced project are amended as explained below.

The Contract Plans are revised as follows:

Replace Sheet 9 of the Plans with Sheet 9 – Addendum No. 1, dated July 23, 2010. This revision clarifies that the poplar trees from Sta. 21+60+/- to Sta. 23+00+/- Lt. shall be removed.

In order to incorporate the above noted change into this project, remove the existing Plan Sheet 9 and replace with the attached Plan Sheet 9 – Addendum No. 1.

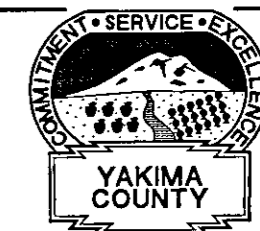
All bidders shall be required to furnish the Yakima County Engineer with evidence of the receipt of this Addendum. This Addendum shall be incorporated in and made a part of the contract when awarded and formally executed.


Gary Ekstedt, P.E.
County Engineer

PROJECT3018-Phase 2ADDENDUM 1

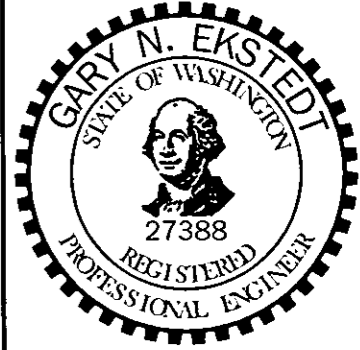
Yakima County ensures full compliance with Title VI of the Civil Rights Act of 1964 by prohibiting discrimination against any person on the basis of race, color, national origin, or sex in the provision of benefits and services resulting from its federally assisted programs and activities. For questions regarding Yakima County's Title VI Program, you may contact the Title VI Coordinator at 509-574-2300.

If this letter pertains to a meeting and you need special accommodations, please call us at 509-574-2300 by 10:00 a.m. three days prior to the meeting. For TDD users, please use the State's toll free relay service 1-800-833-6388 and ask the operator to dial 509-574-2300.



HALL ROAD
IMPROVEMENT
PROJECT
MAPLEWAY ROAD TO
END OF ROAD
C 3018-PHASE 2

PREPARED UNDER
THE DIRECTION OF:



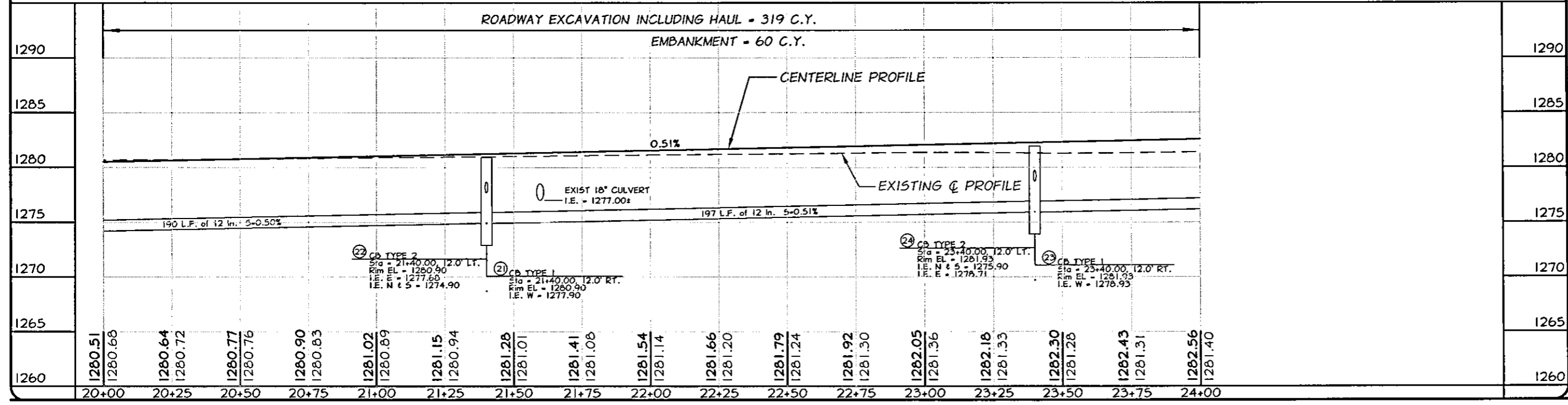
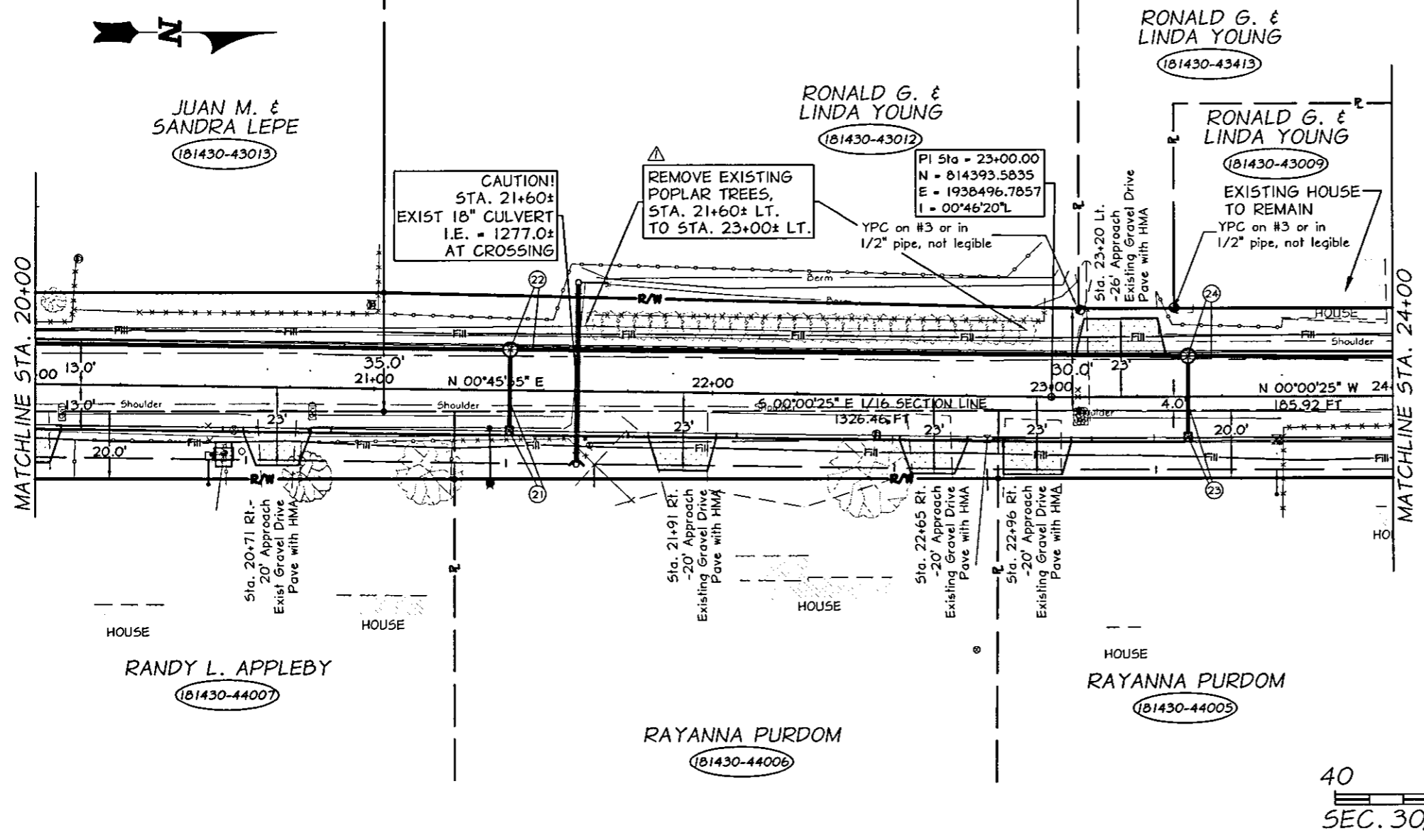
COUNTY ENGINEER
DATE:

PROJECT ENGINEER:
W. MAGGARD
DRAWN:
J. MATTHEWS
CHECKED BY:
D. TAMSKY
REVISION: REMOVE TREES
NOTE

PLAN AND PROFILE
STA. 20+00
TO
STA. 24+00

SHEET 9 OF 29
ADDENDUM NO. 1

HALL ROAD



C:\engis\point\software\3018\hall\road\p\drawing\11180.dwg, 7/23/2010, 1:57:04 PM