

**BOARD OF YAKIMA COUNTY COMMISSIONERS**  
Weekly Agenda Meeting Tuesday, March 10, 2020  
City Council Chambers 129 N 2nd Street Yakima, WA 98901

3/10/2020 - Minutes

1. CALL TO ORDER

PRESENT: Chairman Norm Childress, Commissioner Ron Anderson, Commissioner Vicki Baker, Legal Counsel Don Anderson, Clerk of the Board Melissa Paul.

2. PUBLIC COMMENT

None

3. CONSENT ITEMS

Commissioner Baker MOTION: To Approve

Commissioner Anderson: SECOND

Approved Unanimously

A. Voucher Warrant

B. Minutes March 3, 2020

C. Resolution 76-2020

D. Resolution 77-2020

E. Resolution 78-2020

F. Resolution 79-2020

G. Resolution 80-2020

H. Resolution 81-2020

I. Resolution 82-2020

J. Resolution 83-2020

K. Agreement 64-2020

L. Agreement 65.2020

M. Agreement 66-2020

N. Agreement 68-2020

4. REGULAR AGENDA

A. Resolution 75-2020 Yakima County Facilities Director Brian Griff Presenting

Resolution to reject all bids received for the Yakima Valley Sundome Facility Improvements Project.

The low bidder submitted an incomplete (non responsive) bid. The second bid was significantly higher than the project estimate. Only two bids were received. The Facilities Director recommends rejecting all bids.

Commissioner Baker MOTION: To approve the resolution rejecting all bids.

Commissioner Anderson SECOND.

Approved Unanimously

B. Agreement 67-2020 Joe Stump Presenting On Behalf Of Yakima County Public Services

Water extension agreement with Hayden Homes for extending water mains from the Terrace Heights Water System. Hayden Homes will reimburse Yakima County for the costs associated with this project.

Commissioner Baker MOTION: To approve Agreement 67-2020

Commissioner Anderson SECOND

Approved Unanimously

5. NEW BUSINESS

None

6. ADJOURN

Commissioner Baker MOTION: To adjourn

APPROVED DATE

DATE/Minutes

BOARD OF YAKIMA COUNTY COMMISSIONERS

\_\_\_\_\_  
Norm Childress, Chairman

\_\_\_\_\_  
Ron Anderson, Commissioner

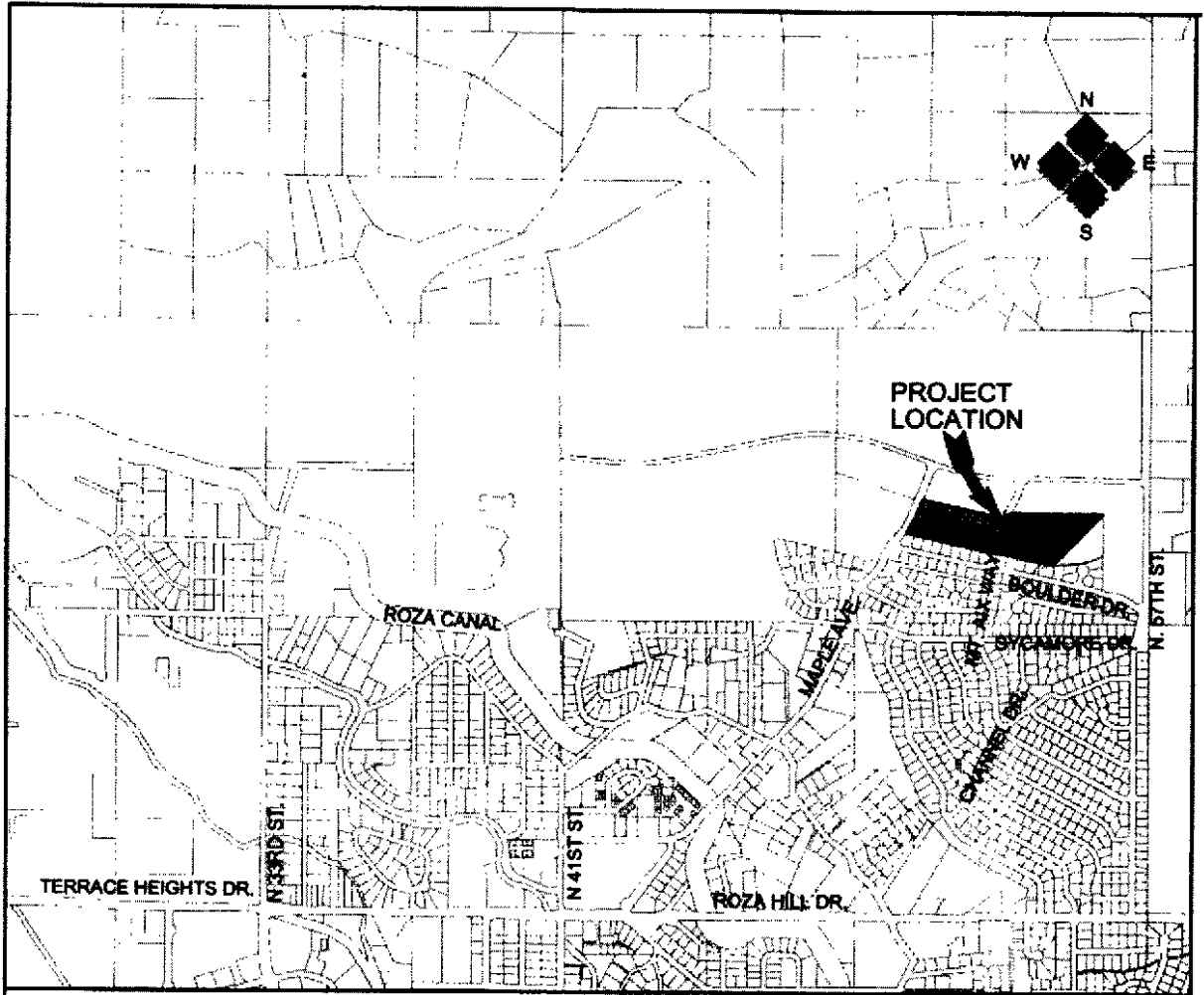
\_\_\_\_\_  
Victoria L Baker, Commissioner  
*Constituting the Board of County Commissioners  
for Yakima County, Washington*

## March 10, 2020 Yakima Ridge – Speaking Points

1. Good morning Commissioners, I'm Joe Stump Yakima County Utilities Manager
2. The water extension agreement with Hayden Homes describes the roles and responsibilities of the County and Hayden Homes in extending water service to their long plat known as Yakima Ridge Phase 3.
3. The long plat includes 46-lots and is located on the north side of Terraced Estates between Maple Avenue and 57<sup>th</sup> Street.
4. Under the agreement, Hayden Homes is responsible for hiring a consultant to design the improvements and for hiring a contractor to build the improvements.
5. Yakima County staff will review and approve the plans and inspect the construction.
6. Hayden Homes will reimburse the County for the inspection costs, which are estimated at \$16,000.
7. Following construction, Yakima County will assume ownership and operation of the water system improvements.
8. The improvements include approximately 3500 feet of 8" and 12" waterline.
9. We ask that you consider approving the water extension agreement.

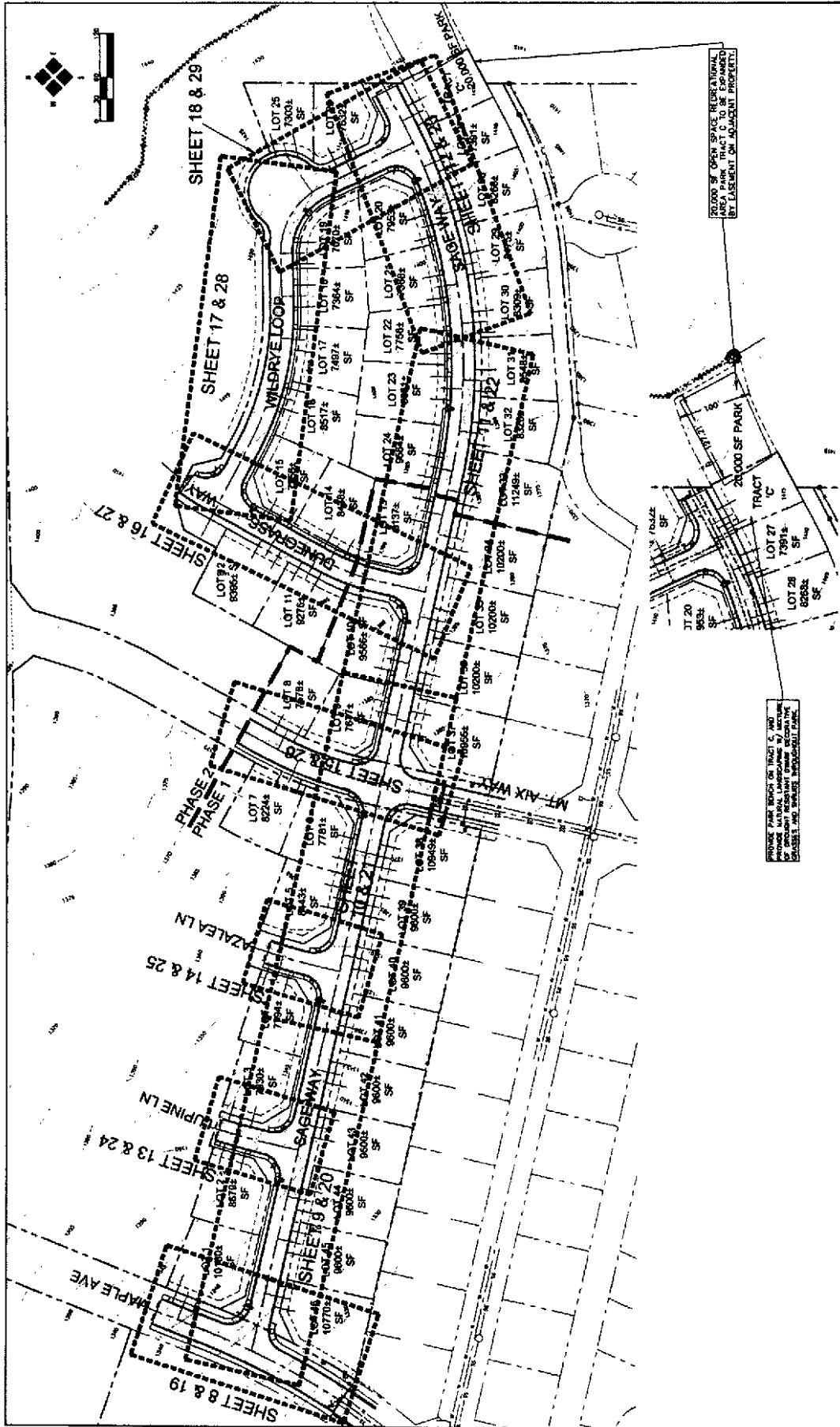
## Other

1. Estimated waterline construction cost approximately \$350,000.
2. We currently have approximately 1,700 customers on the Terrace Heights Water System.





**Vicinity Map**

**Plat of Yakima Ridge Phase 3**



20,000 SF OPEN SPACE, RELIEF A NATURAL AREA PARK TRACT C TO BE EXPANDED BY ADJACENT DEVELOPMENT PROJECTS

RESERVE FOR PHASE 2 TRACT C. THIS PHASE WILL BE DEVELOPED BY ANOTHER PROJECT. REVISIONS TO THIS PLAN WILL BE MADE AS NECESSARY TO ACCURATELY REFLECT THE DEVELOPMENT OF THIS PHASE.

 <b>HLA</b> Engineering and Land Surveying, Inc.		2803 River Road Yakima, WA 98902 509.546.7000 Fax 509.965.1800 <a href="http://www.hlaenv.com">www.hlaenv.com</a>				JOB NUMBER: 17124 DATE: 2-10-20 FILE NAME: 17124.dwg DRAWING PLAN: 17124.dwg DESIGNED BY: MRP CHECKED BY: MRP DATE: _____ REVISION: _____		<b>HAYDEN HOMES</b> PLAT OF YAKIMA RIDGE - PHASE 3 YAKIMA COUNTY, WASHINGTON OVERALL SITE PLAN		SHEET <b>6</b> of or <b>39</b>
---	--	---	--	---	--	--	--	---	--	--