

**Appendix B - Photos**  
**1996 Flood**



42<sup>nd</sup> Avenue & Emma Lane Area  
Looking Southeast



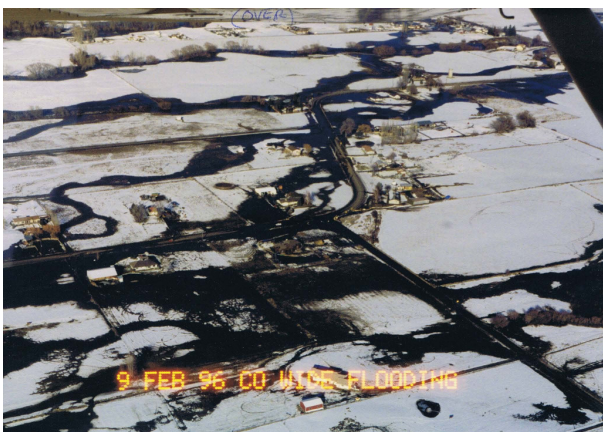
42<sup>nd</sup> Avenue & Emma Lane Area  
Looking Southeast



42<sup>nd</sup> Avenue & Emma Lane Area  
Looking Southeast



Rutherford Road & American Fruit Road  
Looking Northeast



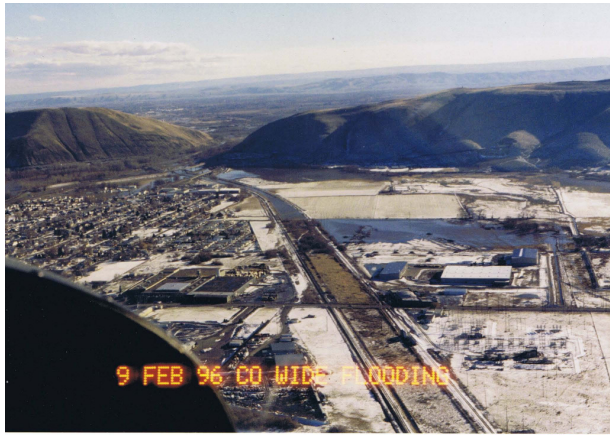
Rutherford Road & American Fruit Road  
Looking Northeast



The Community of Ahtanum  
Looking East



## 1996 Flood



City of Union Gap  
Looking South



Confluence of Ahtanum Creek, Wide Hollow  
Creek & Yakima River - Looking Northwest



Community of Ahtanum  
Looking East



80<sup>th</sup> Avenue & Wide Hollow Road  
Looking South



80<sup>th</sup> Avenue & Wide Hollow Road  
Looking North



Wide Hollow Road near 84<sup>th</sup> Avenue  
Looking Northwest



## 2003 Flood



Driveway off of Ahtanum Road  
Looking North



North Fork Ahtanum Creek  
Looking Northwest



42<sup>nd</sup> Avenue & Ahtanum Creek  
Looking North



American Fruit Road & Ahtanum Creek  
Looking West



Emma Lane – Looking South



Emma Lane– Looking North



## Irrigation Structures



YVCC Crossing  
Wide Hollow Creek & 101<sup>st</sup> Ave



Old Hatton Diversion  
Ahtanum Creek



Upper WIP Diversion  
Ahtanum Creek



John Cox Diversion  
Ahtanum Creek

## Wide Hollow Creek Mill Structure



City of Union Gap – Looking East



### North Fork Ahtanum Creek Bank Stabilization with Fascines

A **fascine** is a rough bundle of brushwood used for strengthening an earthen structure, or making a path across uneven or wet terrain. Typical uses are protecting the banks of streams from erosion, covering marshy ground and so on.



Area to be stabilized



Staking the fascines



Completed installation



**~ This page intentionally left blank ~**