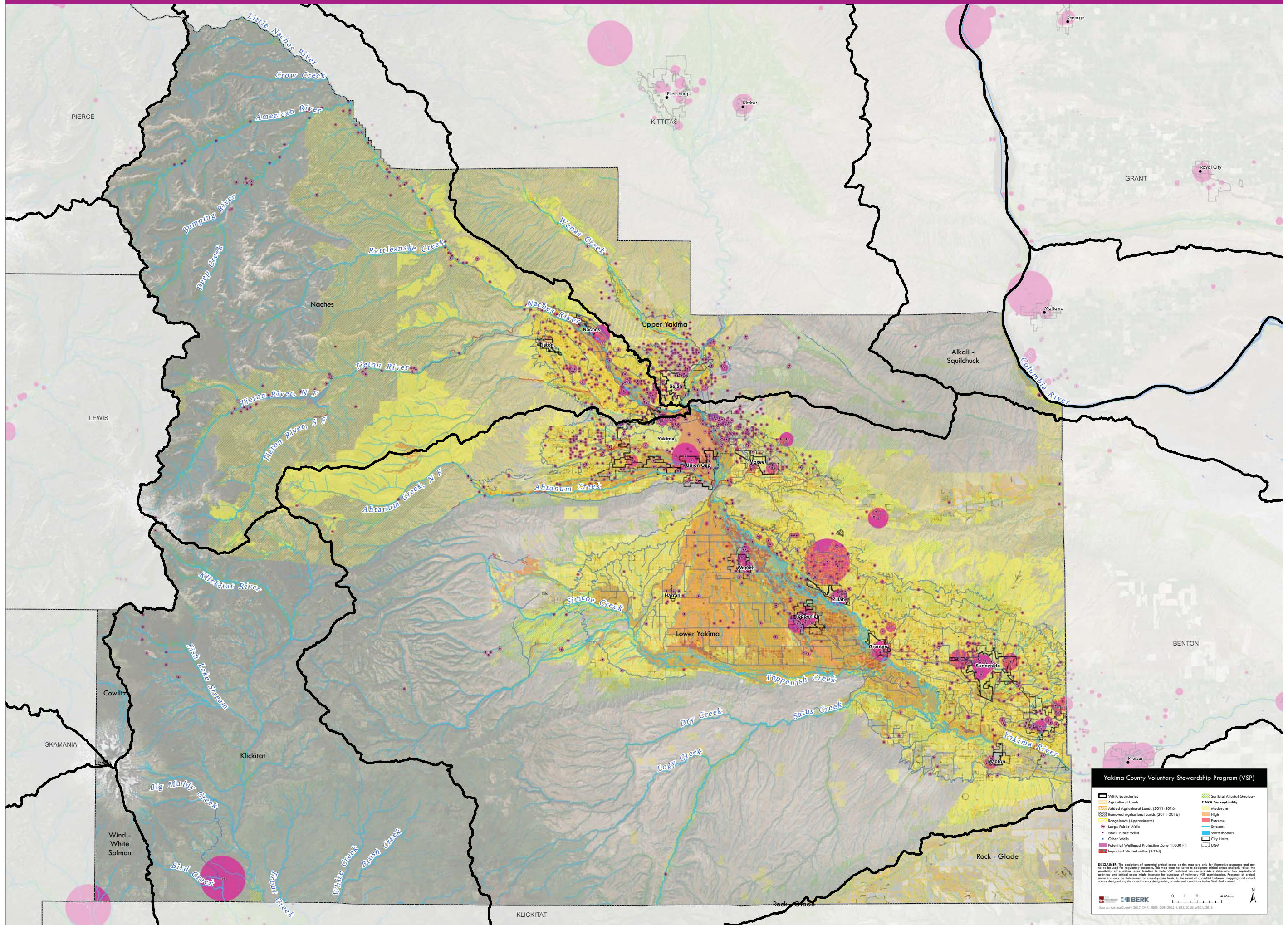


# Critical Aquifer Recharge Areas



**Yakima County Voluntary Stewardship Program (VSP)**

<ul style="list-style-type: none"> <li> WRIA Boundaries</li> <li> Agricultural Lands</li> <li> Added Agricultural Lands (2011-2014)</li> <li> Removed Agricultural Lands (2011-2014)</li> <li> Rangelands (Approximate)</li> <li> Large Public Wells</li> <li> Small Public Wells</li> <li> Other Wells</li> <li> Potential Wellhead Protection Zone (1,000 Ft)</li> <li> Impacted Waterbodies (203d)</li> </ul>	<ul style="list-style-type: none"> <li> Surficial Alluvial Geology</li> <li> CARA Susceptibility Moderate</li> <li> CARA Susceptibility High</li> <li> CARA Susceptibility Extreme</li> <li> Streams</li> <li> Waterbodies</li> <li> City Limits</li> <li> USA</li> </ul>
------------------------------------------------------------------------------------------------------------------------------------------------------------------------------------------------------------------------------------------------------------------------------------------------------------------------------------------------------------------------------------------------------------------	---------------------------------------------------------------------------------------------------------------------------------------------------------------------------------------------------------------------------------------------------------------------------

**DISCLAIMER:** The depiction of potential critical areas on this map are only for illustrative purposes and are not to be used for regulatory purposes. This map does not serve to delineate critical areas and only serves the possibility of a critical area location to help VSP technical service providers determine how agricultural activities and critical areas might interact for purposes of voluntary VSP participation. Presence of critical areas can only be determined on case-by-case basis. In the event of a conflict between mapping and actual county designations, the actual county designations, criteria and conditions in the field shall control.

Source: Yakima County, 2017; DNR, 2009; DOE, 2012; USGS, 2010; WSDA, 2016

BERK

0 1 2 4 Miles

N