

2040 Strategic Facilities Plan

Yakima County First Street Conference Room

Thursday, March 21, 2019

1:30 PM – 3:00 PM

WELCOME

2040 Advisory Team

- Citizens

- Jeff Garretson General Manager, Yakima Valley Pippins
- Vicki Baker Owner/Operator, Yakima Grocery Outlet
- Bruce Smith Editor/Publisher, Yakima Valley Business Times
- Jeff Louman Engineering Consultant
- Amanda McKinney Mortgage Broker, Caliber Home Loans

- Elected Officials

- Mike Leita Yakima County Commissioner
- Ron Anderson Yakima County Commissioner
- Norm Childress Yakima County Commissioner
- Bob Udell Yakima County Sheriff
- Joe Brusic Yakima County Prosecutor

- County Staff

- Lisa Freund Public Services Director
- Ed Campbell Department of Corrections Director
- Jessica Humphreys Court Administrator
- Brian Griff Facilities Director

How We Got Here

- 2020 Strategic Facilities Plan
 - 12-member team
 - Citizens
 - Elected Officials
 - Staff
 - January 2006 to October 2007
 - Addressed short term and long term facility needs
- 2030 Strategic Facilities Plan
 - Elected officials and staff
 - July 2015 to July 2018
 - Determine space and staffing needs through 2030
 - Develop a preliminary design for a new structure to accommodate staffing needs

2020 Plan Review

- 2020 Plan
 - Recommendations
 - Separate Yakima County administrative and law and justice functions
 - Remodel 1960's courthouse to house administrative functions
 - Build a New Courthouse to house law and justice functions
 - Relocate the Law Library to the New Courthouse
 - Relocate Department of Assigned Counsel to 1960's courthouse following renovations
 - Demolish 'A' Street Buildings
 - Demolish 1941 Jail
 - Demolish Technology Services facility (relocate department)
 - Demolish Facilities Services facility
 - Evaluate leased properties
 - Accomplishments
 - Relocated Law Library to courthouse
 - Relocated Department of Assigned Counsel to General Administration building
 - Demolished 'A' Street Buildings
 - Demolished 1941 Jail

2030 Plan Review

- 2030 Plan
 - Recommendations
 - Build a 57,200 sq. ft. three story facility to accommodate court system
 - \$36,530,597
 - Remodel 104,590 sq. ft. in the courthouse
 - \$62,867,367
 - Minimize departmental impacts and downtime
 - 5-year project
 - 5-phase project
 - Further consideration should be given to include Jail and Sheriff functions in the Law and Justice Center

A Look at Yakima County Facilities

- 1941 Courthouse
- 1962 Courthouse
- Main Jail
- Jail Annex
- General Administration Building
- Technology Services
- Facilities Services
- First Street Conference Room
- Yakima County Corrections Center (YCCC)
- Resource Center
- Juvenile Justice Center
- County Coroner and Morgue
- Leased Facilities
 - Sheriff Office
 - Grandview Court
 - NOEL Building

2040 Strategic Facilities Plan

YAKIMA COUNTY

 Facilities  Parks

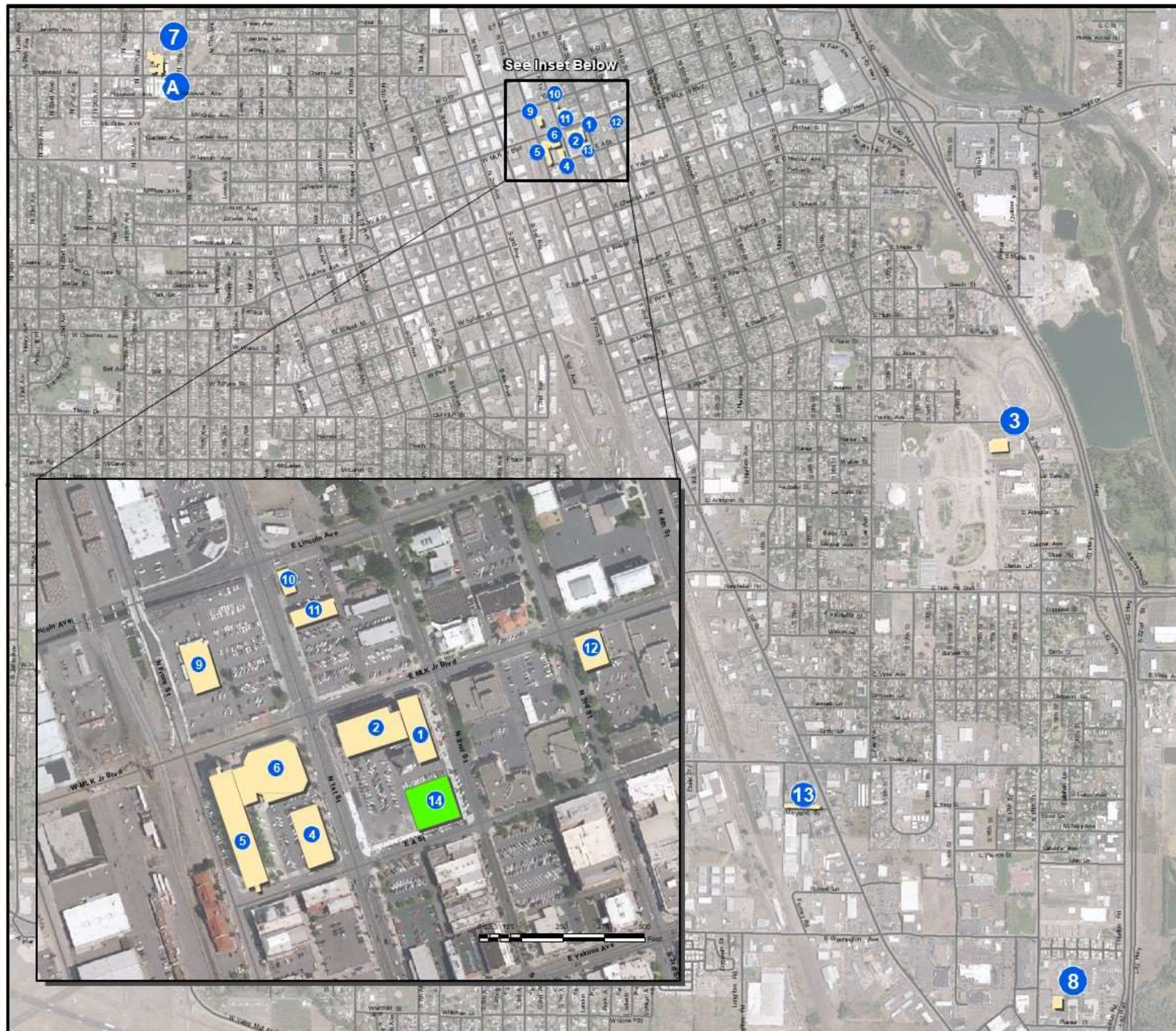
- 1 Yakima County Courthouse 1941 Section, 128 N. 2nd Street
- 2 Yakima County Courthouse 1962 Section, 128 N. 2nd Street
- 3 Yakima County Corrections Center, 1500 Pacific Avenue
- 4 General Administration Building, 104 N. 1st Street
- 5 Main Jail, 111 N. Front Street
- 6 Jail Annex, 111 N. Front Street
- 7 Juvenile Justice Center, 1728 Jerome Avenue
- 7A County Coroner and Morgue, 1711 Englewood Avenue
- 8 Resource Center, 2403 S. 18th Street, Union Gap
- 9 Facilities Services Building, 18 E. Lincoln Avenue
- 10 First Street Conference Center, 223 N. 1st Street
- 11 Technology Services, 217 N. 1st Street
- 12 NOEL Building, 117 N. 3rd Street
- 13 Sheriff's Office, 1822 S. 1st Street
- 14 Performance Park, N. 2nd Street & S Sgt Pendleton Way

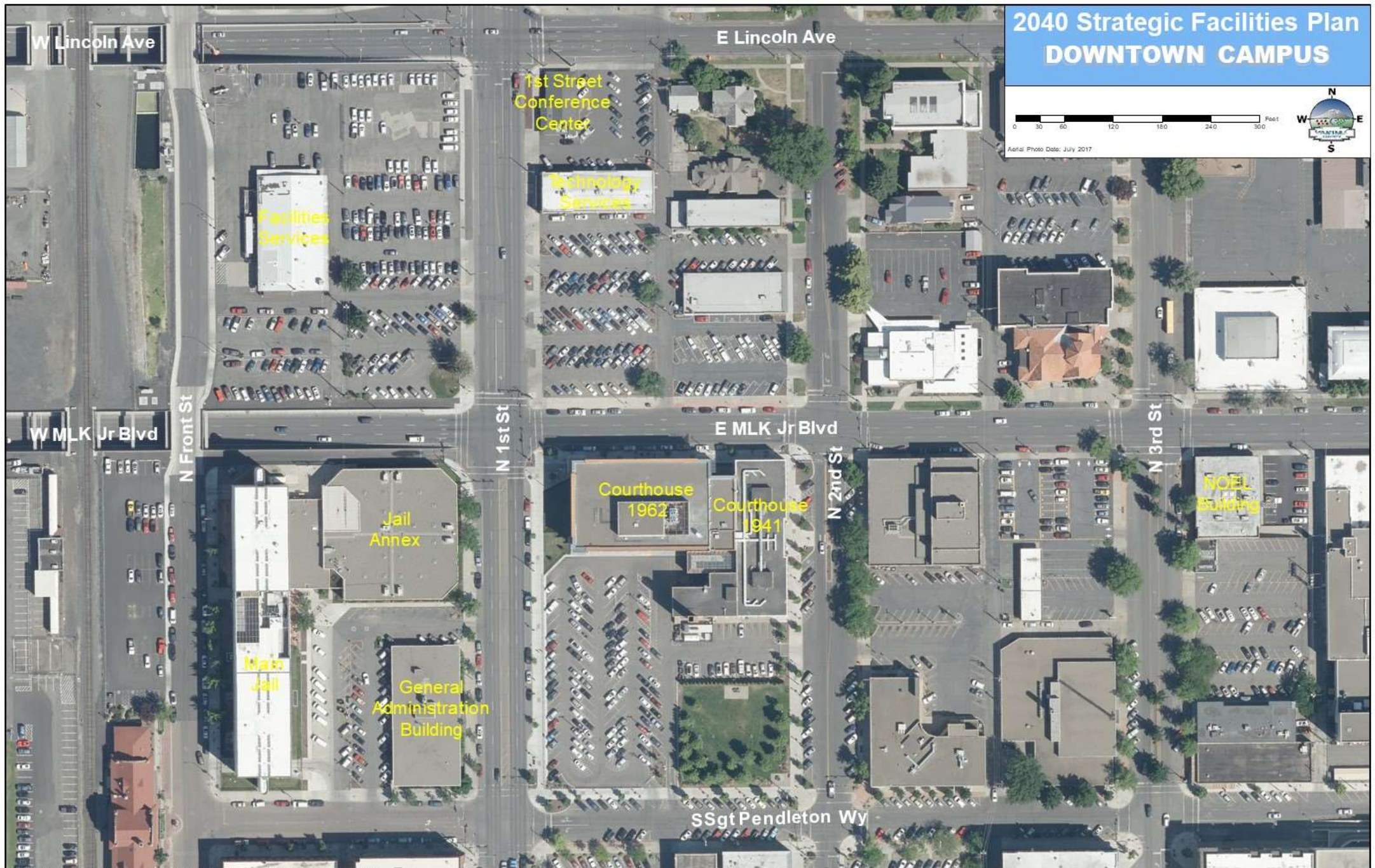
Aerial Photo Date: July 2017

0 0.25 0.5 1 Miles

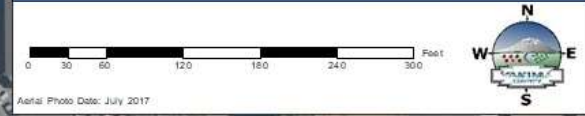


Copyright (C) Yakima County
This map was derived from several databases. The County cannot accept responsibility for any errors. Therefore, there are no warranties for this product.



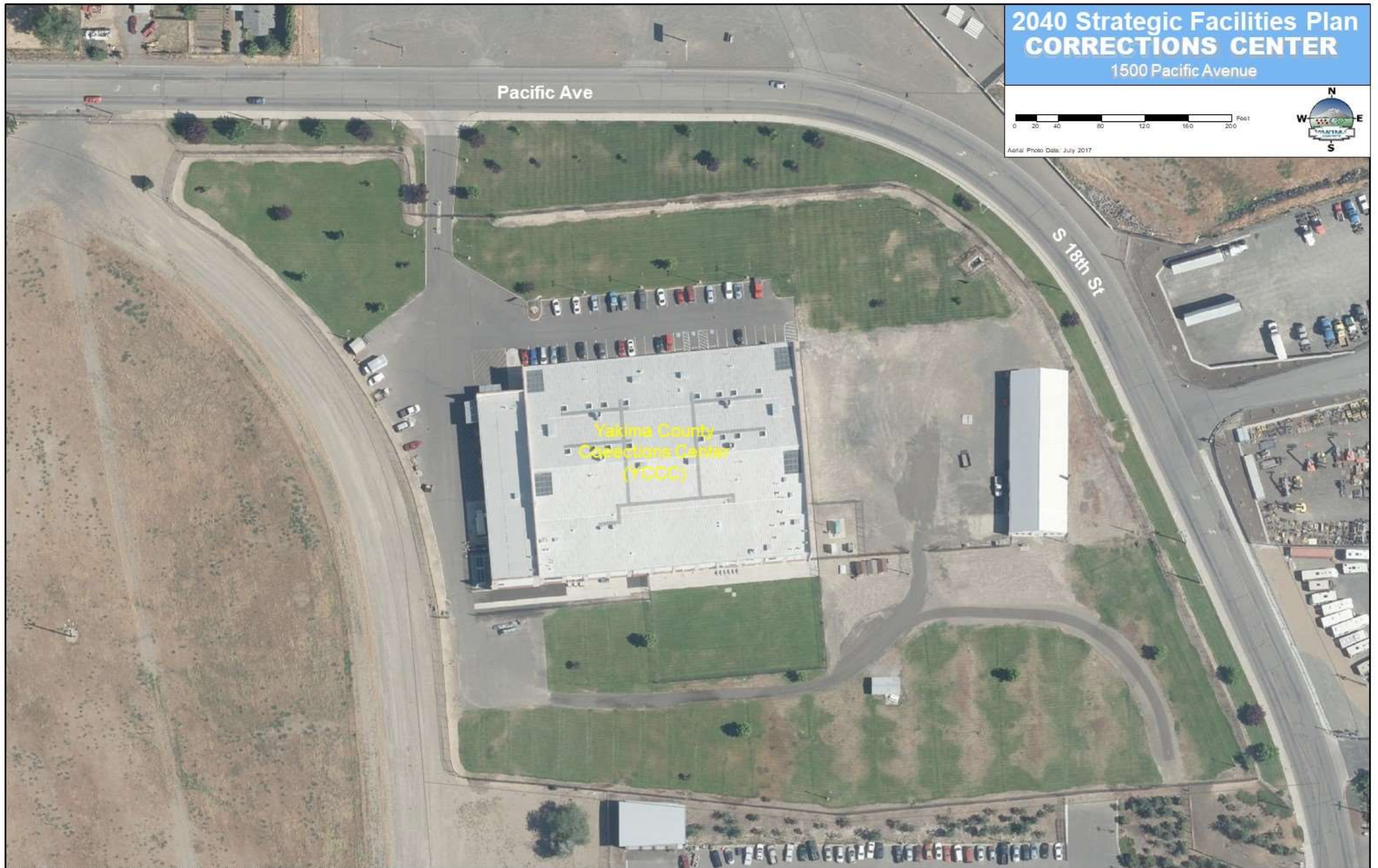
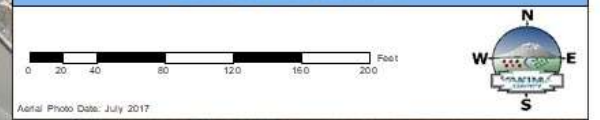


2040 Strategic Facilities Plan DOWNTOWN CAMPUS

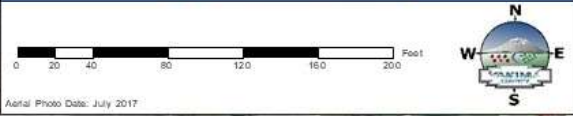


Aerial Photo Date: July 2017

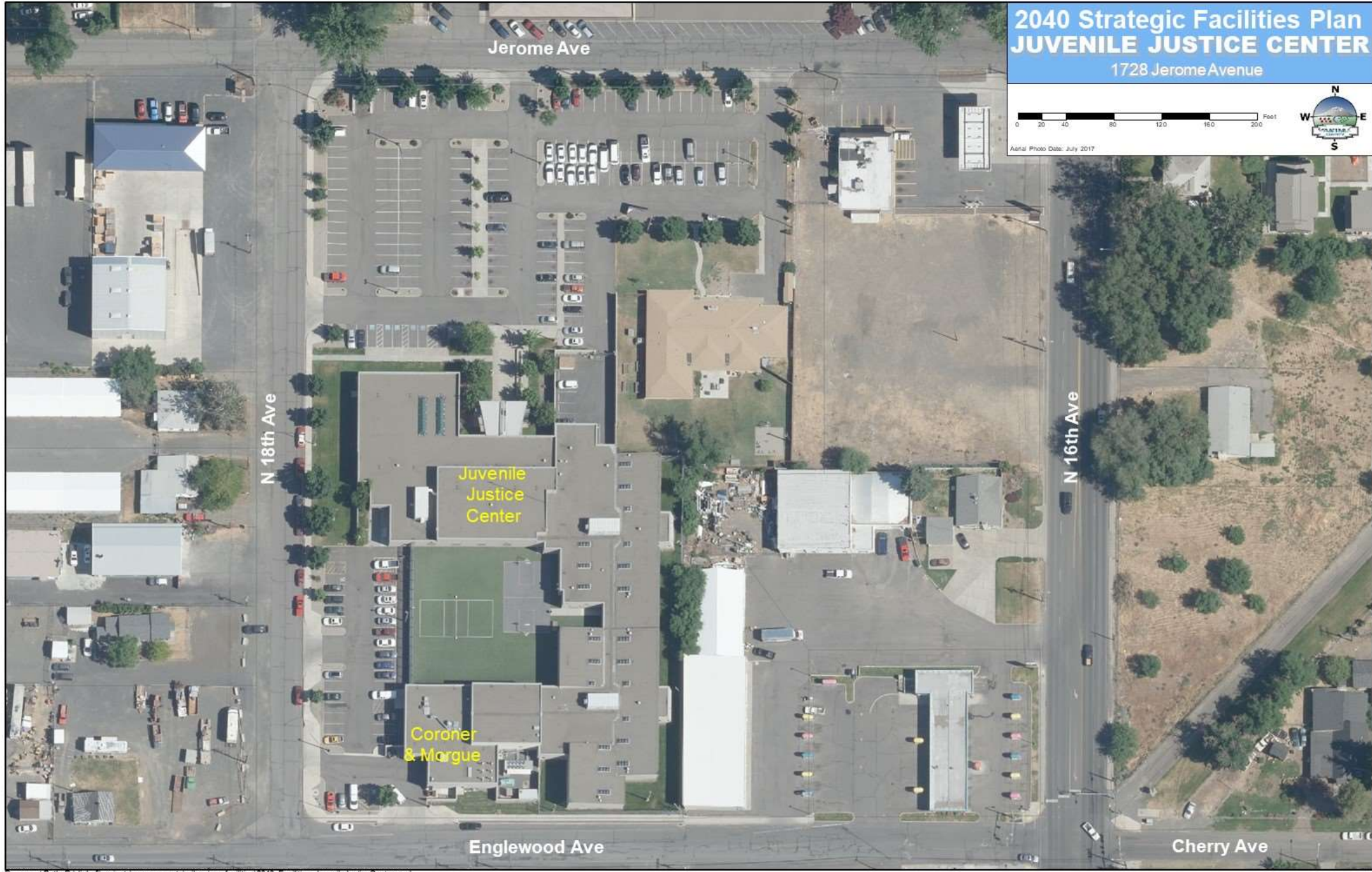
2040 Strategic Facilities Plan CORRECTIONS CENTER 1500 Pacific Avenue



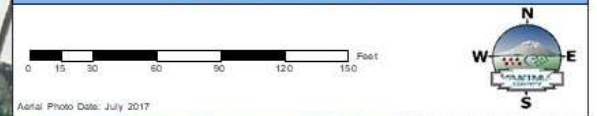
2040 Strategic Facilities Plan
JUVENILE JUSTICE CENTER
1728 Jerome Avenue



Aerial Photo Date: July 2017



2040 Strategic Facilities Plan RESOURCE CENTER 2403 S. 18th Street





1941 Courthouse
48,000 square feet



1962 Courthouse
96,000 square feet



Main Jail
Built in 1984
121,000 square feet



Jail Annex
Built in 1991
37,750 square feet



General Administration Building
Built in 1971
25,000 square feet



Technology Services
Built in 1940's
6,500 square feet



First Street Conference Room
Built in 1960's
2,400 square feet



Facilities Services
Built in 1958
11,000 square feet



Juvenile Justice Center
Built in 1994
48,000 square feet



Yakima County Corrections Center (YCCC)
Built in 2005
90,000 square feet



Resource Center
Built in 1960's
28,000 square feet



Sheriff's Office
LEASED FACILITY



**YAKIMA COUNTY
DISTRICT COURT**

1313

Grandview Court
LEASED FACILITY



NOEL Building
LEASED FACILITY
Occupied by Prosecuting Attorney's Office

2040 Strategic Facilities Plan

Why Are We Here

- Establish priorities for the 2040 Strategic Facilities Plan
- Address short term and long term facility needs
- This may include
 - Determining space needs
 - Leased facilities
 - Evaluating existing facilities
 - Identifying financial strategies
 - Developing a 2040 Facilities Strategic Plan

Resources Available to This Group

- Subject matter experts who can speak to their operation (*e.g., County Prosecutor, Department of Corrections, Court Administrator, Public Services, Sheriff*)
- Physical tours of County facilities
- Tours of other municipalities
- Access to previous studies
- Access to facility revenue and expense history
- Information on current square footage and future needs
- County staffing trends
- MORE!!

Open Discussion

Q&A