

EMERGENCY SUPPORT FUNCTION  
20: DEFENSE SUPPORT TO CIVIL AUTHORITIES

**Coordinating:**

Yakima Valley Emergency Management

**Primary(s):**

Yakima Valley Emergency Management

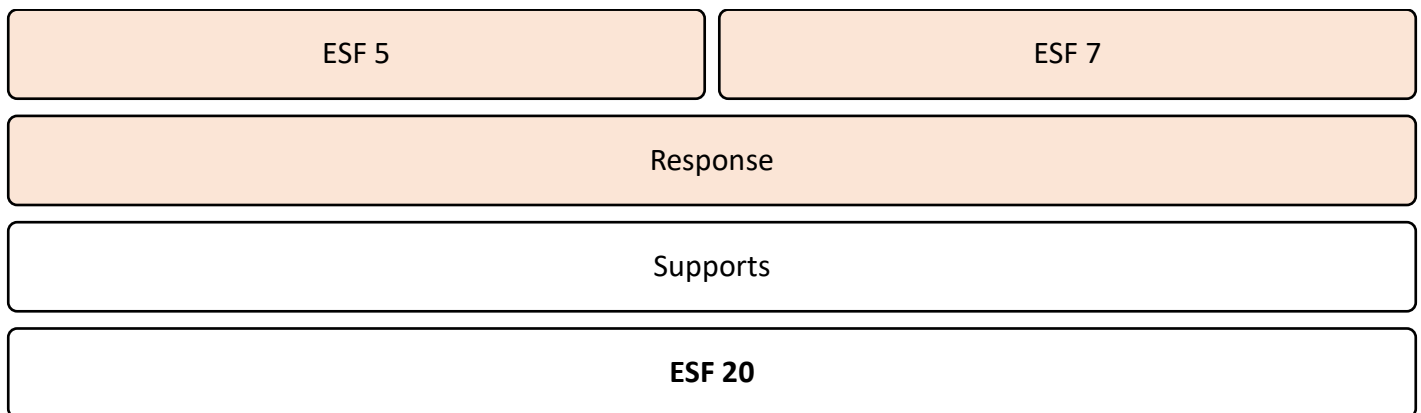
**Supporting:**

Board of County Commissioners

Mayors/Chief Elected Officials

**Other Emergency Support Functions (ESFs) or Recovery Functions exist that coordinate with or support this ESF:**

- On the ESF Core Capabilities Matrix, find Primary core capabilities (P) within this ESF and then move vertically and add all Supporting (S) core capabilities and equate them to ESFs.
- Next find all Supporting (S) ESFs in the column and then move horizontally along each row of a Supporting (S) core capability to find all Primary (P) ESFs.



**1. Purpose**

- 1.1. Emergency Support Function (ESF) #20 – Defense Support to Civil Authorities establishes requesting procedures and effective coordination for use of military assistance and assets to civil authority during an emergency or disaster.

Primary Core Capabilities	
Response Mission Areas	
Operational Coordination	Establish and maintain a unified and coordinated operational structure and process that appropriately integrates all critical stakeholders and supports the execution of Core Capabilities.

Support Core Capabilities	
Response Mission Areas	
Logistics & Supply Chain Management	Deliver essential commodities, equipment, and services in support of impacted communities and survivors, to include emergency power and fuel support, as well as the coordination of access to community

EMERGENCY SUPPORT FUNCTION  
20: DEFENSE SUPPORT TO CIVIL AUTHORITIES

Support Core Capabilities	
	staples. Synchronize logistics capabilities and enable the restoration of impacted supply chains.

**2. Authorities/Policies**

- 2.1. The Washington State Governor, through [RCW 38.08.040](#), may direct the Military Adjutant General (TAG) to use full-time, federally funded members of the Washington State National Guard (WNG) to take immediate actions to stabilize the situation prior to mobilizing the WNG in a State Active Duty (SAD) status. As soon as the emergency is stabilized, the WNG will begin to withdraw support unless the Governor directs the TAG to order the WNG into SAD.
- 2.2. Military forces, either state or federal under Title 10 or 32, will remain under and follow their military chain of command.
- 2.3. Any requests for military assistance must be processed through the Washington State Military Department, Emergency Management Division (WEMD)/ Washington State Emergency Operations Center (SEOC).

**3. Situation Overview**

- 3.1. ESF #20 should be implemented where an emergency or disaster could occur for which military assistance may be the best or only solution.
- 3.2. The county and state have issued Disaster Declarations.
- 3.3. Any request for military assistance will be processed through Yakima County Emergency Operations Center (YCEOC) to WEMD SEOC.
- 3.4. A military liaison may be assigned to the YCEOC or to an area wide (overlapping county jurisdiction) location where a task force has been established to coordinate the use of any military assets assigned to the event.

**4. Concept of Operations**

- 4.1. The Revised Code of Washington (RCW) 38.08.040 provides that, upon the occurrence of certain events, the Governor has the power to order the organized militia of Washington or any part thereof into active service for Washington State to execute the laws and perform such services as the Governor shall deem proper. This power resides with the Governor or acting Governor alone and may not be delegated to another person or agency.
  - 4.1.1. The Washington State Military Department is made up of two military components: the Army National Guard and the Air National Guard. There are two civilian components: Washington State Emergency Management Division (WEMD), and the Youth Academy. The Washington National Guard (WNG) unit capabilities include engineering, communications, transportation, and aviation.

EMERGENCY SUPPORT FUNCTION  
20: DEFENSE SUPPORT TO CIVIL AUTHORITIES

- 4.1.2. Coordination of military support to civil authorities will be performed by the Washington State Military Department through the State Emergency Operations Center (SEOC).
- 4.1.3. The various elements of the State of Washington Military Department will follow their internal Standard Operating Procedures (SOPs) when in support of an emergency or disaster.

**4.2. Whole Community Involvement**

- 4.2.1. A successful Whole Community response and recovery process assesses local assets and capabilities, bolsters identified weaknesses, and supports locally-driven solutions. This includes, but is not limited to, inclusive disaster planning, supporting local response and recovery organizations and processes, developing partnerships with supportive groups and agencies, and ensuring a place at the table for government, residents, NGOs, businesses, churches, advocacy organizations, and other stakeholders including the WNG.
- 4.2.2. The Whole Community includes populations with individuals with disabilities and Access and Functional Needs (AFN). Any agency or organization that receives federal funding is required to have a plan or policy for addressing the needs of individuals with Limited English Proficiency (LEP), pursuant to Title VI, the Civil Rights Act. The Washington State Emergency Management Division and this ESF expects all agencies and organizations to comply with federal law. For more information on how each agency or organization complies with federal law, please contact the individual agency or organization.
- 4.2.3. ESF #20 recognizes that inclusion and accessibility is about more than language translation. Inclusion and accessibility mean a concerted effort to engage populations with limited English proficiency (LEP), disabilities, or other conditions that limit access to recovery services, and to promote effective resource accessibility – that is, that no impacted individuals face a unique burden in securing resources for which they qualify, and that are available to others.

Mission Area	Critical Task I.D.	Critical Tasks
<b>Operational Coordination</b>		
Response	<b>1</b>	Mobilize all critical resources and establish command, control, and coordination structures within the affected community, in other coordinating bodies in surrounding communities and neighboring counties and maintain as needed throughout the duration of an incident.
	<b>2</b>	Enhance and maintain command, control, and coordination structures consistent with the National Incident Management System (NIMS) to meet basic human needs, stabilize the incident, and transition to recovery.

EMERGENCY SUPPORT FUNCTION  
20: DEFENSE SUPPORT TO CIVIL AUTHORITIES

Mission Area	Critical Task I.D.	Critical Tasks
<b>Logistics &amp; Supply Chain Management</b>		
Response	<b>1</b>	Mobilize and deliver governmental, nongovernmental, and private sector resources to save lives, sustain lives, meet basic human needs, stabilize the incident, and transition to recovery, to include moving and delivering resources and services to meet the needs of disaster survivors.
	<b>2</b>	Enhance public and private resource and services support for an affected area.

**5. Organization**

- 5.1. YCEOC and the Emergency Services Executive Board (ESEB) will ensure that a liaison is made available to coordinate with any Washington National Guard (WNG) assets responding to support Yakima County.
- 5.2. ESF #20 is located within the YCEOC Operations Section and may be led by an assigned military liaison or YVEM. The following is a sample information sharing structure for ESF #20.

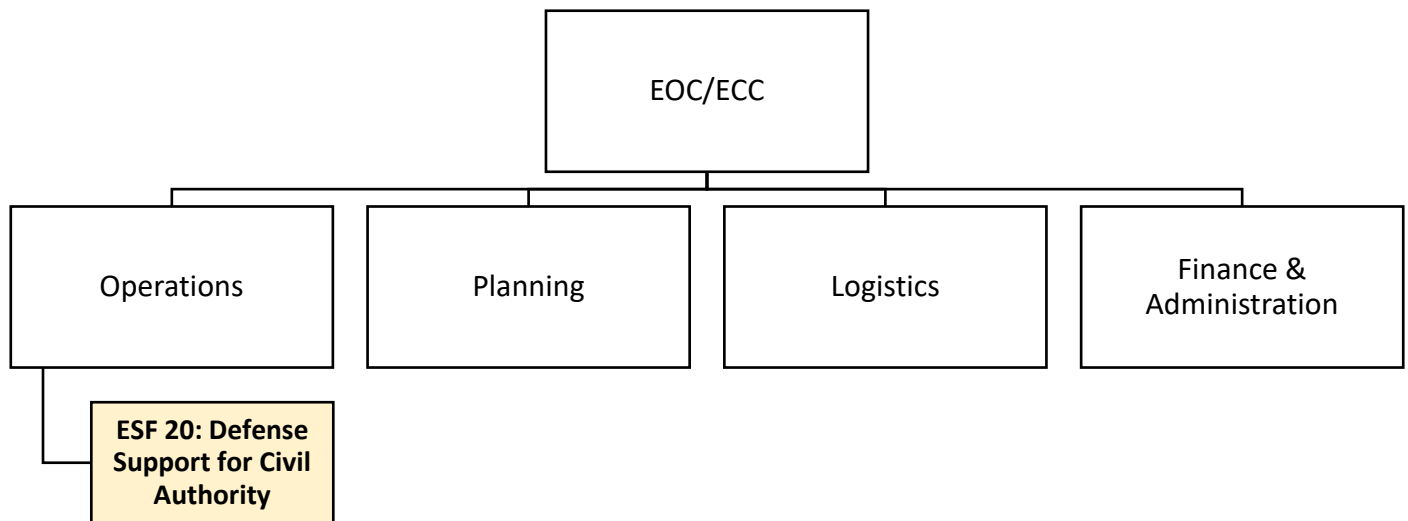


Figure 1: YCEOC, ESF #20, Organizational Chart Example

**6. Direction, Control, & Coordination**

- 6.1. The Chief Elected Official (CEO) of the local government where the emergency occurs will exercise direction and control activities within that jurisdiction. CEO will coordinate with the YVEM who is responsible for implementing the CEMP. Each jurisdiction shall establish Standard Operating Guidelines (SOGs) to control and direct response actions. In cases where local resources to contend with an emergency do not exist or have been depleted, the affected CEO, in coordination with Yakima Valley Emergency Management (YVEM), should request county aid first and then followed by state aid through the county and/or state EOCs, respectively. Resources made available to the

EMERGENCY SUPPORT FUNCTION  
20: DEFENSE SUPPORT TO CIVIL AUTHORITIES

local government will be under the operational control of the CEO or designee through the Incident Commander. When the resource mission is completed, the local ECC and YCEOC/YVEM will be notified, and the resource returned for other assignment.

- 6.2. The YCEOC is the central point for coordinating emergency response and recovery actions. The purpose of this central point is to ensure harmonious response when the emergency involves more than one political entity and several response agencies. Coordination of military services will be through the YCEOC and the military liaison to provide for the most efficient management of resources.
- 6.3. Department/agency heads and other officials legally administering their office may perform their emergency function(s) on their own initiative if, in their judgment, the safety or welfare of the population is threatened. The YCEOC and/or YVEM should be notified as soon as possible.

**7. Information Collection, Analysis, & Dissemination**

- 7.1. Information will be coordinated from the YCEOC or other designated point, as appropriate to the incident.
- 7.2. Information will be used for planning purposes and to inform all involved agencies on the situation and actions.
- 7.3. The local Incident Commander (IC) or designee is responsible for providing situation reports and periodic updates to keep the YCEOC informed.
- 7.4. Jurisdiction, agency, and volunteer organization representatives within the YCEOC will assist with meeting the information collection, analysis, and dissemination needs of the Policy Group, YVEM and YCEOC staff. This will include maintaining contact with their field representatives for reports and updates. Additionally, the YCEOC may need to request information from other local jurisdictions or agencies, as well as other governmental entities, including state and federal.
- 7.5. The Operations Section within the YCEOC is responsible for the management of the information received within the YCEOC regarding ESF #20. This section will be responsible for collection, analysis, and dissemination of the intelligence/information flow example as depicted in Figure 1: YCEOC Information Collection, Analysis, and Dissemination process.
- 7.6. Individual jurisdiction and/or agency representatives within the YCEOC will share information they receive from field representatives by posting on boards, making announcements, routing messages to other EOC staff, preparing periodic situation reports, or other means as necessary.
- 7.7. Incoming information/requests should be verified for authenticity and confirm requests to be filled are not or will not be duplicated.
- 7.8. Some incoming information/requests may require a vetting process through the Policy Group and/or the YCEOC Manager due to legal, policy, ethical, or other concerns.
- 7.9. YCEOC, YVEM, or designee, shall provide situation reports to local support agencies/jurisdiction ECCs and the Washington State Emergency Management Division (WAEMD) – State Emergency Operations Center (SEOC) as appropriate.

**EMERGENCY SUPPORT FUNCTION  
20: DEFENSE SUPPORT TO CIVIL AUTHORITIES**

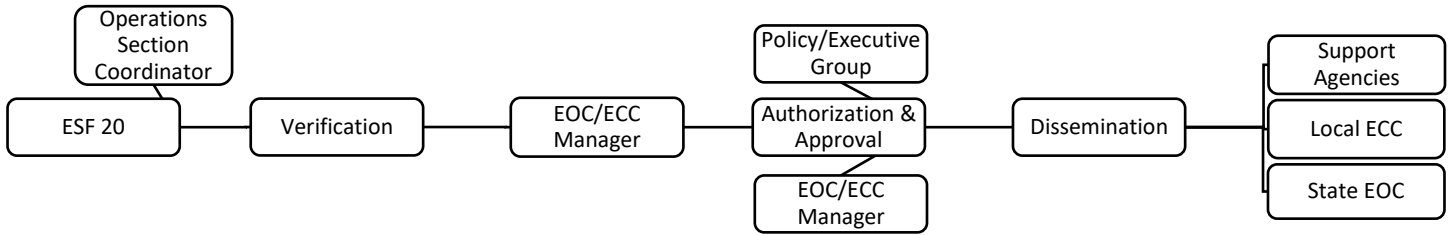


Figure 2: YCEOC Information Collection, Analysis, and Dissemination Flow

**8. Responsibilities**

Response Mission Area			
Core Capability	Critical Task I.D.	Activity/Action	Organization(s) Name
Operational Coordination	1	Coordinate public information through ESF #15 (Public Affairs).	Primary Organization - YVEM
Operational Coordination	1	A Disaster Declaration must be issued before requesting any military assets.	Board of County Commissioners Mayors/Chief Elected Officials
Operational Coordination	1	Coordinate and/or support the collection of information from jurisdiction/field representatives and share information with the appropriate EOC staff.	All Organizations/Agencies
Operational Coordination	1	Maintain close coordination with local ECCs/EOCs, the SEOC and military liaison.	Primary Organization - YVEM
Operational Coordination	2	The YCEOC is organized under the basic concepts of NIMS and ICS.	All Organizations/Agencies
Operational Coordination	2	The county EOC must assign a specific mission to any military unit assigned to the county and designate who, in the field, the WNG members are to report to for instructions.	Primary Organization - YVEM
Logistics & Supply Chain Management	1	Analyze and verify each request before procuring redundant assets to incident	Primary Organization - YVEM
Logistics & Supply Chain Management	1, 2	The county EOC must assign a specific mission to any military unit assigned to the county and designate who, in the field, they are to report to for instructions.	Primary Organization - YVEM

**9. Resource Requirements**

Resources	Providers
-----------	-----------

EMERGENCY SUPPORT FUNCTION  
20: DEFENSE SUPPORT TO CIVIL AUTHORITIES

Desktop or Laptop	Yakima County EOC (may bring home agency laptop)
WebEOC login (Guest account)	Primary Agency/Organization
Contact list (phone & email) of organizations (master list)	Yakima County EOC or Home Agency/Organization
Internet and folder drive access	Yakima County EOC
Appropriate Home Agency/Org SOPs (hard & soft copies)	Primary Agency/Organization
Desk Phone	Yakima County EOC
Tiered communication structure with Incident Management Teams (IMT)	Yakima County EOC
Two-way Radio	Yakima County EOC or Home Organization
<b>Training</b>	<b>Providers</b>
E/G0191 (Emergency Operations Center/Incident Command System Interface)	Various locations (in-residence)
IS 100, 200, 700, 800	FEMA Emergency Management Institute (online)
ICS 300, 400	Various locations (in-residence)

**10. References and Supporting Plans**

- 10.1. ESF 5 – Information & Planning, Yakima County CEMP
- 10.2. ESF 7 – Resource Support/Logistics, Yakima County CEMP
- 10.3. Revised Code of Washington (RCW) 38.08.040 – Governor may order out organized militia.
- 10.4. Washington State CEMP, Emergency Support Function #20 – Defense Support to Civil Authorities

**11. Terms and Definitions**

- 11.1. Emergency Services Executive Board (ESEB) – The governing board for Yakima County Emergency Management.
- 11.2. The Adjutant General (TAG), Washington – Director/General of the Washington Military Department. The current
- 11.3. Washington National Guard (WNG) – Washington State militia consisting of the Army National Guard and the Air National Guard.