

EMERGENCY SUPPORT FUNCTION
7: LOGISTICS MANAGEMENT & RESOURCE SUPPORT

Coordinating:

Yakima Valley Emergency Management

Primary(s):

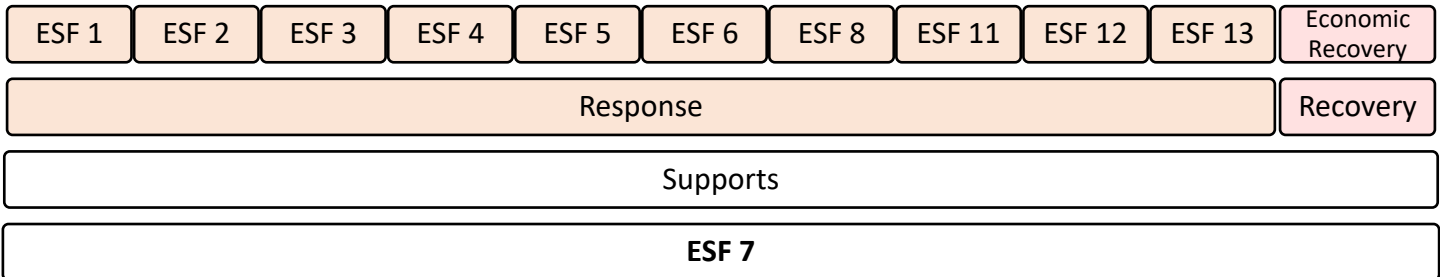
Yakima Valley Emergency Management

Supporting:

- American Red Cross – Central & Southeastern Washington
- Municipal Governments
- Municipal Public Works
- Yakima County Financial Services
- Yakima County Human Resources
- Yakima City/County Purchasing Department
- Yakima County Public Services
- Yakima Health District

Other Emergency Support Functions (ESFs) or Recovery Functions exist that coordinate with or support this ESF:

- On the ESF Core Capabilities Matrix, find Primary core capabilities (P) within this ESF and then move vertically and add all Supporting (S) core capabilities and equate them to ESFs.
- Next find all Supporting (S) ESFs in the column and then move horizontally along each row of a Supporting (S) core capability to find all Primary (P) ESFs.



1. Purpose

- 1.1. Emergency Support Function (ESF) #7 – Logistics Management & Resource Support provides coordinated logistical and resource support to an emergency response or recovery effort or other disaster assistance initiative.

Primary Core Capabilities	
Response Mission Area	
Logistics & Supply Chain Management	Deliver essential commodities, equipment, and services in support of impacted communities and survivors, to include emergency power and fuel support, as well as the coordination of access to community staples. Synchronize logistics capabilities and enable the restoration of impacted supply chains.

EMERGENCY SUPPORT FUNCTION
7: LOGISTICS MANAGEMENT & RESOURCE SUPPORT

Primary Core Capabilities	
Recovery Mission Areas	
Economic Recovery	Return economic and business activities (including food and agriculture) to a healthy state and develop new business and employment opportunities that result in an economically viable community.

Support Core Capabilities	
Response Mission Area	
Operational Coordination	Establish and maintain a unified and coordinated operational structure and process that appropriately integrates all critical stakeholders and supports the execution of Core Capabilities.
Infrastructure Systems	Stabilize critical infrastructure functions, minimize health and safety threats, and efficiently restore and revitalize systems and services to support a viable, resilient community.
Critical Transportation	Provide transportation (including infrastructure access and accessible transportation services) for response priority objectives, including the evacuation of people and animals and the delivery of vital response personnel, equipment, and services into the affected areas.
Mass Care Services	Provide life-sustaining and human services to the affected population, to include hydration, feeding, sheltering, temporary housing, evacuee support, reunification, and distribution of emergency supplies.
Operational Communications	Ensure the capacity for timely communications in support of security, situational awareness, and operations, by any and all means available, among and between affected communities in the impact area and all response forces.

2. Policies

- 2.1. Priority is given to LIP: Life safety, Incident stabilization or Property protection (preservation).
- 2.2. Yakima Valley Emergency Management (YVEM) and the Yakima County EOC functions are based on the Constitution and Revised Code of Washington (RCW) governing emergency management, which includes references regarding resource procurement, etc.
 - 2.2.1. Washington State Constitution. Article 8, Section 7, “No county, city, town or other municipal corporation shall hereafter give any money, or property, or loan its money, or credit to or in aid of any individual, association, company or corporation,”
 - 2.2.2. [Washington State RCW – 38.52.070](#) - Emergency Contracts and Obligations
 - 2.2.3. [Washington State RCW – 38.52.110](#) - Use of existing resources; command the service and equipment of the citizens

EMERGENCY SUPPORT FUNCTION
7: LOGISTICS MANAGEMENT & RESOURCE SUPPORT

- 2.3. Chief Elected Officials (CEOs) of Yakima County government jurisdictions may invoke temporary controls on local resources and establish priorities when a local State of Emergency is proclaimed. These may include, but not be limited to fuel, food, shelter and other resources necessary for human needs. Any controls established will be in coordination with other local jurisdictions within Yakima County.
- 2.4. It is the policy of Yakima County government jurisdictions that departments utilize their personnel to the maximum extent possible, including use of personnel not normally assigned emergency responsibilities. Government employees required to work either overtime or "out of class" in responding to a disaster shall be compensated in accordance with existing rules and bargaining agreements and the requirements of the Fair Labor Standards Act (FLSA).
- 2.5. YVEM will, as a priority, encourage individuals and organizations to make contributions of money (rather than physical goods) to local charity organizations.

3. Situation Overview

- 3.1. Weather conditions and the extent of damage to the public infrastructure of the affected area, in addition to the condition of the transportation network in the area, will influence the strategy or ability to provide support.
- 3.2. Each responding organization has established a system for managing agency resources.
- 3.3. All county and city organizations, services, and facilities can be utilized during a disaster. The Incident Command System (ICS) will be utilized from the National Incident Management System (NIMS).
- 3.4. Supplies and equipment will be provided from existing Yakima County inventories whenever possible. Resource needs beyond the capacity of jurisdictions should be coordinated through the Yakima County Emergency Operations Center (YCEOC).
- 3.5. Supplies and items of equipment obtained from commercial providers will not be stockpiled; however, the scope of procurement operations will be consistent with the severity of the event.
- 3.6. An extreme situation could develop that might require the elected legislative authorities of the county to invoke local resource restrictions or economic controls to assure an acceptable level of recovery and response.
- 3.7. Procurement will be conducted in accordance with State and County laws and regulations, including provisions for emergency procurement and no-bid contracting.
- 3.8. The government's initial response will focus on lifesaving and injury reduction activities followed by protection of critical infrastructure and public property. The protection of private property will be the responsibility of the landowner or tenant.

EMERGENCY SUPPORT FUNCTION
7: LOGISTICS MANAGEMENT & RESOURCE SUPPORT

- 3.9. RCW 38.52 and WAC 118.04 provide for the classification, registration, and utilization of emergency services workers and describe emergency services worker compensation and immunity responsibilities.

4. Concept of Operations

- 4.1. ESF #7 manages and coordinates resource support activities. This function is accomplished by mobilizing public and private resources in support of local emergency operations.
- 4.2. ESF #7 will be implemented upon notification of a potential or actual major emergency or disaster. Implementing ESF #7 will be the mechanism for providing support activity to other ESFs.
- 4.3. YVEM or the YCEOC will manage resource coordination activities. Incoming resources will usually be processed through a staging area operation, which will be determined by the situation.
- 4.4. During initial emergency operations, each entity will be responsible for managing its own resources. Local resources will be utilized before requesting assistance from the region and state.
- 4.5. Multi-agency response will use the Incident Command System (ICS) within the National Incident Management System (NIMS).
- 4.6. The legislative authority of the political subdivisions is empowered to establish controls on resources and resource allocation priorities during a State of Emergency.
- 4.7. Voluntary controls are the preferred method of resource management, although mandatory controls may be required, when feasible, as a temporary measure. The public will be encouraged to voluntarily cooperate with emergency measures through the public information program.
- 4.8. The Yakima County Board of Commissioners and the respective Mayors/City Councils have the responsibility and authority to allocate resources and invoke economic and other controls, if the situation warrants.
- 4.9. When appropriate, private agricultural, industrial, commercial, financial, or other services may assist local government in an advisory capacity with emergency resource distribution and mobilization policies or control programs.
- 4.10. Local community service organizations, with the American Red Cross Serving Central and Southeastern Washington (ARC) being the lead agency will manage donated goods and services. The YVEM and ARC will determine receiving points for donated goods.
- 4.11. **Whole Community Involvement**
- 4.11.1. Yakima Valley Emergency Management (YVEM) strives to engage whole community partners (i.e. government, non-profit, private sector, and community groups) to understand each other's functions, capabilities and available resources that may be utilized during a disaster. YVEM has been actively identifying ways to better communicate and plan with the Access

EMERGENCY SUPPORT FUNCTION
7: LOGISTICS MANAGEMENT & RESOURCE SUPPORT

and Function Needs (AFN), and homeless populations within the county through the Homeless Network of Yakima County consisting of approximately 60 organizations.

- 4.11.2. Jurisdictional fire departments reach out to their whole communities in various forums, including fire code inspection programs, to educate the public regarding fire safety, injury prevention and other safety issues. Presentations are made throughout the community on a variety of safety issues including: home and workplace fire safety, proper use of fire extinguishers, bicycle safety, wildland interface fire prevention (Firewire), and juvenile fire setting. The Yakima Valley Fire Adaptive Communities Coalition increases and sustains wildfire resiliency by working together, empowering people, providing education, supporting partnerships in preparing for, responding to, and recovering from wildland fire for and with the people in Yakima County.
- 4.11.3. Jurisdictional law enforcement departments reach out to their entire communities through community policing, including home, personal property, and personal safety tips/checklists. The community policing philosophy focuses on citizen involvement as an integral part of the solution to crime problems. Police departments across the county are adopting this philosophy in one form or another and beginning to work hand in hand with individuals, National Night Out, block watch organizations, crime stoppers, and other community groups to attack the root cause of crime.
- 4.11.4. The Whole Community includes populations with individuals with disabilities and Access and Functional Needs (AFN). Any agency or organization that receives federal funding is required to have a plan or policy for addressing the needs of individuals with Limited English Proficiency (LEP), pursuant to Title VI, the Civil Rights Act. The Washington State Emergency Management Division and this ESF expects all agencies and organizations to comply with federal law. For more information on how each agency or organization complies with federal law, please contact the individual agency or organization.

Mission Area	Critical Task I.D.	Critical Tasks
Logistics & Supply Chain Management		
Response	1	Mobilize and deliver governmental, nongovernmental, and private sector resources to save lives, sustain lives, meet basic human needs, stabilize the incident, and transition to recovery, to include moving and delivering resources and services to meet the needs of disaster survivors.
	2	Enhance public and private resource and services support for an affected area.

Mission Area	Critical Task I.D.	Critical Tasks
Operational Coordination		
Response	1	Mobilize all critical resources and establish command, control, and coordination structures within the affected community, in other coordinating bodies in

EMERGENCY SUPPORT FUNCTION
7: LOGISTICS MANAGEMENT & RESOURCE SUPPORT

Mission Area	Critical Task I.D.	Critical Tasks
Operational Coordination		
		surrounding communities and neighboring counties and maintain as needed throughout the duration of an incident.
	2	Enhance and maintain command, control, and coordination structures consistent with the National Incident Management System (NIMS) to meet basic human needs, stabilize the incident, and transition to recovery.

Mission Area	Critical Task I.D.	Critical Tasks
Infrastructure Systems		
Response	1	Decrease and stabilize immediate infrastructure threats to the affected population, to include survivors in the heavily damaged zone, nearby communities that may be affected by cascading effects, and mass care support facilities and evacuation processing centers with a focus on life sustainment and congregate care services.
	2	Re-establish critical infrastructure within the affected areas to support ongoing emergency response operations, life sustainment, community functionality, and a transition to recovery.
	3	Provide for the clearance, removal, and disposal of debris.
	4	Formalize partnerships with governmental and private sector cyber incident or emergency response teams to accept, triage, and collaboratively respond to cascading impacts in an efficient manner.

Mission Area	Critical Task I.D.	Critical Tasks
Critical Transportation		
Response	2	Ensure basic human needs are met, stabilize the incident, transition into recovery for an affected area, and restore basic services and community functionality.

Mission Area	Critical Task I.D.	Critical Tasks
Mass Care Services		
Response	1	Move and deliver resources and capabilities to meet the needs of disaster survivors, including individuals with access and functional needs.
	2	Establish, staff, and equip emergency shelters and other temporary housing options (including accessible housing) for the affected population.

Mission Area	Critical Task I.D.	Critical Tasks
Operational Communications		
Response	1	Ensure the capacity to communicate with both the emergency response community and the affected populations and establish interoperable voice and data communications between Federal, tribal, state, and local first responders.

EMERGENCY SUPPORT FUNCTION
7: LOGISTICS MANAGEMENT & RESOURCE SUPPORT

Mission Area	Critical Task I.D.	Critical Tasks
Economic Recovery		
Recovery	1	Conduct a preliminary assessment of economic issues and identify potential inhibitors to fostering stabilization of the affected communities.

5. Organization

- 5.1. Yakima Valley Emergency Services Executive Board (ESEB) will establish overall resource management priorities and strategies as appropriate and necessary.
- 5.2. Authorization for expenditures, entering into contracts, and other administrative issues will come from The Policy/Decision Group.
- 5.3. YVEM will coordinate the staffing of the ESF #7 position. Personnel assigned to this position are designated by the Emergency Management Director. The ESF #7 position, when activated, operates within the Yakima County EOC and acts as the Logistics Section Chief and reports to the EOC Manager. This position is the link to providing resources to field operations.
- 5.4. The ESF #7 position provides subject-matter expertise to other EOC positions. Based on potential need, this ESF may operate on a 24-hour basis. Supporting agencies have representatives available at the county EOC or by telephone or pager on a 24-hour basis while ESF #7 is operational.

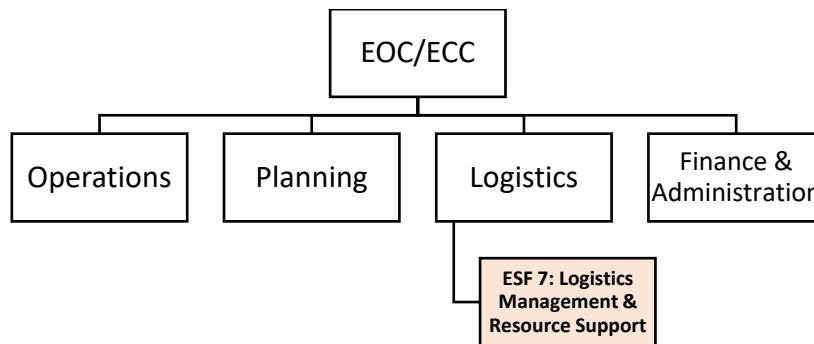


Figure 1: YCEOC, ESF #7, Organizational Chart Example

6. Direction, Control, & Coordination

- 6.1. Local government Incident Commanders (IC) where the emergency occurs will exercise tactical direction and control of disaster activities within that jurisdiction. The IC, or designee, will coordinate with YVEM, who is responsible for implementing the County Comprehensive Emergency Management Plan (CEMP). Each jurisdiction shall establish Standard Operating Guidelines (SOGs) to control and direct response and recovery actions. In cases where local resources to contend with an emergency do not exist or have been depleted, the affected IC, in coordination with Yakima Valley Emergency Management (YVEM), should request county aid first and then followed by state aid through the county and/or state EOCs, respectively. Resources made available to the local government will be under the operational control of the Chief Elected Official (CEO) or designee

EMERGENCY SUPPORT FUNCTION
7: LOGISTICS MANAGEMENT & RESOURCE SUPPORT

through the Incident Commander. When the resource mission is completed, the local ECC and YCEOC/YVEM will be notified, and the resource returned for other assignment.

- 6.2. If the needed response exceeds these local capabilities, the CEO of the local jurisdiction may declare a “State of Emergency” to expedite access to resources needed to cope with the incident.
- 6.3. YVEM is responsible for the proper functioning of the Yakima County Emergency Operations Center (YCEOC) during emergency operations. YVEM also acts as a liaison with state and federal emergency agencies, and neighboring counties.
- 6.4. The YCEOC is the central point for coordinating emergency response and recovery actions. The purpose of this central point is to ensure harmonious response when the emergency involves more than one political entity and several response agencies. Coordination of services will be through the YCEOC Manager and Section Coordinators to provide for the most efficient management of resources.
- 6.5. Department/agency heads and other officials legally administering their office may perform their emergency function(s) on their own initiative if, in their judgment, the safety or welfare of the population is threatened. The YCEOC and/or YVEM should be notified as soon as possible.

7. Information Collection, Analysis, & Dissemination

- 7.1. Information collection on communication systems status will be coordinated through ESF #2 and the YCEOC or other designated point as appropriate to the incident.
- 7.2. The local Incident Commander (IC) or designee is responsible for providing situation reports and periodic updates to keep the YCEOC informed. YCEOC, YVEM, or designee, shall provide situation reports to local support agencies/jurisdiction ECCs and the Washington State Emergency Management Division (WAEMD) – State Emergency Operations Center (SEOC) as appropriate.
- 7.3. Jurisdiction, agency, private-sector, non-governmental, and volunteer organization representatives within the YCEOC will assist with meeting the information collection, analysis, and dissemination needs/methods of the JIC and YCEOC. This will include maintaining contact with their local PIOs for reports and updates.
- 7.4. Some incoming information/requests (e.g. expenditures and entering into contracts) into the YCEOC may require a vetting process through the Policy Group and the YCEOC Manager due to legal, policy, ethical, or other concerns.
- 7.5. The YCEOC will be responsible for collection, analysis, and dissemination of the latest incident information and resources as depicted in Figure 1: YCEOC Information Collection, Analysis, and Dissemination process.

**EMERGENCY SUPPORT FUNCTION
7: LOGISTICS MANAGEMENT & RESOURCE SUPPORT**

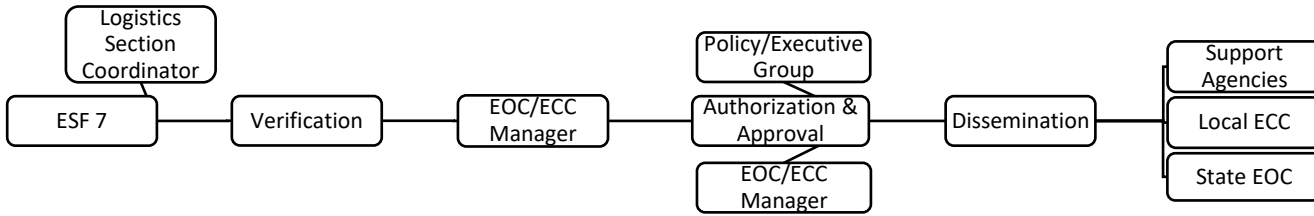


Figure 2: YCEOC Information Collection, Analysis, and Dissemination

8. Responsibilities

Response Mission Area			
Core Capability	Critical Task I.D.	Activity/Action	Organization(s) Name
Logistics & Supply Chain Management	1	Develop procedures for rapidly procuring supplies and equipment and how to effectively track their delivery and use.	YVEM
			Yakima City/County Purchasing Dept.
			Municipal Governments (finance)
Logistics & Supply Chain Management	1, 2	Register emergency workers (other than employees of the county, cities or towns) under RCW 38.52 and WAC 118-04.	Yakima County Human Resources
Logistics & Supply Chain Management	1, 2	Track all disaster responders and volunteers (check-in and check-out)	Yakima County Human Resources
Logistics & Supply Chain Management	1, 2	Facilitate the operations of the voluntary organizations to permit them to function to the full extent of their mission and expertise.	YVEM
Logistics & Supply Chain Management	1, 2	Contracts with commercial vendors will be initiated to obtain supplies and equipment unavailable in existing inventories.	YVEM
			Yakima City/County Purchasing Dept. Public Services/Works
Operational Coordination	1, 2	Coordinate within their jurisdictions for donated goods and services and assure local resources are expended prior to seeking assistance from YVEM or YCEOC for state support.	YVEM
			County & Municipal Governments
Operational Coordination	1, 2	Shall be a Policy Group member for allocating funds for emergencies. The finance representative may report to the appropriate YCEOC or appropriate ECC to coordinate allocated funding if the situation warrants it.	Yakima County Finance
			Municipal Governments (finance)
	1, 2	Resource need requests will be prioritized, allocated and deployed in mission assignments. Missions will be	YVEM

EMERGENCY SUPPORT FUNCTION
7: LOGISTICS MANAGEMENT & RESOURCE SUPPORT

Response Mission Area			
Core Capability	Critical Task I.D.	Activity/Action	Organization(s) Name
Operational Coordination		tracked, and resources will be reassigned if they become available for subsequent uses.	County & Municipal Governments
Infrastructure Systems	1	Coordinate the provision of materials, services and facilities in support of emergency operations.	YVEM Yakima County Public Services Municipal Public Works
Infrastructure Systems	1, 2, 3	Coordinate and provide information regarding road closures and accessibility to and from disaster.	YVEM Yakima County Public Services Municipal Public Works
Critical Transportation	2	Obtain an assessment of the regional transportation network and analyze information to determine the feasibility of accessing existing supply storage locations. The management of initial emergency response will be the responsibility of the Incident Commander(s).	Primary Organization – YVEM
Mass Care Services	1	Coordinate the assignment of donations management resources.	YVEM
Mass Care Services	1	Coordinate the establishment and operation of Points of Distribution to distribute commodities, if necessary.	YVEM Yakima Health District
Mass Care Services	1	Conduct Inspections of disaster relief food, medical and health issues to assure that they meet state health requirements.	Yakima Health District
Mass Care Services	2	Coordinate establishment of, staff for, and equip emergency shelters and other temporary housing options (including accessible housing) for the affected population	YVEM American Red Cross – Central & Southeastern Washington
Operational Communications	1	Establish communication links with support agencies.	All Primary and Support Organizations
Operational Communications	1	Obtain and distribute, through appropriate channels, incident contact information to emergency responders mobilized through ESF #7.	All Primary and Support Organizations

EMERGENCY SUPPORT FUNCTION
7: LOGISTICS MANAGEMENT & RESOURCE SUPPORT

Recovery Mission Area			
Core Capability	Critical Task I.D.	Activity/Action	Organization(s) Name
Economic Recovery	1	Conduct a preliminary assessment of economic issues and continue to utilize primary and alternate resources to foster priority stabilization.	YVEM

9. Resource Requirements

Resources	Providers
Desktop or Laptop	Yakima County EOC (may bring home agency laptop)
WebEOC login	Primary Agency/Organization
Contact list (phone & email) of organizations (master list)	Yakima County EOC or Home Agency/Organization
Internet and folder drive access	Yakima County EOC
Appropriate Home Agency/Org SOPs (hard & soft copies)	Primary Agency/Organization
Desk Phone	Yakima County EOC
Tiered communication structure with Incident Management Teams (IMT)	Yakima County EOC
Two-way Radio	Yakima County EOC or Home Organization
Training	Providers
E/G0191 (Emergency Operations Center/Incident Command System Interface)	Various locations (in-residence)
IS 100, 200, 700, 800	FEMA Emergency Management Institute (online)
ICS 300, 400	Various locations (in-residence)
Position training	Yakima Valley Emergency Management (YVEM)

10. References and Supporting Plans

- 10.1. [ESF 1](#) – Transportation, Yakima County CEMP
- 10.2. [ESF 3](#) – Public Works and Engineering, Yakima County CEMP
- 10.3. [ESF 4](#) – Firefighting, Yakima County
- 10.4. [ESF 5](#) – Emergency Management, Yakima County CEMP
- 10.5. [ESF 6](#) – Mass Care, Yakima County CEMP
- 10.6. [ESF 8](#) – Public Health and Medical Services, Yakima County CEMP
- 10.7. [ESF 11](#) – Agriculture and Natural Resources, Yakima County CEMP
- 10.8. [ESF 12](#) – Energy and Utilities, Yakima County CEMP
- 10.9. [ESF 13](#) – Public Safety, Law Enforcement, and Security, Yakima County CEMP
- 10.10. [Washington State Comprehensive Emergency Management Plan \(CEMP\)](#)
- 10.11. [Washington State RCW – 38.52.070](#) - Emergency Contracts and Obligations
- 10.12. [Washington State RCW – 38.52.110](#) - Use of existing resources; command the service and equipment of the citizens

11. Terms and Definitions

EMERGENCY SUPPORT FUNCTION
7: LOGISTICS MANAGEMENT & RESOURCE SUPPORT

- 11.1. **Yakima Valley Emergency Services Executive Board (ESEB)** – Governs the operations of the Yakima Valley Emergency Management Office. The executive board is comprised of a County Commissioner, four mayors (or designee), the Sheriff and the Emergency Management Director. The executive board meets quarterly to provide oversight and direction to the office.