

EMERGENCY SUPPORT FUNCTION
11: AGRICULTURE & NATURAL RESOURCES

Coordinating:

Yakima Health District
Yakima Valley Emergency Management

Primary(s):

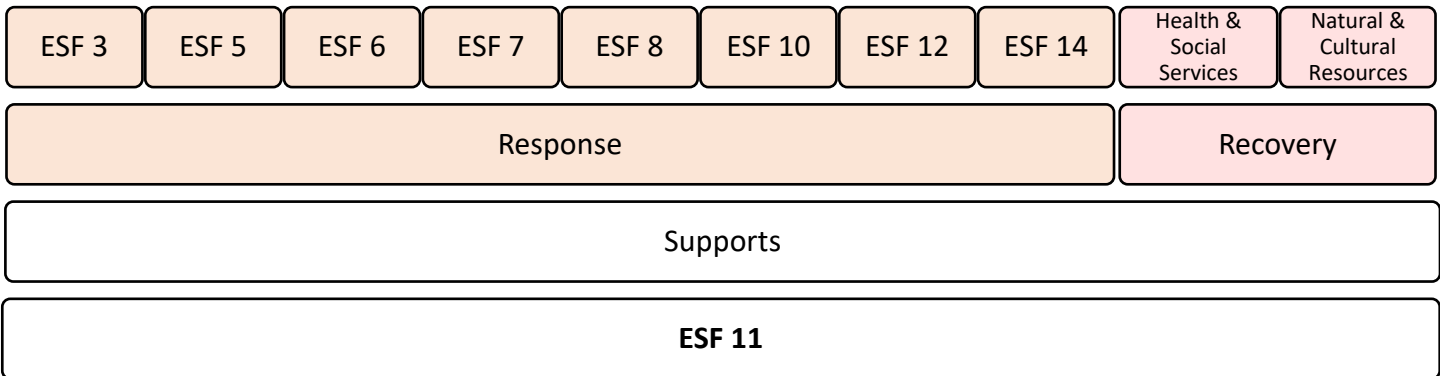
Yakima Health District

Supporting:

American Red Cross – Central and Southeastern Washington
Washington Department of Health
Washington State Dairy Federation
Washington State Department of Ecology
Washington State Department of Agriculture
Washington State University (WSU) Extension
Yakima Humane Society/Yakima Sheriff’s Office Animal Control
Yakima Valley Emergency Management

Other Emergency Support Functions (ESFs) or Recovery Functions exist that coordinate with or support this ESF:

- On the ESF Core Capabilities Matrix, find Primary core capabilities (P) within this ESF and then move vertically and add all Supporting (S) core capabilities and equate them to ESFs.
- Next find all Supporting (S) ESFs in the column and then move horizontally along each row of a Supporting (S) core capability to find all Primary (P) ESFs.



1. Purpose

1.1. Emergency Support Function #11 – Agriculture and Natural Resources, identifies, coordinates and secures the effort to provide nutritional resources necessary to support an emergency response or recovery effort or other disaster assistance initiative; control and eradication of an outbreak of a highly contagious or economically devastating animal/zoonotic disease, highly infective exotic plant disease; assurance of food safety and food security (under USDA jurisdictions and authorities); protect natural and cultural resources and historic properties resources (NCH); provide for the safety and well-being of household pets and farm animals during an emergency response or evacuation situation; and provide disposal management assistance during large-scale animal mortality events.

EMERGENCY SUPPORT FUNCTION
11: AGRICULTURE & NATURAL RESOURCES

Primary Core Capabilities	
Response Mission Area	
Environmental Response/Health & Safety	Conduct appropriate measures to ensure the protection of the health and safety of the public and workers, as well as the environment, from all hazards in support of responder operations and the affected communities.
Recovery Mission Area	
Natural and Cultural Resources	Protect natural and cultural resources and historic properties through appropriate planning, mitigation, response, and recovery actions to preserve, conserve, rehabilitate, and restore them consistent with post-disaster community priorities and best practices and in compliance with applicable environmental and historic preservation laws and Executive orders.

Support Core Capabilities	
Response Mission Area	
Critical Transportation	Provide transportation (including infrastructure access and accessible transportation services) for response priority objectives, including the evacuation of people and animals and the delivery of vital response personnel, equipment, and services into the affected areas.
Logistics & Supply Chain Management	Deliver essential commodities, equipment, and services in support of impacted communities and survivors, to include emergency power and fuel support, as well as the coordination of access to community staples. Synchronize logistics capabilities and enable the restoration of impacted supply chains.
Mass Care Services	Provide life-sustaining and human services to the affected population, to include hydration, feeding, sheltering, temporary housing, evacuee support, reunification, and distribution of emergency supplies.
Situational Assessment	Provide all decision makers with decision-relevant information regarding the nature and extent of the hazard, any cascading effects, and the status of the response.
Recovery Mission Area	
Health and Social Services	Restore and improve health and social services capabilities and networks to promote the resilience, independence, health (including behavioral health), and well-being of the whole community.

2. Policies and Authorities

2.1. Policies

- 2.1.1. State agricultural and natural resources assistance to local jurisdictions is directed by Washington Military Department through the Department of Agriculture or the designated representative.

EMERGENCY SUPPORT FUNCTION
11: AGRICULTURE & NATURAL RESOURCES

2.1.2. Local jurisdictions will activate mutual aid agreements when their resources are depleted or committed. Additional state and federal assistance will be requested through the Yakima County Emergency Operations Center (YCEOC) and coordinated and provided through the Washington State Military Department, Emergency Management Division (WEMD)/State Emergency Operations Center (SEOC), when local public and private resources have been exhausted.

2.2. Authorities

- 2.2.1. Congressional House Rule (HR) 3858 – Pets Evacuation and Transportation Standards Act of 2006 addresses the needs of individuals with household pets and service animals following a major disaster or emergency.
- 2.2.2. [Revised Code of Washington \(RCW\) 70.05.060](#) outlines the powers and duties of the local board of health; each local board of health has supervision over all matters pertaining to the preservation of the life and health of the people within its jurisdiction.
- 2.2.3. [RCW 70.05.070](#) outlines the powers and duties of the local health officer.
- 2.2.4. [RCW 70.95.160](#) directs the local board of health to adopt regulations or ordinances governing solid waste handling to implement the comprehensive plan.
- 2.2.5. [RCW 16](#) covers regulations related to animals and livestock, including county dog licensing and dog control zones, stock-restricted areas, and dangerous wild animals and addresses prevention of cruelty to animals.
- 2.2.6. [Washington Administration Code \(WAC\) 246-100-197](#) addresses rabies and measures to prevent human disease.
- 2.2.7. [WAC 16-25](#) address disposal of dead livestock.
- 2.2.8. [WAC 246-203-121](#) addresses the disposal of dead animals.

3. Situation Overview

- 3.1. A significant disaster event may deny human and animal populations access to food and water, may create conditions that prevent individuals with food supplies from preparing them, or may displace a population from their homes and create a widespread need for food and drink.
- 3.2. The extent of damage to the infrastructure of the affected area, in addition to the peculiarities of the transportation network in the area, will influence the strategy or pattern of assistance.
- 3.3. Food supplies intended for human populations will be suitable for either household distribution or congregate meal service. Food supplies will be provided from existing managed inventories whenever possible.

EMERGENCY SUPPORT FUNCTION
11: AGRICULTURE & NATURAL RESOURCES

- 3.4. Under certain conditions, live or dead livestock and/or other agriculture related animals may need to be evacuated or disposed of from an affected area.
- 3.5. Provisions might need to be made to support livestock owners returning to evacuated areas to care for their animals.
- 3.6. Procurement will be conducted in accordance with federal, state, and county laws and regulations, including provisions for emergency procurement and no-bid contracting during a declared “State of Emergency”.
- 3.7. Close cooperation will be maintained with the ESF #6 (Mass Care) position to ensure an efficient system is employed that satisfies the needs of the greatest number of people.
- 3.8. Commercial and retail food storage facilities may be inoperable as a result of widespread power failure; thus, some privately held, large-volume food supplies may not be available as sources to obtain goods.

4. Concept of Operations

- 4.1. Yakima Valley Emergency Management, as the ESF #11 coordinator, organizes and coordinates the capabilities and resources of local government, private agencies, and organizations through the Yakima County EOC.
- 4.2. ESF #11 provides for integrated local response and local liaison duties with State and Federal resources for situations involving an outbreak of a highly contagious animal or zoonotic disease, an outbreak of a highly infective plant disease, a large-scale animal fatality event (typically from a natural disaster), or infestation affecting crops impacting Yakima County.
- 4.3. ESF #11 ensures the safety and security of Yakima County’s commercial supply of food products following a potential or actual incident affecting Yakima County. It supports a liaison role for State and/or Federal government, should the situation necessitate such actions, as may occur if the situation is an Incident of National Significance or impacts Washington State.
- 4.4. Local government within Yakima County and its incorporated cities and towns act as the primary agencies for protecting, recovering, and restoring NCH resources at the local level.
- 4.5. Resource needs and requests will be obtained from Yakima County departments and agencies, other ESFs, and municipalities. Requests will be prioritized, and resources will be allocated and deployed in mission assignments. Missions will be tracked, and resources will be reassigned as they become available for subsequent uses.
- 4.6. **Whole Community Involvement**
 - 4.7.1. A successful Whole Community agricultural and natural resources program assesses local assets and capabilities, bolsters identified weaknesses, and supports locally-driven solutions. This includes, but is not limited to, inclusive disaster planning, supporting local response

EMERGENCY SUPPORT FUNCTION
11: AGRICULTURE & NATURAL RESOURCES

organizations and processes, developing partnerships with supportive groups and agencies, and ensuring a place at the table for government, residents, NGOs, businesses, churches, advocacy organizations, and other stakeholders.

- 4.7.2. ESF #11 recognizes that inclusion and accessibility is about more than language translation. Inclusion and accessibility mean a concerted effort to engage populations with limited English proficiency (LEP), disabilities, or other conditions that limit access to recovery services, and to promote effective resource accessibility – that is, that no impacted individuals face a unique burden in securing resources for which they qualify, and that are available to others.
- 4.7.3. The Whole Community includes populations with individuals with disabilities and Access and Functional Needs (AFN). Any agency or organization that receives federal funding is required to have a plan or policy for addressing the needs of individuals with Limited English Proficiency (LEP), pursuant to Title VI, the Civil Rights Act. The Washington State Emergency Management Division and this ESF expects all agencies and organizations to comply with federal law. For more information on how each agency or organization complies with federal law, please contact the individual agency or organization.

4.8 Critical Tasks

Mission Area	Critical Task I.D.	Critical Tasks
Environmental Response/Health & Safety		
Response	1	Identify, assess, and mitigate worker health and safety hazards, and disseminate health and safety guidance and resources to response and recovery workers.
	2	Minimize public exposure to environmental hazards through assessment of the hazards and implementation of public protective actions.
	3	Detect, assess, stabilize, and clean up releases of oil and hazardous materials into the environment, including buildings/structures, and properly manage waste.

Mission Area	Critical Task I.D.	Critical Tasks
Critical Transportation		
Response	2	Ensure basic human needs are met, stabilize the incident, transition into recovery for an affected area, and restore basic services and community functionality.

Mission Area	Critical Task I.D.	Critical Tasks
Logistics & Supply Chain Management		
Response	1	Mobilize and deliver governmental, nongovernmental, and private sector resources to save lives, sustain lives, meet basic human needs, stabilize the incident, and transition to recovery, to include moving and delivering resources and services to meet the needs of disaster survivors.
	2	Enhance public and private resource and services support for an affected area.

EMERGENCY SUPPORT FUNCTION
11: AGRICULTURE & NATURAL RESOURCES

Mission Area	Critical Task I.D.	Critical Tasks
Mass Care Services		
Response	1	Move and deliver resources and capabilities to meet the needs of disaster survivors, including individuals with access and functional needs.

Mission Area	Critical Task I.D.	Critical Tasks
Situational Assessment		
Response	1	Deliver information sufficient to inform decision making regarding immediate lifesaving and life-sustaining activities, and engage governmental, private, and civic sector resources within and outside of the affected area to meet basic human needs and stabilize the incident.
	2	Deliver enhanced information to reinforce ongoing lifesaving and life-sustaining activities, and engage governmental, private, and civic sector resources within and outside of the affected area to meet basic human needs, stabilize the incident, and transition to recovery.

Mission Area	Critical Task I.D.	Critical Tasks
Health and Social Services		
Recovery	1	Identify affected populations, groups, and key partners in short-term, intermediate, and long-term recovery.
	2	Complete an assessment of community health and social service needs; prioritize these needs, including accessibility requirements, based on the whole community's input and participation in the recovery planning process; and develop a comprehensive recovery timeline.
	3	Restore health care (including behavioral health), public health, and social services functions.
	4	Restore and improve the resilience and sustainability of the health care system and social service capabilities and networks to promote the independence and well-being of community members in accordance with the specified recovery timeline.

Mission Area	Critical Task I.D.	Critical Tasks
Natural and Cultural Resources		
Recovery	1	Implement measures to protect and stabilize records and culturally significant documents, objects, and structures.
	2	Mitigate the impacts to and stabilize the natural and cultural resources and conduct a preliminary assessment of the impacts that identifies protections that need to be in place during stabilization through recovery.

EMERGENCY SUPPORT FUNCTION
11: AGRICULTURE & NATURAL RESOURCES

Mission Area	Critical Task I.D.	Critical Tasks
Natural and Cultural Resources		
	3	Complete an assessment of affected natural and cultural resources and develop a timeline for addressing these impacts in a sustainable and resilient manner.
	4	Preserve natural and cultural resources as part of an overall community recovery that is achieved through the coordinated efforts of natural and cultural resource experts and the recovery team in accordance with the specified timeline in the recovery plan.

5. Organization

5.1. The ESF #11 response structure operates under the direction of the Coordinating Organization/Agency, which determines the Lead Primary Organization(s) on the basis of the assistance needed for the specific incident.

Functional Categories	Nutrition Assistance	Animal and Plant Disease and Pest Response	Large-Scale Animal Mortality Response	Food Safety and Security Supply	NCH Resources Protection
ESF #11 – Primary Organization	ARC/YVEM	WSU Cooperative Extension	Yakima Health District	Yakima Health District	Local Government
ESF #11 – Responsibilities	Determine needs to provide food for nutrition assistance to the local public in the event of disaster	Coordinating local response for animal, zoonotic or plant disease or infestation	Coordinating local response for large-scale animal mortality due to a natural disaster	Coordinating local response for adulterated or suspected adulterated food supplies	Determine the needs for protecting, restoring or recovering NCH resources

5.1.1. Regardless of the nature of the emergency, the county will likely establish a Joint Information Center (JIC) that functions as the principal source of information about the response in the state. The JIC coordinates closely with local, state and federal officials to ensure consistency in the information released to the communications media and the public. At any time, other agency and organization public information officers (PIOs) may be called upon as subject matter experts to assist as needed.

EMERGENCY SUPPORT FUNCTION
11: AGRICULTURE & NATURAL RESOURCES

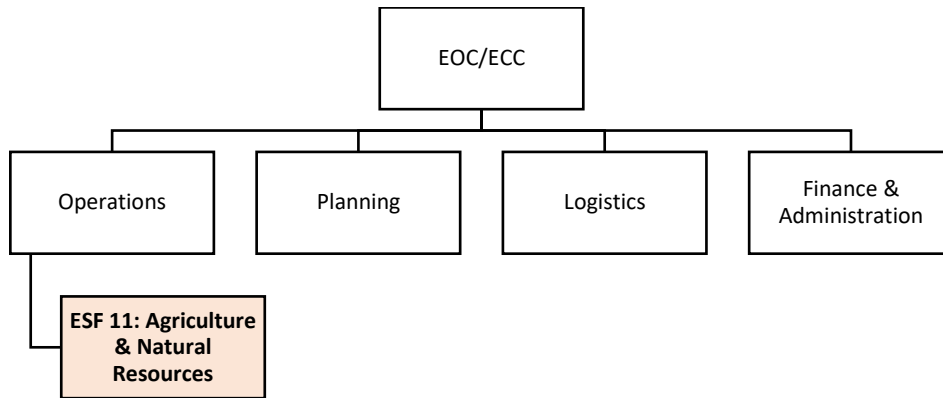


Figure 1: YCEOC, ESF #11, Organizational Chart Example

6. Direction, Control, & Coordination

6.1. ESF #11 is organized in accordance with the National Response Framework (NRF) and the Washington Comprehensive Emergency Management Plan (CEMP).

6.1.1. Horizontal Integration - This annex is concerned with the Response and Recovery Mission Areas. It is an interagency plan that provides direction to county government entities concerned with responding to and recovering from issues following a disaster.

6.1.2. Response – The structures and bodies laid out in this annex should integrate horizontally into structures and bodies established by the NRF to address the Response and Recovery mission areas and support functions. ESF #11 may provide leadership in creating these connections, hosting relevant meetings, and in general, ensuring the response mission is well coordinated with recovery.

6.1.2.1. Integration with county-level planning efforts regarding response and recovery operations includes: The Yakima County Comprehensive Emergency Management Plan (CEMP) brings together partner organizations in the base plan and Emergency Support Functions to discuss how the county and city/town jurisdictional will organize for response and recovery operations.

6.1.3. Vertical Integration – This ESF Annex should integrate vertically to response plans at the regional level, state and federal level, as well as city/town plans at the local level. It may be common for relevant federal, and state plans to be similarly titled around ESF #11; however, this annex should remain flexible to coordinate with other plans or bodies that align with the Core Capabilities and Critical Tasks listed in this annex.

6.1.3.1. Integration with city/town and non-governmental organization Response plans includes: The county develops and maintain an ESF #11 to assist with integration efforts.

6.1.3.2. Integration with State and Federal Response plans includes: State CEMP and ESF #11 Annex and Response [Federal Interagency Operational Plan \(FIOP\)](#).

EMERGENCY SUPPORT FUNCTION
11: AGRICULTURE & NATURAL RESOURCES

7. Information Collection, Analysis, & Dissemination

- 7.1. ESF #11 coordinates with Response and Recovery Core Capability Leads, and other county and city/town organizations/agencies with potential response/recovery roles to gather and disseminate information on the extent of damages, anticipated unmet needs, and other activities related to response and into recovery. ESF #11 will work to gather, synthesize, and distribute pertinent information to all related response partners, especially those partners identified as Primary Agencies for ESF #11 or executors of ESF #11 core capabilities.
- 7.2. Jurisdiction, agency, private-sector, non-governmental, and volunteer organization representatives within the YCEOC will assist with meeting the information collection, analysis, and dissemination needs/methods of the JIC and YCEOC. This will include maintaining contact with their local PIOs for reports and updates.
- 7.3. Some incoming agricultural and natural resource information/requests (e.g. expenditures and entering into contracts) into the YCEOC may require a vetting process through the Policy Group and/or the YCEOC Manager due to legal, policy, ethical, or other concerns.
- 7.4. The YCEOC will be responsible for collection, analysis, and dissemination of the latest incident information and resources as depicted in Figure 2: YCEOC Information Collection, Analysis, and Dissemination process.

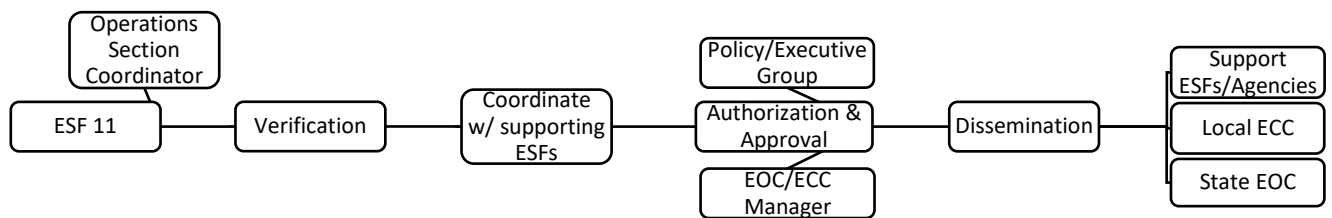


Figure 2: YCEOC Information Collection, Analysis, and Dissemination Process

8. Responsibilities

Response Mission Area			
Core Capability	Critical Task I.D.	Activity/Action	Organization(s) Name
Environmental Response/Health & Safety	1	Provide health and safety guidance and resources to response and recovery workers regarding any biological and/or chemical contamination hazards.	Yakima Health District
Environmental Response/Health & Safety	2	Minimize public exposure to environmental hazards through assessment of public water systems and inspection of temporary food facilities.	Yakima Health District

EMERGENCY SUPPORT FUNCTION
11: AGRICULTURE & NATURAL RESOURCES

Response Mission Area			
Core Capability	Critical Task I.D.	Activity/Action	Organization(s) Name
Environmental Response/Health & Safety	2	Evaluate and monitor the provision of care to livestock and any other agriculture related animals.	Washington State Department of Ecology
			Washington State Department of Agriculture
			Washington State University (WSU) Extension
			YVEM
Environmental Response/Health & Safety	2, 3	Coordinate the response for provision of care to living or mass mortality livestock and any other agriculture related animals.	Yakima Health District
			Washington State Department of Ecology
			Washington State Department of Agriculture
			YVEM
Critical Transportation	2	Coordinate clear routes for animal evacuation or disposal, stabilize the incident, transition into recovery for an affected area, and restore basic services and community functionality.	YVEM
Logistics & Supply Chain Management	1	Coordinate resource needs, and determines and resolves, as necessary, issues regarding resource shortages and resource ordering issues.	All Primary Organizations
Logistics & Supply Chain Management	1	Assist with providing volunteers, resources and equipment to conduct large animal rescue and evacuation and in procuring veterinary services.	Washington State University (WSU) Extension
			YVEM
Logistics & Supply Chain Management	1, 2	Ensure the safety and security of commercial food supply.	Yakima Health District
			YVEM
Mass Care Services	1	Assist ESF #6 and ESF #13 with the evacuation and sheltering of domestic and service animals.	Yakima Humane Society/Yakima Sheriff's Office Animal Control
			YVEM

EMERGENCY SUPPORT FUNCTION
11: AGRICULTURE & NATURAL RESOURCES

Response Mission Area			
Core Capability	Critical Task I.D.	Activity/Action	Organization(s) Name
Situational Assessment	1	Obtain an initial situation and damage assessment through established intelligence procedures; determines the appropriate management response to meet the request for assistance.	All Primary Organizations
Situational Assessment	2	Activities focused on gathering and delivering information to engage partner organizations/agencies related to response and the transition into recovery.	All Primary Organizations

Recovery Mission Area			
Core Capability	Critical Task I.D.	Activity/Action	Organization(s) Name
Health and Social Services	1, 2	Support the recovery of people with disabilities or additional needs, including Limited English Proficiency, through partnerships with specialized organizations.	All Primary Organizations
Health and Social Services	2	Participate in the after-action review process of the disaster/emergency response to develop a comprehensive recovery timeline.	All Primary Organizations
Health and Social Services	3, 4	Coordinate and/or support recovery activities consistent with their organization missions and capabilities.	All Primary and/or Support Organizations
Natural & Cultural Resources	1	Supports impacted jurisdictions with environmental recovery through administered grant programs.	Washington State Department of Ecology
			YVEM
Natural & Cultural Resources	1, 2, 3, 4	Recovery efforts will be primarily handled by ESF #14 (Long Term Community Recovery) in conjunction with ESF #5. Each ESF position should provide input on efforts that will be beneficial to reducing the risk of or damage caused by futures event.	All Primary and/or Support Organizations

9. Resource Requirements

Resources	Providers
Desktop or Laptop	Yakima County EOC (may bring home agency laptop)
WebEOC login	Primary Agency/Organization
Contact list (phone & email) of organizations (master list)	Yakima County EOC or Home Agency/Organization
Internet and folder drive access	Yakima County EOC

EMERGENCY SUPPORT FUNCTION
11: AGRICULTURE & NATURAL RESOURCES

Appropriate Home Agency/Org SOPs (hard & soft copies)	Primary Agency/Organization
Desk Phone	Yakima County EOC
Tiered communication structure with Incident Management Teams (IMT)	Yakima County EOC
Two-way Radio	Yakima County EOC or Home Organization
Training	Providers
E/G0191 (Emergency Operations Center/Incident Command System Interface)	Various locations (in-residence)
IS 100, 200, 700, 800	FEMA Emergency Management Institute (online)
ICS 300, 400	Various locations (in-residence)
Position training	Yakima Valley Emergency Management (YVEM)

10. References and Supporting Plans

- 10.1. ESF 3 – Public Works and Engineering, Yakima County CEMP
- 10.2. ESF 5 – Emergency Management, Yakima County CEMP
- 10.3. ESF 6 – Mass Care, Housing, and Human Services, Yakima County CEMP
- 10.4. ESF 7 – Resource Support, Yakima County CEMP
- 10.5. ESF 8 – Public Health and Medical Services, Yakima County CEMP
- 10.6. ESF 10 – Oil and Hazardous Materials, Yakima County CEMP
- 10.7. ESF 12 – Energy and Utilities, Yakima County CEMP
- 10.8. ESF 14 – Long-Term Recovery, Yakima County CEMP
- 10.9. [Washington State Comprehensive Emergency Management Plan \(CEMP\) – ESF #11](#)
 - 10.9.1. [Washington State CEMP, ESF #11 – Appendix 2: State Animal Response Plan](#)
 - 10.9.2. [Washington State CEMP, ESF #11 – Appendix 3: State Plant Health Plan](#)
 - 10.9.3. [Washington State CEMP, ESF #11 – Appendix 4: State Food and Feed Emergency Plan](#)
 - 10.9.4. [Washington State CEMP, ESF #11 – Appendix 5: Protection of Natural, Cultural and Historic Resources](#)

11. Terms and Definitions

- 11.1. National Response Framework (NRF) – The National Response Framework is a guide to how the Nation responds to all types of disasters and emergencies. It is built on scalable, flexible, and adaptable concepts identified in the National Incident Management System to align key roles and responsibilities across the Nation.
- 11.2. Whole Community – A focus on enabling the participation in national preparedness activities of a wider range of players from the private and nonprofit sectors, including nongovernmental organizations and the general public, in conjunction with the participation of all levels of government in order to foster better coordination and working relationships. Used interchangeably with “all-of-Nation.” (National Preparedness Goal, September 2015)

12. Appendices

- 12.1. Appendix 1 – Mass Animal Mortality Response Plan

EMERGENCY SUPPORT FUNCTION
11: AGRICULTURE & NATURAL RESOURCES

Appendix 1 – MASS ANIMAL MORTALITY RESPONSE PLAN

Coordinating:

Yakima Health District
Yakima Valley Emergency Management

Primary(s):

Yakima Health District

Supporting:

Washington Department of Health
Washington State Dairy Federation
Washington State Department of Ecology
Washington State Department of Agriculture
Washington State University (WSU) Extension
Yakima Valley Emergency Management

1. Introduction

1.1. Purpose

1.1.1. This appendix provides guidelines for a rapid response and recovery to Mass Animal Mortality Events (MAMEs) affecting the health, safety and welfare of humans, animals and free ranging wildlife populations, and timely and proper disposal of dead animals, contaminated animal products and animal waste following natural or technological disasters.

Primary Core Capabilities	
Response Mission Area	
Environmental Response/Health & Safety	Conduct appropriate measures to ensure the protection of the health and safety of the public and workers, as well as the environment, from all hazards in support of responder operations and the affected communities.

Support Core Capabilities	
Response Mission Area	
Critical Transportation	Provide transportation (including infrastructure access and accessible transportation services) for response priority objectives, including the evacuation of people and animals and the delivery of vital response personnel, equipment, and services into the affected areas.
Logistics & Supply Chain Management	Deliver essential commodities, equipment, and services in support of impacted communities and survivors, to include emergency power and fuel support, as well as the coordination of access to community staples. Synchronize logistics capabilities and enable the restoration of impacted supply chains.

EMERGENCY SUPPORT FUNCTION
11: AGRICULTURE & NATURAL RESOURCES

Support Core Capabilities	
Situational Assessment	Provide all decision makers with decision-relevant information regarding the nature and extent of the hazard, any cascading effects, and the status of the response.

2. Policies and Authorities

2.1. Policies

- 2.1.1. State agricultural and natural resources assistance to local jurisdictions is directed by Washington Military Department through the Department of Agriculture or the designated representative.
- 2.1.2. Local jurisdictions will activate mutual aid agreements when their resources are depleted or committed. Additional state and federal assistance will be requested through the Yakima County Emergency Operations Center (YCEOC) and coordinated and provided through the Washington State Military Department, Emergency Management Division (WEMD)/State Emergency Operations Center (SEOC), when local public and private resources have been exhausted.

2.2. Authorities

- 2.2.1. [Revised Code of Washington \(RCW\) 70.05.060](#) outlines the powers and duties of the local board of health; each local board of health has supervision over all matters pertaining to the preservation of the life and health of the people within its jurisdiction.
- 2.2.2. [RCW 70.95.160](#) directs the local board of health to adopt regulations or ordinances governing solid waste handling to implement the comprehensive plan.
- 2.2.3. [RCW 16.68](#) Disposal of Dead Animals.
- 2.2.4. [Washington Administration Code \(WAC\) 246-100-197](#) addresses rabies and measures to prevent human disease.
- 2.2.5. [Washington Administrative Code \(WAC\) 16-25](#) address disposal of dead livestock.
- 2.2.6. [WAC 246-203-121](#) addresses the disposal of dead animals.

3. Situation Overview

- 3.1. Animal agriculture is a major contributor to the economy of Washington. The negative impact of a Mass Animal Mortality Event (MAME), natural or man-made disaster, could result in profound economic loss with the County.
- 3.2. The extent of damage to the infrastructure of the affected area, in addition to the peculiarities of the transportation network in the area, will influence the strategy or pattern of assistance.

EMERGENCY SUPPORT FUNCTION
11: AGRICULTURE & NATURAL RESOURCES

- 3.3. Food supplies intended for human populations will be suitable for either household distribution or congregate meal service. Food supplies will be provided from existing managed inventories whenever possible.
- 3.4. A natural or technological disaster could result in mass animal mortality. A large number of unattended animal carcasses could have a negative impact on public health and the environment. Local authorities are responsible for the removal of animal carcasses. However, if local jurisdictional governments or the county government is overwhelmed, has depleted or anticipates depleting its resources, it may request assistance through the State Emergency Operations Center (SEOC). The SEOC Operation Section will designate state agencies to assist with the removal of animal carcasses.

4. Concept of Operations

- 4.1. Yakima Valley Emergency Management and Yakima Health District, as the ESF #11, Appendix 1: Mass Animal Mortality Management Plan, co-coordinators, organizes and coordinates the capabilities and resources of local government, private agencies, and organizations through the Yakima County EOC, if necessary.
- 4.2. ESF #11 provides for integrated local response and local liaison duties with State and Federal resources for situations involving a large-scale animal mortality event (typically from a natural disaster) impacting Yakima County.
- 4.3. Resource needs and requests will be obtained from Yakima County departments and agencies, municipalities, other ESFs, and State agencies. Requests will be prioritized, and resources will be allocated and deployed in mission assignments. Missions will be tracked, and resources will be reassigned as they become available for subsequent uses.
- 4.4. The Yakima Health District will, as necessary, coordinate the disposal of animal carcasses that have died from a natural disaster.
- 4.5. Methods of carcass disposal may include, but are not limited to:

Carcass Disposal Options	
Burial	Burning
Composting	Incineration
Landfill	Rendering

- 4.6. Rendering may be used as a disposal method only for cattle, mules, asses, swine, sheep, and goats.
 - 4.6.1. Note: Rendering facilities will not accept any animal euthanized with any type of barbiturate. Since horses are typically “put down”, the rendering facility in Yakima County will not take any horse carcasses.
- 4.7. Animals disposed through rendering must be transported by independent collectors licensed under chapter 16.68 RCW. They must be rendered at a facility licensed under chapter 16.68 RCW.

EMERGENCY SUPPORT FUNCTION
11: AGRICULTURE & NATURAL RESOURCES

4.7.1. Yakima County has two rendering/transfer facilities within the county. All carcasses delivered to the transport facility in Grandview will ultimately be transferred to a rendering facility within the Seattle/Tacoma area. The rendering facility in Toppenish is part of a consumer beef harvesting processing facility.

4.8. Livestock that have died from a reportable disease listed in chapter 16-70 WAC must be disposed of in consultation with the State Veterinarian.

4.9. The Yakima County EOC will request assistance through the SEOC when the county and local jurisdictions have depleted or anticipate depleting their resources to dispose of animal carcasses.

4.9.1. WSDA is the primary state agency for the disposal of dead animals resulting from a disaster after local governments have exhausted their resources. The department will consult with the local health jurisdictions and the Department of Ecology to select the most effective method for the disposal of dead animals based on the situation, location, and environmental and health concerns. However, the State Veterinarian will determine the disposal method for animals that have died from disease, an unknown cause, or were euthanized to prevent the spread of disease.

4.10. Animal carcasses should be transported in closed, leak-proof trucks or dumpsters. Secondary containment may be needed, depending on the type of waste being transported.

4.11. Upon request for carcass disposal, the responsible party will take the following steps:

Responsible Party Carcass Disposal Steps	
•	Visit the site and determine whether or not there is a need for carcass disposal
•	Develop a disposal plan
•	Keep record on file of the disposal plan as well as documentation on animal location, cause of death, ownership or brand of animal, and burial location
•	Ensure compliance with the carcass disposal plan or authorized procedure through coordination with support agencies such as Yakima Health District, WA Department of Ecology and WSDOT if carcasses will be transported on roadways

4.12. Critical Tasks

Mission Area	Critical Task I.D.	Critical Tasks
Environmental Response/Health & Safety		
Response	2	Minimize public exposure to environmental hazards through assessment of the hazards and implementation of public protective actions.
	3	Detect, assess, stabilize, and clean up releases of oil and hazardous materials into the environment, including buildings/structures, and properly manage waste.

EMERGENCY SUPPORT FUNCTION
11: AGRICULTURE & NATURAL RESOURCES

Mission Area	Critical Task I.D.	Critical Tasks
Critical Transportation		
Response	2	Ensure basic human needs are met, stabilize the incident, transition into recovery for an affected area, and restore basic services and community functionality.

Mission Area	Critical Task I.D.	Critical Tasks
Logistics & Supply Chain Management		
Response	1	Mobilize and deliver governmental, nongovernmental, and private sector resources to save lives, sustain lives, meet basic human needs, stabilize the incident, and transition to recovery, to include moving and delivering resources and services to meet the needs of disaster survivors.
	2	Enhance public and private resource and services support for an affected area.

Mission Area	Critical Task I.D.	Critical Tasks
Situational Assessment		
Response	1	Deliver information sufficient to inform decision making regarding immediate lifesaving and life-sustaining activities, and engage governmental, private, and civic sector resources within and outside of the affected area to meet basic human needs and stabilize the incident.
	2	Deliver enhanced information to reinforce ongoing lifesaving and life-sustaining activities, and engage governmental, private, and civic sector resources within and outside of the affected area to meet basic human needs, stabilize the incident, and transition to recovery.

5. Organization

- 5.1. The ESF #11 response structure operates under the direction of the Coordinating Organization/Agency, which determines the Lead Primary Organization(s) on the basis of the assistance needed for the specific incident.
 - 5.1.1. **Mass Animal Mortality Event (MAME) Response** – Yakima Health District is responsible for solid waste disposal within Yakima County and will, as necessary, coordinate the removal of animal carcasses as debris for animals that have died of a known cause that is not disease.

6. Direction, Control, & Coordination

- 6.1. This appendix of ESF #11 is organized in accordance with the Yakima County Comprehensive Emergency Management Plan (CEMP) and the Washington Comprehensive Emergency Management Plan (CEMP) ESF #11, Appendix 2.
 - 6.1.1. Horizontal Integration - This appendix is concerned with the Response Mission Areas. It is an interagency plan that provides direction to county government entities concerned with responding to and recovering from mass animal mortality issues following a disaster.

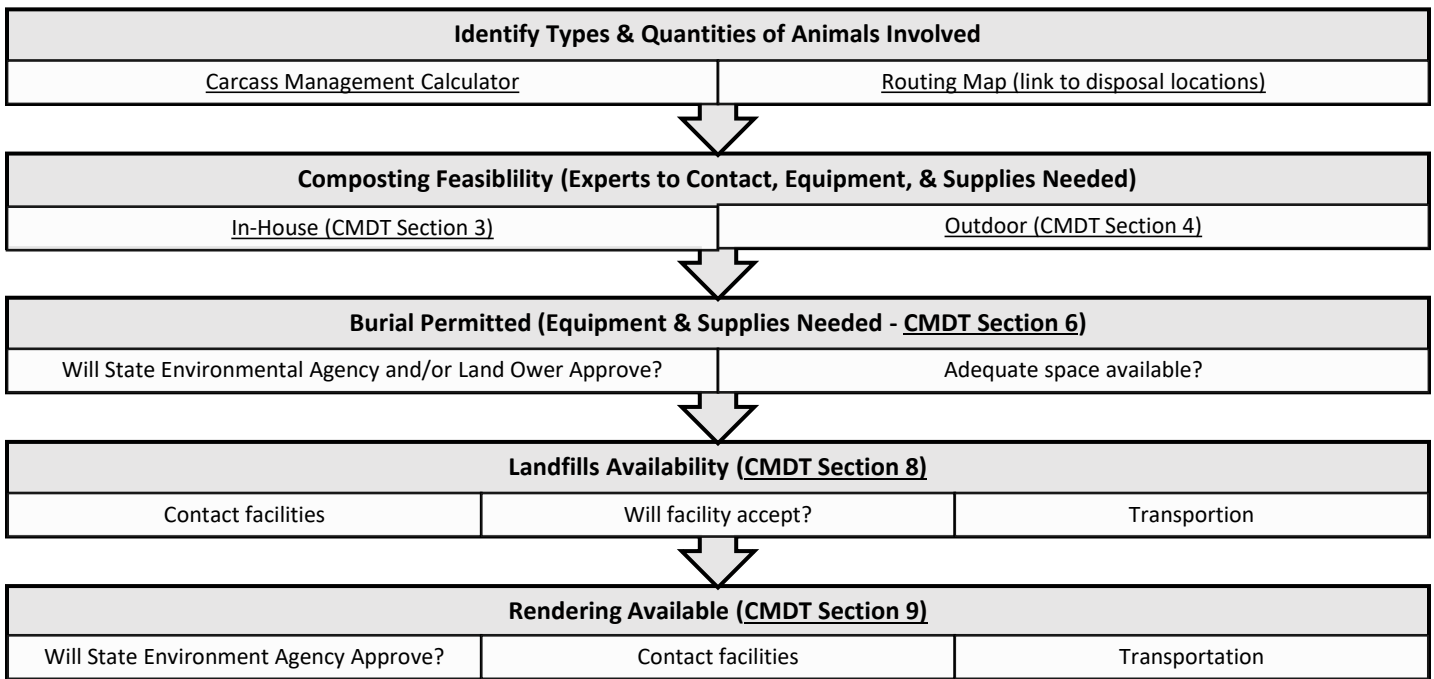
EMERGENCY SUPPORT FUNCTION
11: AGRICULTURE & NATURAL RESOURCES

6.1.2. Vertical Integration – This ESF Appendix should integrate vertically to response plans at the regional level, state and federal level, as well as city/town plans at the local level. It may be common for relevant federal, and state plans to be similarly titled around ESF #11; however, this appendix should remain flexible to coordinate with other plans or bodies that align with the Core Capabilities and Critical Tasks listed in this appendix.

7. Information Collection, Analysis, & Dissemination

7.1. [Carcass Management Decision Tool](#) (CMDT) – USDA has Decision Tool Reference Guide from the Foreign Animal Disease Preparedness and Response Plan.

7.1.1. Commercial facilities that have a Nutrient Management Plan will follow WSDA and USDA guidelines for proper animal carcass disposal procedures.



Note: Underlined text in the graphic above is linked.

8. Responsibilities

Response Mission Area			
Core Capability	Critical Task I.D.	Activity/Action	Organization(s) Name
Environmental Response/Health & Safety	2, 3	Coordinate the response for provision of care to mass mortality livestock and any other agriculture related animals.	Yakima Health District (YHD)
			Washington State Department of Ecology

EMERGENCY SUPPORT FUNCTION
11: AGRICULTURE & NATURAL RESOURCES

Response Mission Area			
Core Capability	Critical Task I.D.	Activity/Action	Organization(s) Name
			Washington State Department of Agriculture
			YVEM
Environmental Response/Health & Safety	3	Generate local contact list of rendering facilities, carbon source (e.g. wood chips) suppliers, transportation haulers, and any other animal mortality-related organizations.	YVEM
			YHD
Critical Transportation	2	Coordinate clear routes for animal disposal, stabilize the incident, transition into recovery for an affected area, and restore basic services and community functionality.	YVEM
Logistics & Supply Chain Management	1, 2	Coordinate resource needs, and determines and resolves, as necessary, issues regarding resource shortages and resource ordering issues.	All Primary Organizations
Logistics & Supply Chain Management	1	Assist with providing volunteers, resources and equipment to conduct large animal rescue and evacuation and in procuring veterinary services.	Washington State University (WSU) Extension
			YVEM
Situational Assessment	1	Obtain an initial situation and damage assessment through established intelligence procedures; determines the appropriate management response to meet the request for assistance.	All Primary Organizations
Situational Assessment	2	Activities focused on gathering and delivering information to engage partner organizations/agencies related to response and the transition into recovery.	All Primary Organizations