

EMERGENCY SUPPORT FUNCTION
13: PUBLIC SAFETY, LAW ENFORCEMENT, & SECURITY

Coordinating:

Yakima Valley Emergency Management (YVEM)

Primary(s):

Yakima County Sheriff’s Office
Municipal Police Departments

Supporting:

Central and Southeastern Washington American Red Cross (ARC)
Fire Services—Fire Districts and Municipal Fire Departments
Ground Transportation – Public and Private
Municipal Public Works
People for People
Public Safety Dispatch Centers
Yakima Humane Society/ Yakima Sheriff’s Office Animal Control
Yakima Valley Emergency Management (YVEM)
Yakima County
 Department of Corrections
 Prosecuting Attorney’s Office/Legal
 Public Services

Other Emergency Support Functions (ESFs) or Recovery Functions exist that coordinate with or support this ESF:

- On the ESF Core Capabilities Matrix, find Primary core capabilities (P) within this ESF and then move vertically and add all Supporting (S) core capabilities and equate them to ESFs.
- Next find all Supporting (S) ESFs in the column and then move horizontally along each row of a Supporting (S) core capability to find all Primary (P) ESFs.

ESF 1	ESF 3	ESF 4	ESF 5	ESF 8	ESF 9	ESF 10	ESF 15	Public Info & Warning
Response								Recovery
Supports								
ESF 13								

1. Purpose

- 1.1. Emergency Support Function #13 – Public Safety, Law Enforcement, and Security provides for coordination and guidance of public safety and security capabilities and resources to support the full range of incident management activities including evacuation and movement of population (people and/or animals) stricken by, or threatened by, a disaster to locations providing relative safety and shelter.

Primary and Support Core Capability
Shared Response and Recovery Mission Areas

EMERGENCY SUPPORT FUNCTION
13: PUBLIC SAFETY, LAW ENFORCEMENT, & SECURITY

Primary and Support Core Capability	
Public Information and Warning	Deliver coordinated, prompt, reliable, and actionable information to the whole community through the use of clear, consistent, accessible, and culturally and linguistically appropriate methods to effectively relay information regarding any threat or hazard and, as appropriate, the actions being taken, and the assistance being made available.

Primary Core Capabilities	
Response Mission Area	
Planning	Conduct a systematic process engaging the whole community as appropriate in the development of executable strategic, operational, and/or tactical-level approaches to meet defined objectives.
Operational Coordination	Establish and maintain a unified and coordinated operational structure and process that appropriately integrates all critical stakeholders and supports the execution of Core Capabilities.
On-scene Security, Protection, & Law Enforcement	Ensure a safe and secure environment through law enforcement and related security and protection operations for people and communities located within affected areas and also for response personnel engaged in lifesaving and life-sustaining operations.

Support Core Capabilities	
Response Mission Area	
Critical Transportation	Provide transportation (including infrastructure access and accessible transportation services) for response priority objectives, including the evacuation of people and animals and the delivery of vital response personnel, equipment, and services into the affected areas.
Fire Management & Suppression	Provide structural, wildland, and specialized firefighting capabilities to manage and suppress fires of all types, kinds, and complexities while protecting the lives, property, and environment in the affected area.
Mass Search & Rescue Operations	Deliver traditional and atypical search and rescue capabilities, including personnel, services, animals, and assets to survivors in need, with the goal of saving the greatest number of endangered lives in the shortest time possible.
Situational Assessment	Provide all decision makers with decision-relevant information regarding the nature and extent of the hazard, any cascading effects, and the status of the response.

2. Authorities/Policies

- 2.1. Under emergency or disaster conditions, public safety activities are the responsibility of the law enforcement agency within each governmental jurisdiction. In unincorporated areas of Yakima County, the Sheriff will exercise authority.

EMERGENCY SUPPORT FUNCTION
13: PUBLIC SAFETY, LAW ENFORCEMENT, & SECURITY

- 2.2. In most incident situations, local jurisdictions have primary authority and responsibility for law enforcement activities, utilizing the Incident Command System on-scene. In larger-scale incidents, additional resources should first be obtained through the activation of mutual aid agreements with neighboring jurisdictions and/or State authorities, with incident operations managed through a Unified Command structure.
- 2.3. [WAC 118-30-060 – Emergency Plan](#) (section 2. g.): Each political subdivision shall maintain a current plan of operations which shall be based on a hazard analysis and shall include a functional description of how operational components will be addressed, including evacuation and movement.
- 2.4. While an Incident Commander and chief elected officials have the authority to order an evacuation, in the State of Washington, no one can force an adult property owner to leave their property.
- 2.5. [RCW 38.52.010\(5\)](#) states that “emergency management” or “comprehensive emergency management” does not mean preparation for emergency evacuation or relocation of residents in anticipation of nuclear attack. This ESF is not an attempt to circumvent the intent of the RCW. Rather, it is to alert local jurisdictions to participate in the mitigation, preparedness, response, and recovery emergency management activities, associated with evacuation and recovery, other than a nuclear attack.

3. Situation Overview

- 3.1. During emergencies, police services must be expanded to provide the increased protection required by disaster conditions. Adequate law enforcement resources and services will often be available through existing mutual aid agreements and, if municipal capabilities become overtaxed, support can be provided by the county and augmented by state, federal and tribal law enforcement.
- 3.2. The resources of any department or agency will be under the administrative control of their respective agency and under operational control of the Incident Commander according to the layout of the incident command structure.
- 3.3. Local law enforcement agencies share mutual aid agreements and will cooperate according to parameters set forth in such documents.
- 3.4. Upon the declaration of an emergency by the governor, the National Guard may be available to augment municipal police forces.
- 3.5. Anticipated demand for police services may require coordinating agencies to effectively allocate resources. During emergency operations, law enforcement resources may be in short supply. Transportation routes may be damaged or destroyed requiring close coordination between municipal police, WSP and Washington State Department of Transportation (WSDOT).

EMERGENCY SUPPORT FUNCTION
13: PUBLIC SAFETY, LAW ENFORCEMENT, & SECURITY

- 3.6. Yakima Valley Emergency Management (YVEM) and/or Yakima County EOC may be activated and assist with evacuation coordination.
- 3.7. The American Red Cross serving Central and Southeastern Washington (ARC) will be the coordinating agency for sheltering and feeding evacuees. (See ESF 6 – Mass Care, Housing, and Human Services)
- 3.8. An emergency or disaster could require the evacuation of many people and/or animals in or near a threatened or stricken area. The operation of a major evacuation may be difficult, especially in rural areas, due to compromising factors like the isolation of an area, the difficulty of providing adequate and timely warning and limited transportation routes and capabilities. Operations could be further complicated for those individuals with Access and Functional Needs or Limited English Proficiency.

4. Concept of Operations

- 4.1. Emergency law enforcement operations will be an expansion of normal functions and responsibilities. These responsibilities will include maintenance of law and order, traffic control, and crowd control.
- 4.2. Law enforcement service organizations are to keep the Yakima County EOC informed of changes in law enforcement resource availability or law enforcement service requirements in their jurisdiction. Coordination among law enforcement units will be affected through the Yakima County EOC.
- 4.3. As local law enforcement resources are exhausted, supplementary resource assistance will be obtained from any other municipalities through mutual aid agreements, Yakima County departments, other ESFs, and then through state emergency management channels.
- 4.4. Requests for resources will be prioritized, and resources may be allocated and deployed in mission assignments. Missions will be tracked, and resources will be reassigned as they become available for subsequent uses.
- 4.5. It is critical that evacuation information for the public is timely and accurate. The Emergency PIO or Joint Information Center (JIC) will be kept informed of all relevant information. All public warnings and announcements about an evacuation will be made through the appropriate public safety agency jurisdiction, and/or after coordination with the JIC and the Yakima County EOC. (See ESF 15 – Public Affairs)
- 4.6. Support search and rescue operations
- 4.7. Continue monitoring situation(s) for law enforcement needs and assistance.
- 4.8. Maintain contact with established dispatch centers to coordinate resources and response personnel.

EMERGENCY SUPPORT FUNCTION
13: PUBLIC SAFETY, LAW ENFORCEMENT, & SECURITY

4.9. Evacuation levels have been established as follows:

Level 1 (Be Ready)

- The public is warned of a projected threat to their area. Preparation and precautionary movement of persons with special needs, mobile property, and pets/livestock.

Level 2 (Be Set)

- A significant safety risk exists to your area and the public should be set to evacuate at moment's notice.

Level 3 (Go)

- Current conditions present immediate threat(s) to life and safety within this area. The public should evacuate now.

- 4.10. Evacuation of people from certain areas to prevent injury and/or death is sometimes an appropriate protective action. These areas may include those directly affected and those that may be potentially affected by the event.
- 4.11. Consideration should be given to the potential safety gained by moving the people as opposed to the risk posed by the hazard, the warning time available and the time available to evacuate. (Situations will occur in which sheltering in place will be the safest option.) Evacuation is to be considered a round-trip process. Immediate planning should include people being informed as they are being evacuated, security of the area(s) while evacuated, and a plan in place to allow them to return.
- 4.12. Direction and control of evacuation is exercised primarily on-scene. Mechanical considerations of evacuation are outlined in this and other ESFs (i.e. mass care, transportation, etc.). Social processes and economic consequences should also be considered. A local Emergency Proclamation should be considered to ease implementation and enforcement of the evacuation process.
- 4.13. The actual message to citizens requesting they evacuate should be clear and concise:
- 4.13.1. Contain specific information as to the hazard and the specific risk
 - 4.13.2. Where citizens are supposed to go
 - 4.13.3. What routes they should take
 - 4.13.4. What provisions have been made for shelter

4.14. **Whole Community Involvement**

**EMERGENCY SUPPORT FUNCTION
13: PUBLIC SAFETY, LAW ENFORCEMENT, & SECURITY**

- 4.14.1. Jurisdictional law enforcement departments reach out to their entire communities through community policing, including home, personal property, and personal safety tips/checklists. The community policing philosophy focuses on citizen involvement as an integral part of the solution to crime problems. Police departments across the state are adopting this philosophy in one form or another and beginning to work hand in hand with individuals, National Night Out, block watch organizations, crime stoppers, and other community groups to attack the root cause of crime. Yakima Valley Emergency Management physically and electronically distributes outreach material on evacuation levels and preparing oneself and families for emergencies.
- 4.14.2. The Whole Community includes populations with individuals with disabilities and Access and Functional Needs (AFN). Any agency or organization that receives federal funding is required to have a plan or policy for addressing the needs of individuals with Limited English Proficiency (LEP), pursuant to Title VI, the Civil Rights Act. The Washington State Emergency Management Division and this ESF expects all agencies and organizations to comply with federal law. For more information on how each agency or organization complies with federal law, please contact the individual agency or organization.

Mission Area	Critical Task I.D.	Critical Tasks
Planning		
Response	1	Develop operational plans that adequately identify critical objectives based on the planning requirement, provide a complete and integrated picture of the sequence and scope of the tasks to achieve the objectives, and are implementable within the timeframe contemplated in the plan using available resources.

Mission Area	Critical Task I.D.	Critical Tasks
Public Information and Warning		
Response	1	Inform all affected segments of society of critical lifesaving and life-sustaining information necessary, including accessible tools, to expedite the delivery of emergency services and aid the public to take protective actions.
	2	Deliver credible and actionable messages to inform ongoing emergency services and the public about protective measures and other life-sustaining actions, and facilitate the transition to recovery.
Recovery	1	Reach all populations within the community with effective actionable recovery-related public information messaging and communications that are accessible to people with disabilities and people with limited English proficiency; protect the health and safety of the affected population; help manage expectations; and ensure stakeholders have a clear understanding of available assistance and their roles and responsibilities.

EMERGENCY SUPPORT FUNCTION
13: PUBLIC SAFETY, LAW ENFORCEMENT, & SECURITY

Mission Area	Critical Task I.D.	Critical Tasks
Operational Coordination		
Response	1	Mobilize all critical resources and establish command, control, and coordination structures within the affected community, in other coordinating bodies in surrounding communities and neighboring counties and maintain as needed throughout the duration of an incident.
	2	Enhance and maintain command, control, and coordination structures consistent with the National Incident Management System (NIMS) to meet basic human needs, stabilize the incident, and transition to recovery.

Mission Area	Critical Task I.D.	Critical Tasks
Critical Transportation		
Response	1	Establish physical access through appropriate transportation corridors and deliver required resources to save lives and to meet the needs of disaster survivors.
	2	Ensure basic human needs are met, stabilize the incident, transition into recovery for an affected area, and restore basic services and community functionality.

Mission Area	Critical Task I.D.	Critical Tasks
On-scene Security, Protection, & Law Enforcement		
Response	1	Establish a safe and secure environment in an affected area.
	2	Provide and maintain on-scene security and meet the protection needs of the affected population over a geographically dispersed area while eliminating or mitigating the risk of further damage to persons, property, and the environment.

Mission Area	Critical Task I.D.	Critical Tasks
Fire Management & Suppression		
Response	1	Provide traditional first response or initial attack firefighting services.
	2	Conduct expanded or extended attack firefighting and support operations through coordinated response of fire management and specialized fire suppression resources.
	3	Ensure the coordinated deployment of appropriate local, regional, national, and international fire management and fire suppression resources to reinforce firefighting efforts and maintain an appropriate level of protection for subsequent fires.

Mission Area	Critical Task I.D.	Critical Tasks
Mass Search & Rescue Operations		
Response	1	Conduct search and rescue operations to locate and rescue persons in distress.

EMERGENCY SUPPORT FUNCTION
13: PUBLIC SAFETY, LAW ENFORCEMENT, & SECURITY

Mission Area	Critical Task I.D.	Critical Tasks
Mass Search & Rescue Operations		
	2	Initiate community-based search and rescue support operations across a wide, geographically dispersed area.
	3	Ensure the synchronized deployment of local, regional, and potentially national (USAR) teams to reinforce ongoing search and rescue efforts and transition to recovery.

Mission Area	Critical Task I.D.	Critical Tasks
Situational Assessment		
Response	1	Deliver information sufficient to inform decision making regarding immediate lifesaving and life-sustaining activities, and engage governmental, private, and civic sector resources within and outside of the affected area to meet basic human needs and stabilize the incident.
	2	Deliver enhanced information to reinforce ongoing lifesaving and life-sustaining activities, and engage governmental, private, and civic sector resources within and outside of the affected area to meet basic human needs, stabilize the incident, and transition to recovery.

5. Organization

- 5.1. The ESF #13 position is staffed by the appropriate jurisdiction’s law enforcement agency. The ESF #13 position, when activated, operates in the Yakima County EOC and is a member of the Operations Section reporting to the Operations Section Chief. This position is the link to law enforcement operations in the field.

- 5.2. The ESF #13 position provides subject-matter expertise to other EOC positions. Based on potential need, this ESF may operate on a 24-hour basis. Supporting agencies have representatives available at the county EOC or by telephone, text, or email on a 24-hour basis while ESF #13 is operational.

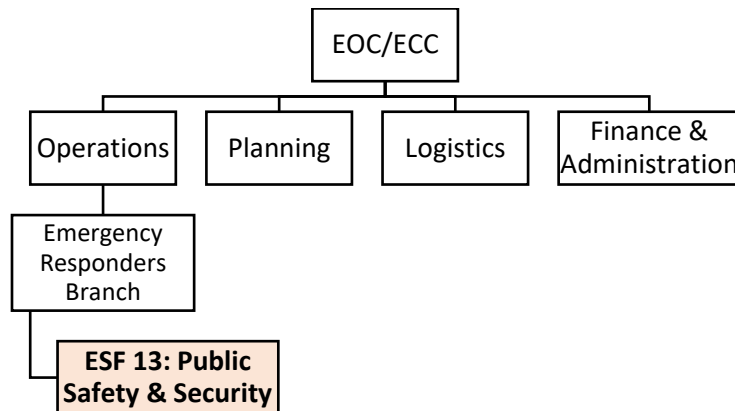


Figure 1: YCEOC, ESF #13, Organizational Chart Example

EMERGENCY SUPPORT FUNCTION
13: PUBLIC SAFETY, LAW ENFORCEMENT, & SECURITY

- 5.3. Precautionary evacuations may be authorized by the Chief Elected Official, or designee while emergency evacuations may be authorized by the following:
- 5.3.1. Incident Commander
 - 5.3.2. Sheriff or Police Chief
 - 5.3.3. Fire Chief
 - 5.3.4. Health Officer, or designee
- 5.4. Anticipate that people may be hesitant to evacuate and may seek confirmation of the evacuation request from neighbors, friends and relatives. Research has shown incentives exist which can be provided to people to encourage them to leave. These include the following:

Incentives to Encourage People to Leave During an Evacuation Situation
• Evacuation request should be made by elected officials or other recognized authority
• Contact should be made by uniformed personnel
• Information should be provided as to the exact nature of the threat
• The evacuation request should be disseminated from multiple sources if possible
• Assurances should be provided of security and property protection
• Provisions for alternative emergency transportation should be provided, if needed
• Provisions for reducing family separation anxiety, such as information about schools (if involved) should be considered
• Provisions for pets should be considered
• Provide information as to what exactly is expected of the citizens in the threatened area
• Ensure that messages from the field and official sources are consistent
• Provide an avenue for evacuees to obtain updates

6. Direction, Control, & Coordination

- 6.1. ESF #13 is organized in accordance with the National Response Framework (NRF).
- 6.2. Horizontal Integration – This annex is concerned with the Response Mission Area. It is an interagency plan that provides direction to county government entities concerned with responding to public safety, law enforcement, and/or security-related issues following a disaster.
- 6.2.1. The emergency management staff and mutual aid coordinators mobilize available resources within the Yakima County operational area, request additional resources through the State EOC, and provide overall situation information to local jurisdictions.
- 6.3. Vertical Integration - This ESF Annex should integrate vertically to state and federal response plans at the regional and national level, as well as city/town plans at the local level. It may be common for relevant federal, state and local plans to be similarly titled around ESF #13; however, this annex should remain flexible to coordinate with other plans or bodies that align with the Core Capabilities and Critical Tasks listed in this annex.

**EMERGENCY SUPPORT FUNCTION
13: PUBLIC SAFETY, LAW ENFORCEMENT, & SECURITY**

6.3.1. Integration with local (City/Town) Response plans includes: The County recommends local governments develop and maintain public safety, law enforcement, and/or security-related response plans to assist with response integration efforts.

6.3.2. Integration with State and Federal Response plans includes: The Response Federal Interagency Operational Plan (FIOP) and the Washington State Comprehensive Emergency Management Plan.

7. Information Collection, Analysis, & Dissemination

7.1. Information collection regarding public safety, law enforcement, and/or security-related services status will be coordinated through ESF #13 and the YCEOC or other designated point as appropriate to the incident.

7.2. The local Incident Commander (IC) or designee is responsible for providing situation reports and periodic updates to keep the YCEOC informed. YCEOC or designee shall provide situation reports to local support agencies/jurisdiction ECCs and the Washington State Emergency Management Division (WAEMD) – State Emergency Operations Center (SEOC) as appropriate.

7.3. Jurisdiction, agency, private-sector, non-governmental, and volunteer organization representatives within the YCEOC will assist with meeting the information collection, analysis, and dissemination needs/methods of the JIC and YCEOC. This will include maintaining contact with their local PIOs for reports and updates.

7.4. Some incoming public safety, law enforcement, and/or security-related services information/requests into the YCEOC may require a vetting process through the Policy Group and/or the YCEOC Manager due to legal, policy, ethical, or other concerns.

7.5. The YCEOC will be responsible for collection, analysis, and dissemination of the latest incident information and resources as depicted in Figure 2: YCEOC Information Collection, Analysis, and Dissemination process.

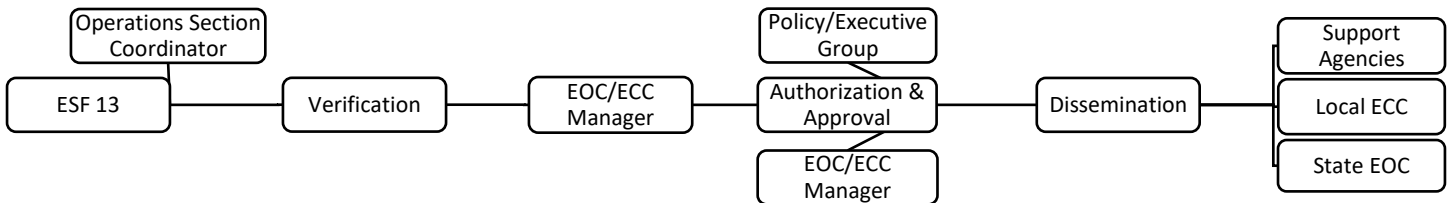


Figure 2: YCEOC Information Collection, Analysis, and Dissemination Process

8. Responsibilities

EMERGENCY SUPPORT FUNCTION
13: PUBLIC SAFETY, LAW ENFORCEMENT, & SECURITY

Response Mission Area			
Core Capability	Critical Task I.D.	Activity/Action	Organization(s) Name
Planning	1	Provide expertise and coordination for security planning efforts.	Yakima Sheriff's Office & Municipal Police Departments
Planning	1	Act as lead agencies in the provision of fire suppression and control, and immediate life safety services within their respective fire jurisdictions and support other fire protection agencies if they are signatories to a mutual aid agreement.	Fire Services
Public Information and Warning	1, 2	Informs and delivers relevant public evacuation information (including limited English proficiency individuals) in facilities where mass care services are provided.	Yakima Sheriff's Office & Municipal Police Departments
			YVEM
			Public Safety Dispatch Centers
Public Information and Warning	1, 2	Informs and delivers relevant public evacuation information (including limited English proficiency individuals) to all people within pre-determined evacuation areas.	Yakima Sheriff's Office & Municipal Police Departments
			YVEM
			Public Safety Dispatch Centers
Public Information and Warning	1, 2	Coordinate public information through ESF #15 (Public Affairs).	YVEM
Operational Coordination	1	Determines the appropriate management response to meet the request for assistance.	Yakima Sheriff's Office & Municipal Police Departments
Operational Coordination	1	Report to the county EOC as soon as possible after notification, conditions permitting.	Yakima Sheriff's Office & Municipal Police Departments
Operational Coordination	1	The ARC will coordinate agreements with potential shelter sites for use on their facilities during an emergency or disaster. (See ESF 6 – Mass Care, Housing and Human Services)	Central and Southeastern Washington ARC
Operational Coordination	2	Establish and maintain an appropriately scaled command, control, and coordination structures consistent with the National Incident Management System (NIMS) and Incident Command System (ICS) to meet basic human needs, stabilize the incident, and transition to recovery through ESF #13.	Yakima Sheriff's Office & Municipal Police Departments

EMERGENCY SUPPORT FUNCTION
13: PUBLIC SAFETY, LAW ENFORCEMENT, & SECURITY

Response Mission Area			
Core Capability	Critical Task I.D.	Activity/Action	Organization(s) Name
Critical Transportation	1	Coordinate route alerting and notification of threatened populations.	Yakima Sheriff's Office & Municipal Police Departments
Critical Transportation	1	Coordinate emergency signs and other traffic barricade devices before, during and after evacuation.	Public Services/Works
Critical Transportation	1, 2	Assist as appropriate with the evacuation of affected citizens by expediting movement of vehicles and pedestrians from the evacuation area.	Yakima Sheriff's Office & Municipal Police Departments
Critical Transportation	1, 2	Support transportation of community members to shelters or evacuation points	People for People
			Private carriers
			School Districts
			Yakima County Public Services
On-scene Security, Protection, & Law Enforcement	1	Coordinate access, traffic, and crowd control in and around affected areas.	Yakima Sheriff's Office & Municipal Police Departments
On-scene Security, Protection, & Law Enforcement	1	Establish a safe and secure environment in and around the correctional institutes should prisoners need to be evacuated.	Yakima County Department of Corrections
On-scene Security, Protection, & Law Enforcement	2	Provide and maintain on-scene security and adequate personnel to meet the protection needs of the affected prison population.	Yakima County Department of Corrections & Municipal Police Departments
On-scene Security, Protection, & Law Enforcement	1, 2	Establish security and protection of critical facilities, including the EOC.	Yakima Sheriff's Office & Municipal Police Departments
On-scene Security, Protection, & Law Enforcement	2	Provide legal counsel as requested during emergencies or disasters.	Yakima County Prosecuting Attorney's Office/Legal

EMERGENCY SUPPORT FUNCTION
13: PUBLIC SAFETY, LAW ENFORCEMENT, & SECURITY

Response Mission Area			
Core Capability	Critical Task I.D.	Activity/Action	Organization(s) Name
Fire Management & Suppression	1	Assist with traditional first response and ambulatory transport as needed.	Fire Services
Fire Management & Suppression	2	Provides technical assistance and advice in the event of fires involving hazardous materials.	Fire Services
Fire Management & Suppression	2, 3	Provides firefighting assistance to other organizations as requested under the terms of existing agreements.	Fire Services
Mass Search & Rescue Operations	1	Assist law enforcement with making notifications to those in the evacuation area of the need to leave the area.	YVEM
			Dispatch Centers
			Yakima Sheriff's Office
Mass Search & Rescue Operations	1, 2	Initiate and conduct the search and rescue effort outside of municipalities that that may be accompanied with the evacuation effort.	Yakima Sheriff's Office
Mass Search & Rescue Operations	1, 2	Initiate and conduct the search and rescue effort within municipalities that that may be accompanied with the evacuation effort.	Fire Services
Situational Assessment	1, 2	Provide for registration and accounting of evacuated persons.	Central and Southeastern Washington ARC
Situational Assessment	1, 2	Provide for registration and accounting of evacuated animals.	Yakima Humane Society/Yakima Sheriff's Office Animal Control
Situational Assessment	1	Deliver situation report information through established intelligence procedures to inform decision making regarding immediate lifesaving and life-sustaining activities.	Yakima Sheriff's Office & Municipal Police Departments
Situational Assessment	1	Deliver situation report and damage assessment information through established intelligence procedures to inform decision making regarding immediate lifesaving and life-sustaining activities.	Public Services/Public Works

Recovery Mission Area			
Core Capability	Critical Task I.D.	Activity/Action	Organization(s) Name
Public Information and Warning	1	Coordinate public information through ESF #15 (Public Affairs) regarding effective actionable	YVEM

EMERGENCY SUPPORT FUNCTION
13: PUBLIC SAFETY, LAW ENFORCEMENT, & SECURITY

		recovery-related repopulation messaging and communications.	
--	--	---	--

9. Resource Requirements

Resources	Providers
Desktop or Laptop	Yakima County EOC (may bring home agency laptop)
WebEOC login	Primary Agency/Organization
Contact list (phone & email) of organizations (master list)	Yakima County EOC or Home Agency/Organization
Internet and folder drive access	Yakima County EOC
Appropriate Home Agency/Org SOPs (hard & soft copies)	Primary Agency/Organization
Desk Phone	Yakima County EOC
Tiered communication structure with Incident Management Teams (IMT)	Yakima County EOC
Two-way Radio	Yakima County EOC or Home Organization
Training	Providers
E/G0191 (Emergency Operations Center/Incident Command System Interface)	Various locations (in-residence)
IS 100, 200, 700, 800	FEMA Emergency Management Institute (online)
ICS 300, 400	Various locations (in-residence)
Position training	Yakima Valley Emergency Management (YVEM)

10. References and Supporting Plans

- 10.1. ESF 1 – Transportation, Yakima County CEMP
- 10.2. ESF 3 – Public Works and Engineering, Yakima County CEMP
- 10.3. ESF 4 – Firefighting, Yakima County CEMP
- 10.4. ESF 5 – Emergency Management, Yakima County CEMP
- 10.5. ESF 8 – Public Health and Medical Services, Yakima County CEMP
- 10.6. ESF 9 – Search and Rescue, Yakima County CEMP
- 10.7. ESF 10 – Oil and Hazardous Materials Response, Yakima County CEMP
- 10.8. ESF 11 – Agriculture and Natural Resources, Yakima County CEMP
- 10.9. ESF 15 – Public Affairs, Yakima County CEMP
- 10.10. [Washington State Comprehensive Emergency Management Plan \(CEMP\)](#) - The CEMP Basic Plan, Emergency Support Functions (ESFs), and Incident Annexes describe specific roles, responsibilities, functions, and support relationships of state agencies. The CEMP also provides a framework for state, local, tribal, and whole community coordination and cooperation supporting response and recovery of local jurisdictions in times of emergencies and disasters.
- 10.11. [Revised Code of Washington \(RCW\) 10.93](#) – Washington Mutual Aid Peace Officers Powers Act

11. Terms and Definitions

- 11.1. [National Response Framework \(NRF\)](#) – The National Response Framework is a guide to how the Nation responds to all types of disasters and emergencies. It is built on scalable, flexible, and

EMERGENCY SUPPORT FUNCTION
13: PUBLIC SAFETY, LAW ENFORCEMENT, & SECURITY

adaptable concepts identified in the National Incident Management System to align key roles and responsibilities across the Nation.

- 11.2. Response Federal Interagency Operational Plan (FIOP) – This FIOP describes how the Federal Government delivers core capabilities for the Response mission area.