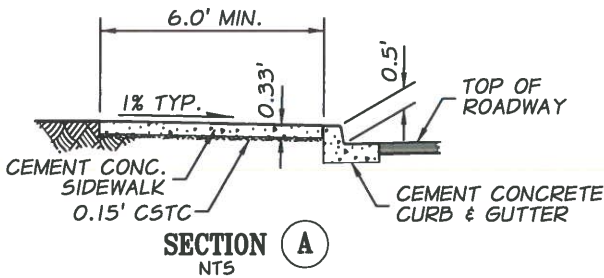


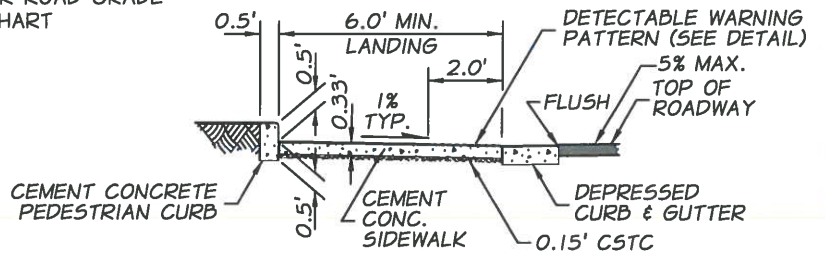
| ROAD GRADE | RAMP LENGTH (12:1) | |
|------------|--------------------|-----------|
| | LOW SIDE | HIGH SIDE |
| ≤ 1% | 6' | 7' |
| 2% | 6' | 8' |
| 3% | 6' | 10' |
| 4% | 6' | 12' |
| ≥ 5% | 6' | 15' |

ISOMETRIC VIEW
NTS

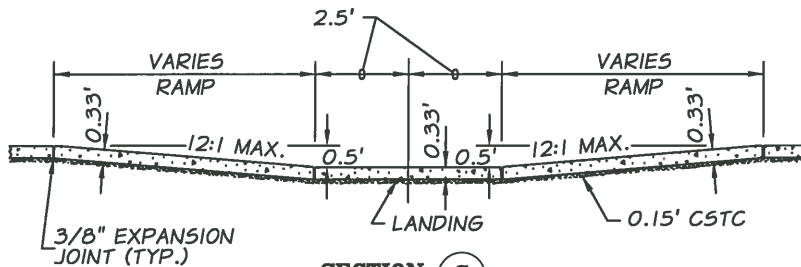
* VARIES FOR ROAD GRADE
SEE CHART



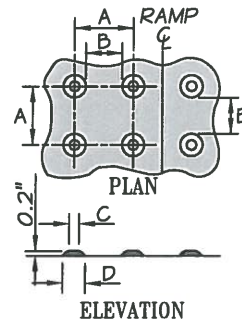
SECTION A
NTS



SECTION B
NTS



SECTION C
NTS



| | MIN. | MAX. |
|---|----------------------|------|
| A | 1.6" | 2.4" |
| B | 0.65" | --- |
| C | 50% to 65% of Bottom | |
| D | 0.9" | 1.4" |

THIS PATTERN AREA SHALL
BE YELLOW IN COLOR

DETECTABLE WARNING PATTERN DETAIL
NTS

NOTES:

- 1) THE BOTTOM OF THE RAMP SHALL HAVE A LEVEL AREA 5'X5' (NOT IN EXCESS OF 2% IN ANY DIRECTION).
- 2) RAMP SLOPES SHALL NOT BE STEEPER THAN 12H:1V.
- 3) AVOID PLACING DRAINAGE STRUCTURES, JUNCTION BOXES OR OTHER OBSTRUCTIONS IN FRONT OF RAMP ACCESS AREAS.
- 4) CURB AND GUTTER IS SHOWN. SEE CONTRACT PLANS FOR THE CURB DESIGN SPECIFIED.
- 5) SEE WSDOT STANDARD PLAN F-45.10-01 FOR ADDITIONAL DETAILS.

SIDEWALK RAMP LAYOUT PARALLEL A



APPROVED BY: [Signature] DATE: 5/14/15
County Engineer: _____

| REVISION: | DESCRIPTION: | DATE: |
|-----------|--------------|-------|
| | | |
| | | |
| | | |

STANDARD PLAN
S-4
SHEET 1 OF 1
FILE NAME: