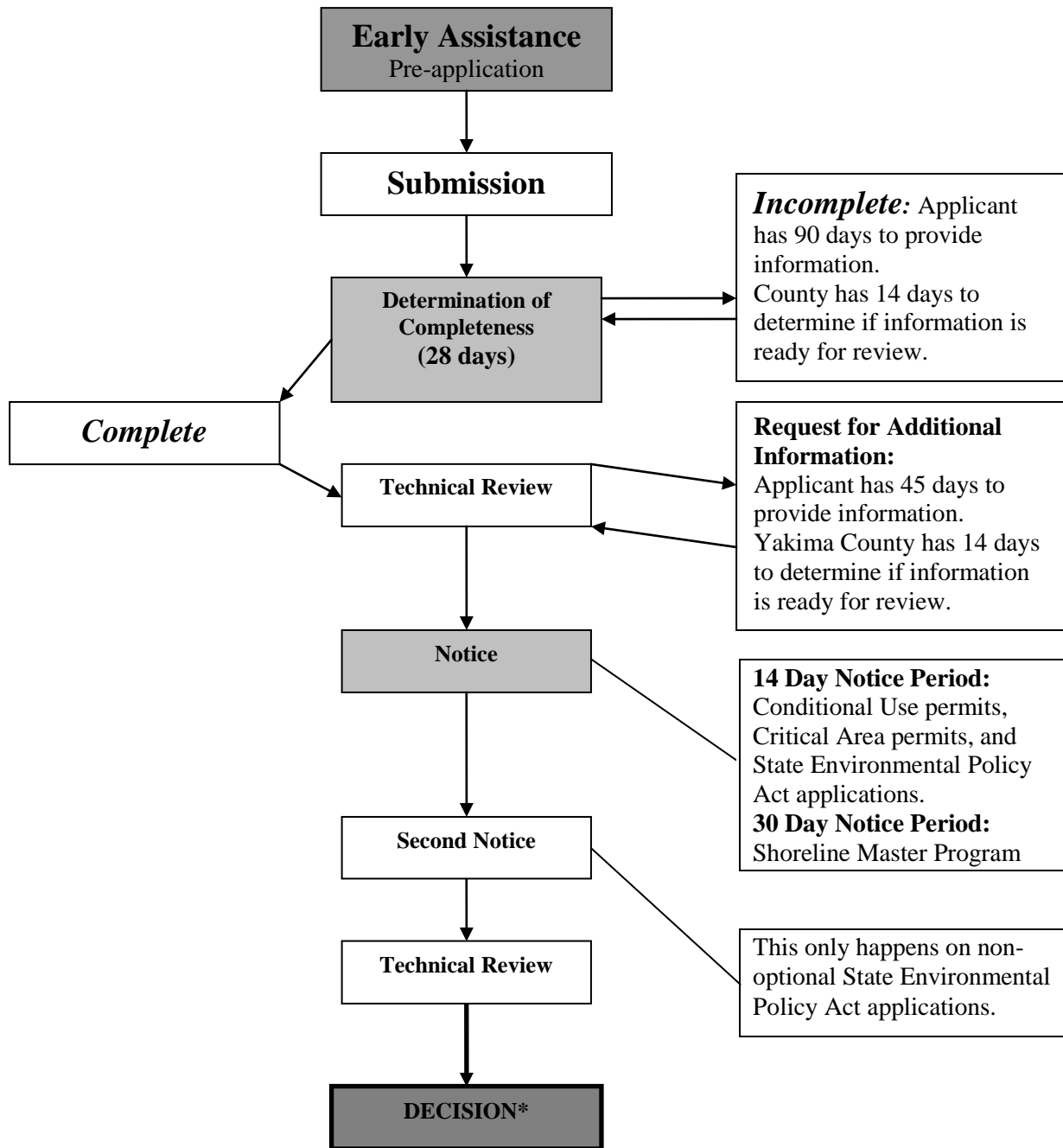




# General Land Use Process Information

Form # PLN 003 I2-A  
Revised 1/7/13

Yakima County Public Services  
128 North Second Street · Fourth Floor Courthouse · Yakima, Washington 98901  
(509) 574-2300 · 1-800 572-7354 · FAX (509) 574-2301 · [www.co.yakima.wa.us](http://www.co.yakima.wa.us)



\*There are 14 days to appeal to Yakima County on all Land Use Permits. In addition:  
1) Shoreline Substantial Development Permits go through another 21 day appeal period with Ecology; 2) Shoreline Variances and Shoreline CUPs, once sent to Ecology, go through a 30 day review period where Ecology will approve, approve with conditions, or deny the permit (then, they too go through the 21 day appeal period).