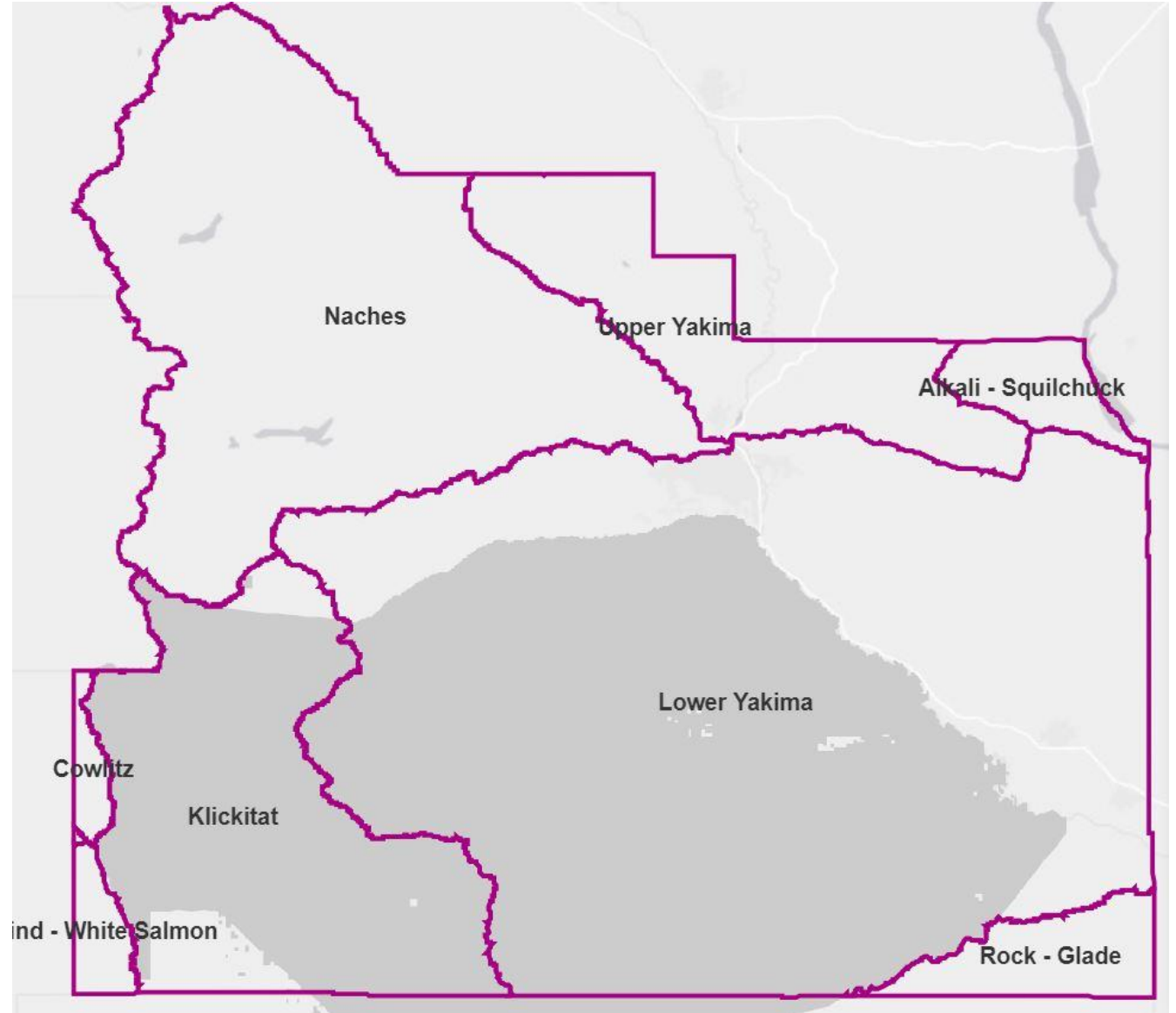


Yakima VSP Work Group

March 23, 2021



5-Year Report

Process

- Tech Panel Review
- Tech Panel Public Meeting
- Statewide Advisory Committee consult with Director of SCC

Schedule

- Comments received 3/18
 - Gather questions for individual Tech Panel Members
- Tech Panel & SAC meeting
 - June 10th 8-11 am

Early Comment Themes

- Partial agreement
- Desired more information
 - In field verification of remote sensing/tracking tool info
 - More direct connections with producers
 - Saw substantial implementation of practices and would like more connection to overall critical area conditions (e.g. water quality)
 - Suggestions / limitations on data (e.g. riparian, fish passage, pollinators)
- Support the adaptive management on enhancement in some basins

- Counties Submitting Reports as of Last week
- Several identified adaptive management
- Only three have been reviewed at a public meeting
- Even with mixed comments, SAC recommended to Director the counties should continue

Summary of Completed 5-Year Reports

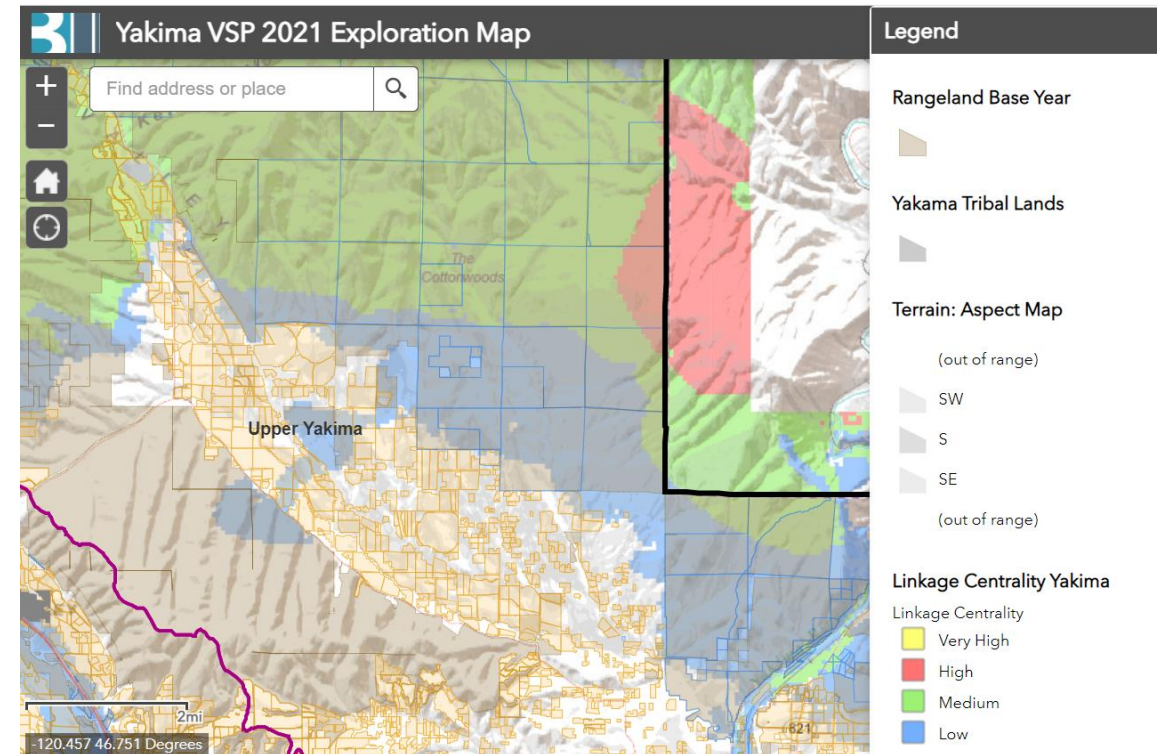
County	5-Year Report Assertions	Adaptive Management Plan?	Technical Panel/ Statewide Advisory Committee
Asotin	Protection & enhancement met		n/a
Benton	Protection met, enhancement not met	Yes (enhancement)	n/a
Columbia	Protection & enhancement met		n/a
Cowlitz	Protection & enhancement met		
Douglas	Protection & enhancement met	Yes (enhancement)	n/a
Ferry	Protection & enhancement met		
Franklin	Protection & enhancement met	Yes (enhancement)	n/a
Garfield	Protection & enhancement met		Recommend concur (Tech Panel well supported)
Grant	Protection & enhancement met		n/a
Kittitas	Protection & enhancement met		Recommend concur (Tech Panel mixed results)
Mason	Protection met, enhancement not met	Yes (enhancement)	Recommend concur (Data/analytic hurdles)
Okanogan	Protection & enhancement met	Yes (protection for 1)	n/a
Pacific	Protection & enhancement met	Yes (protection and enhancement)	n/a
Pend Oreille	Protection & enhancement met		n/a
San Juan County	Protection not met, enhancement not met	Yes (protection and enhancement)	n/a
Stevens	Protection & enhancement met		n/a
Walla Walla	Protection & enhancement met	Yes (protection and enhancement)	n/a
Whitman	Protection & enhancement met		n/a
Yakima	Protection & enhancement met	Yes (enhancement)	n/a

Potential Questions for Tech Panel

Adaptive Management for Enhancement

- Property Owner list to contact
- Checklist of questions for producers
- NRCS / EKCD/ CKCD Follow Up
 - Couple of practices in Rock Glade – determining location with spatial data
 - Some practices / joint efforts in the works with SYCD
- Shrub-Steppe
 - identify parcels with south facing slopes and habitat corridor
 - DNR – Contact about field assessments
 - SCC – Discuss approach

- Alkali Squilchuck
- Klickitat
- Rock Glade
- Upper Yakima



Prioritize Parcels -
South Facing,
Private, Along
Habitat Corridor



Contact Owners and
Identify
Interest/Need



Schedule
Assessment
(DNR EIA Manual)



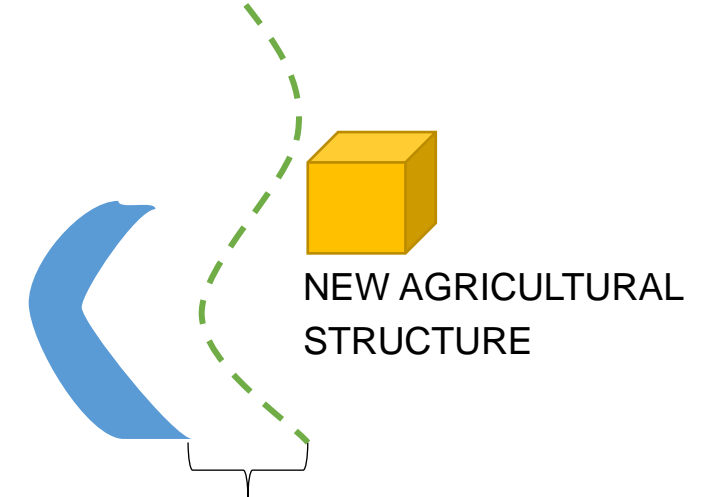
Management
Recommendations /
Conservation
Practices

Definition of Agriculture

Draft Update to Policy Advisory

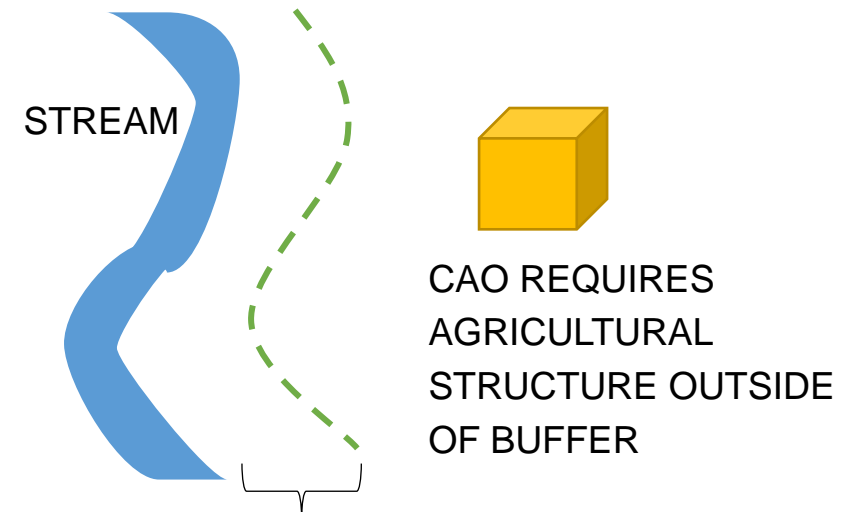
- Scenarios and Diagrams Added
- Can provide feedback to Tech Panel before 3/25

EXISTING AGRICULTURAL LAND OR LAND PREVIOUSLY USED FOR AGRICULTURE



50' BUFFER WOULD BE NOT REQUIRED

NON-AGRICULTURAL LAND AT INITIAL CONVERSION



CAO REQUIRES A 50' BUFFER

Cost Shares

Proposed Cost Shares – SYCD

- This biennium spring 2021 start – 3 mile, 33-acre green strip planting west of Hwy 241 within the Black Rock Priority Landscape area with biologist.
- Next biennium start in fall 2021 – partnership with Central Klickitat CD partnership and landowner – Spring Development, Cattle Exclusion- watering structure (north of Glenwood).

Work Group

- Motion authorizing VSP funds