

2022 Spotlight



Building Resilient and Inclusive
Communities (BRIC)
and
Supplemental Nutrition Assistance
Program and Education (SNAP-Ed)

Today's Presentation

- What is SNAP-Ed?
- PSE Overview
- Past and Present Work
- What is BRIC?
- Projects
 - Heritage Connectivity Trail
 - William O. Douglas Trail
 - Yakima Greenway

What is SNAP-Ed

Supplemental Nutrition Assistance Program Education

Direct Education



Health Promotion



PSE



PSE Overview

Policy, Systems and Environmental approaches



Policy



Systems



Environmental

Past and Present

Supplemental Nutrition Assistance Program Education

2008-2012 SNAP-Ed Work

- Direct Education
- PSE

Current SNAP-Ed Work

- PSE
- Health Promotion

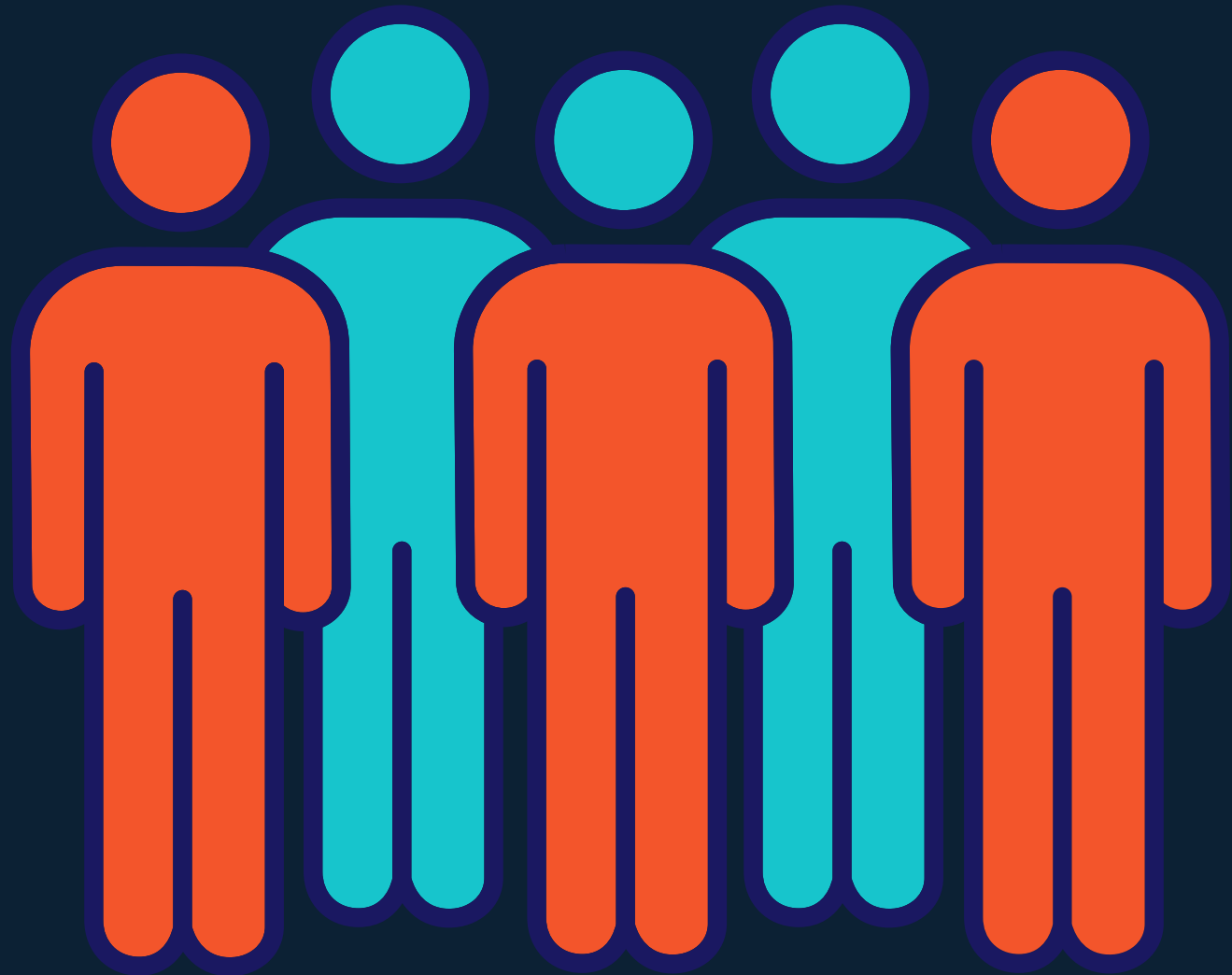
2015-2017 SNAP-Ed Work

- PSE
- Health Promotion



Building Resilient Inclusive Communities (BRIC)

Task Forces and Coalitions



Environmental Improvements

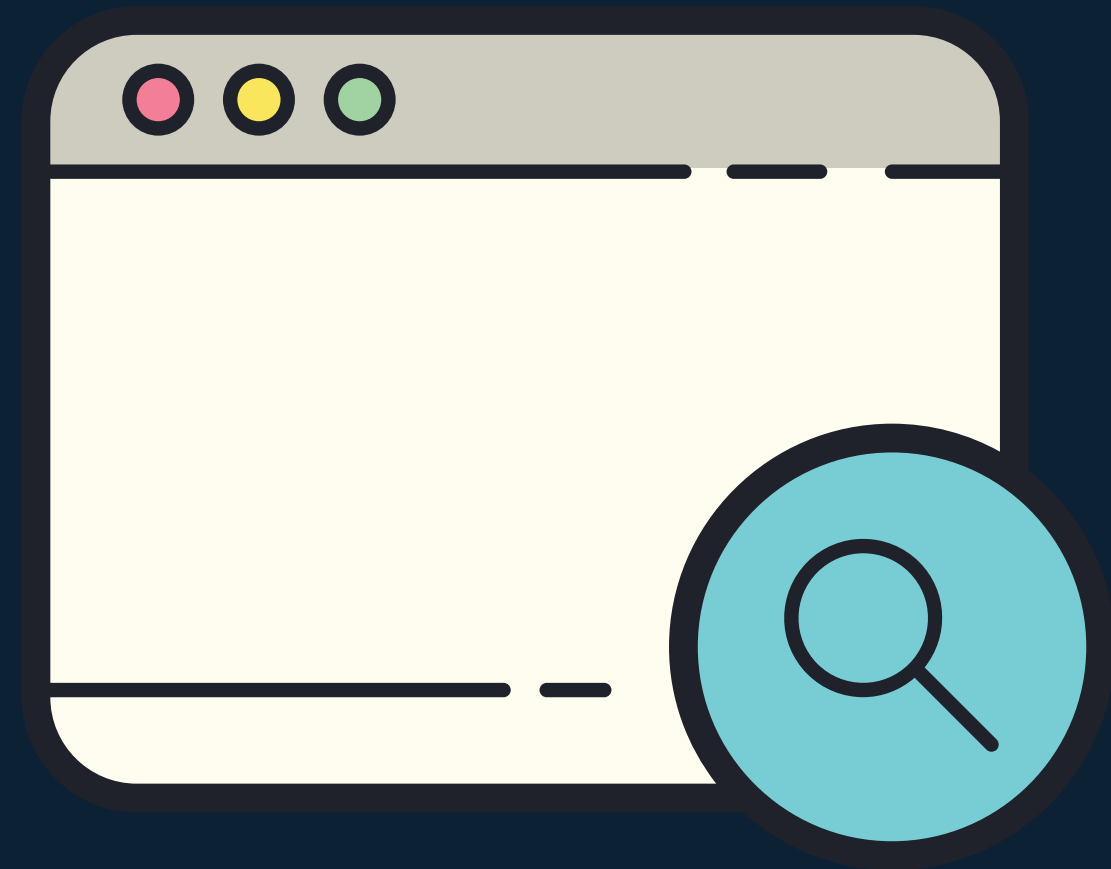


Heritage Connectivity Trail

Multi-Agency Partnership

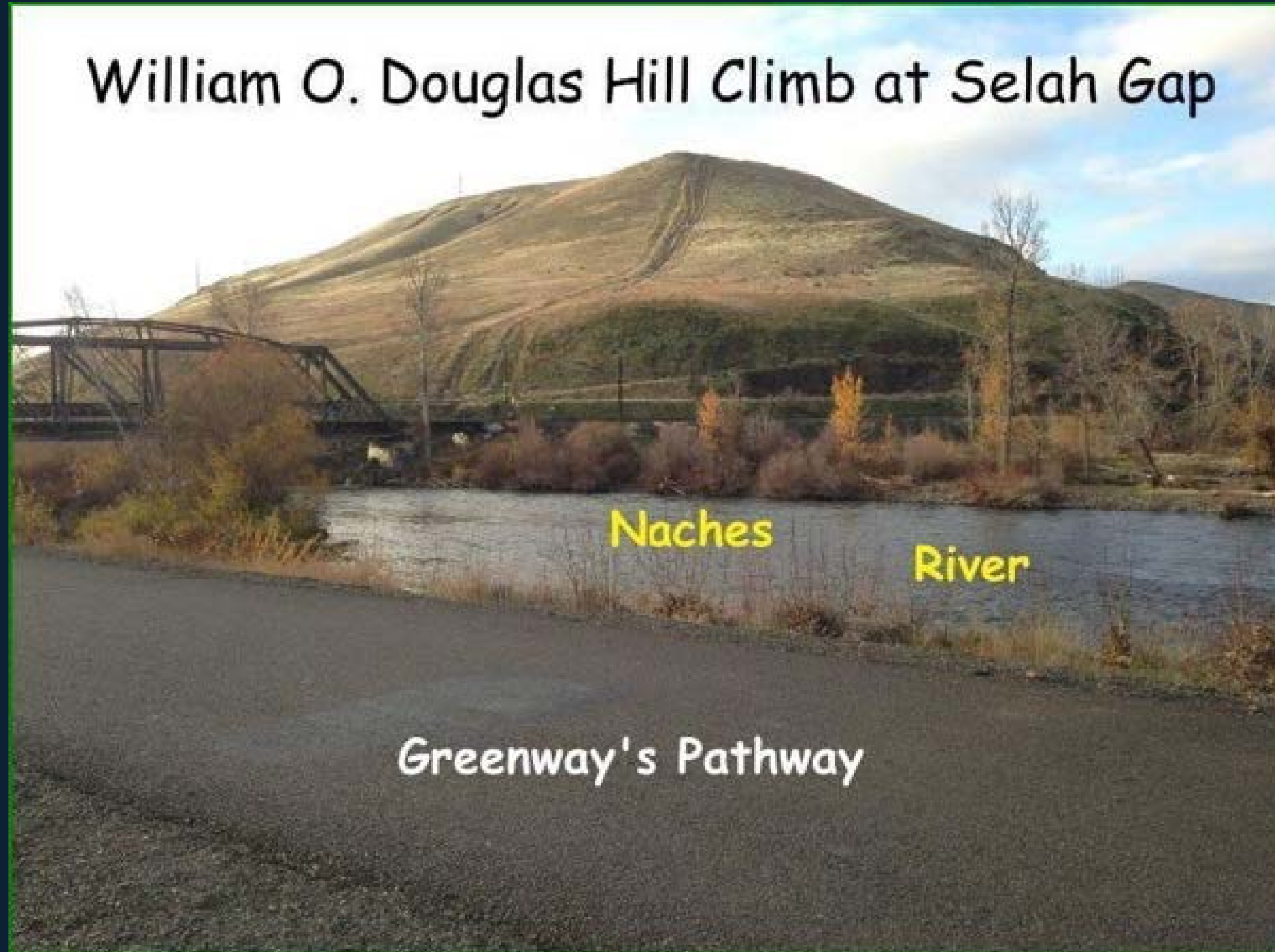


Educate and Advocate



William O. Douglas Trail

William O. Douglas Hill Climb at Selah Gap



Naches

River

Greenway's Pathway

Yakima Greenway

- Community Survey
- Trail Assessment
- Increasing attractiveness of PA environment (Wayfinding signs & picnic tables)



Strategic Goals

- **Deliver mandated services**
- **Develop a network of community partners invested in improving public health**
- **Increase the effectiveness and efficiency of district services**

Questions?
