

Yakima County Treasurer

A Report to Our Citizens

Fiscal Year 2022

Ilene Thomson, Yakima County Treasurer

How the Office Operates

The County Treasurer's Office acts as the bank for the County departments, school districts, fire districts, special purpose districts and other units of local government, by receipting, disbursing, investing, and accounting for the funds of each of these entities. The Treasurer's Office is also charged with the collection of various taxes that benefit a wide range of governmental functions.

Some of the major responsibilities of the Treasurer's Office is as follows:

- Receipting and Accounting of Revenue
- Billing and Collection of Taxes and Assessments
- Disbursement of Funds
- Debt Management
- Cash and Investment Portfolio Management
- Banking Services
- Real Property/Mobile Home Transfers
- Real and Personal Property Foreclosure
- Property Tax Adjustments and Refunds

Demographics	Yakima County
Estimated Population	259,950
Median Household Income	\$57,040
Median Age	32.9
Parcel Count	109,774
Labor Force Participation	62.1%

Sources: MRSC/WA OFM

Table of Contents

TIP Market Values

TIP Interest Earnings

TIP Historical Performance vs Benchmarks...2

Property Tax & Assessment Distribution

Property Tax & Assessment Collection

Performance Measures

Major Expenses.....3

Accomplishments

Looking Ahead4

Mission Statement

To prudently handle and manage the public funds that have been entrusted to our care, to serve the taxpayers and our business partners with respect and professionalism, and to provide accurate financial reporting services.

Contact Us

128 N Second St., Room 115, Yakima

PO Box 22530, Yakima WA 98907

www.yakimacounty.us/treasurer

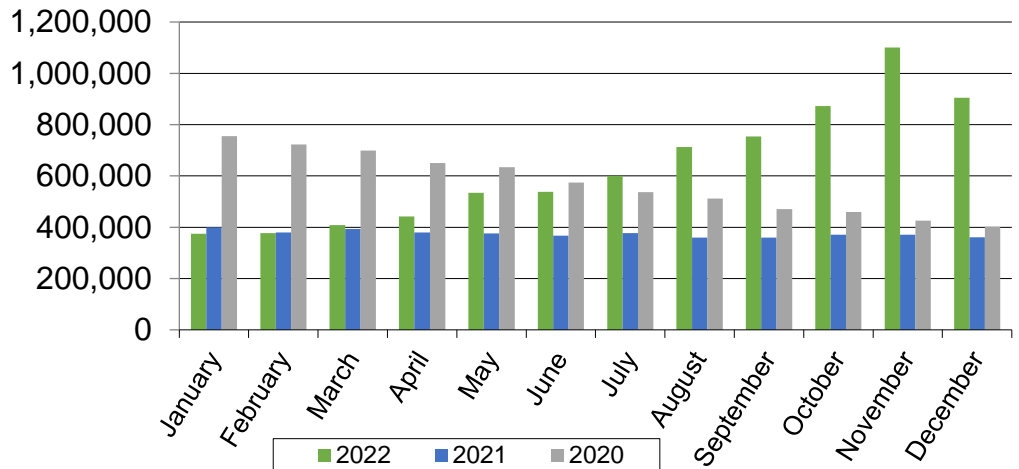
(509) 574-2800 Tax Information

(509) 574-2780 Accounting Division

County Treasurer's

Investment Pool Portfolio

This comparison of Interest Earnings shows the performance of the TIP in generating additional revenue for the districts and departments within Yakima County. The amount generated in 2022 was \$7,618,286 compared to \$4,493,542 in 2021; an increase of earnings in the amount of \$3,124,744.



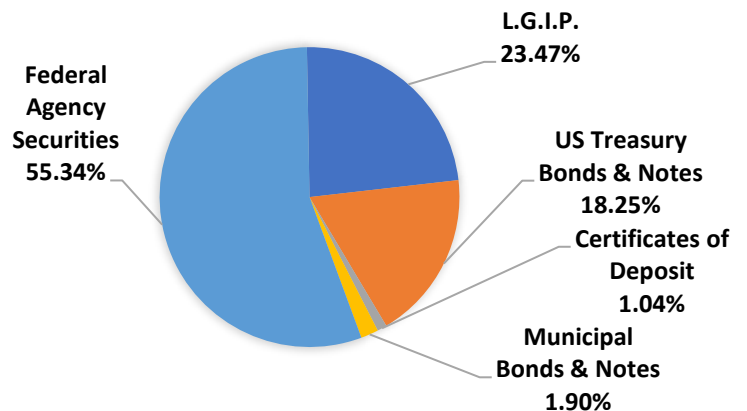
Treasurer's Investment Pool

Asset Allocation

This graph is a breakdown of fair market values by types of securities in which the pool is invested in as of the end of the fiscal year.

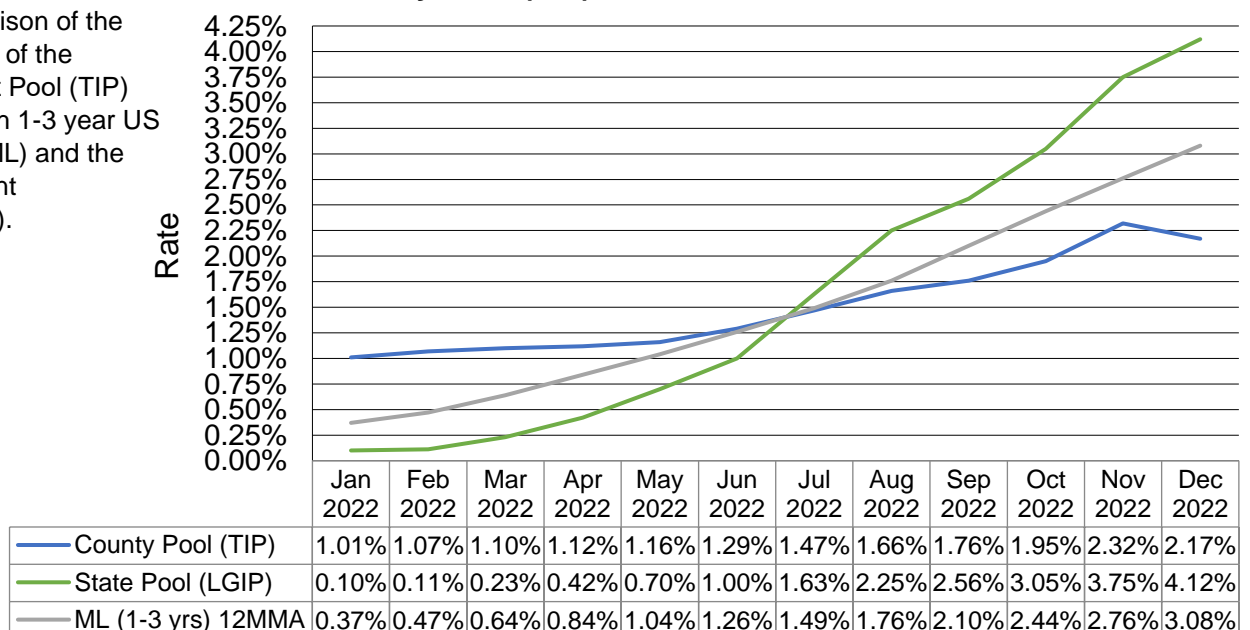
	2022	2021
LGIP	23.47%	28.11%
US Treas	18.25%	16.34%
CD	1.04%	2.19%
Municipal Bonds	1.90%	2.48%
Fed Agency	55.34%	50.88%

Treasurer's Investment Portfolio Market Values



Pool Interest Rate Comparison

This graph is a comparison of the monthly earnings rates of the Treasurer's Investment Pool (TIP) versus the Merrill Lynch 1-3 year US Treas/Agency Index (ML) and the State Local Government Investment Pool (LGIP).



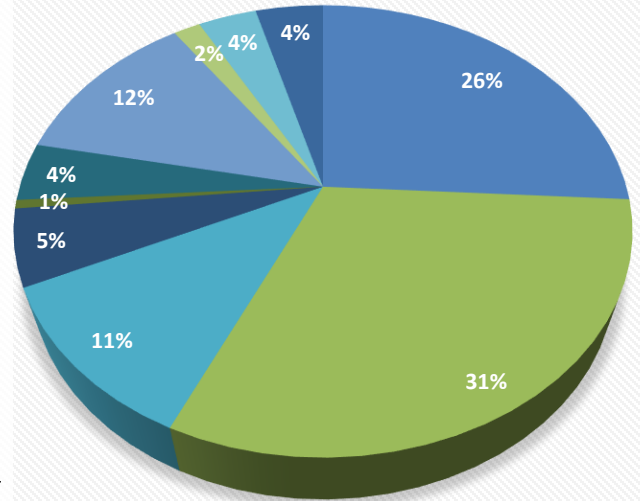
Distribution of Property Tax and Assessments

Taxes & Assessments	2022	2021
State School	\$69,915,915	\$64,221,052
Local School	83,370,780	81,676,421
Yakima County	30,209,333	33,500,802
County Road	14,694,226	10,797,170
County Flood	1,652,290	1,626,522
Fire Districts	11,239,622	10,902,822
Cities & Towns	32,816,986	32,325,863
EMS	4,543,577	4,472,598
Other Districts	9,943,039	9,817,456
Special Assessments	11,508,851	11,307,855
Total	\$269,894,619	\$260,648,561

Other Districts: Library, Port and Park Districts

Special Assessment Districts: Irrigation, Conservation, Mosquito, Diking, Drainage, Weed, Stormwater, Horticulture, County Road and Local Improvement Districts and State Forest Patrol Assessments

- State School - 26%
- Local School - 31%
- Yakima County - 11%
- County Road - 5%
- County Flood - 1%
- Fire Districts - 4%
- Cities & Towns - 12%
- EMS - 2%
- Other Districts - 4%
- Special Assessments - 4%



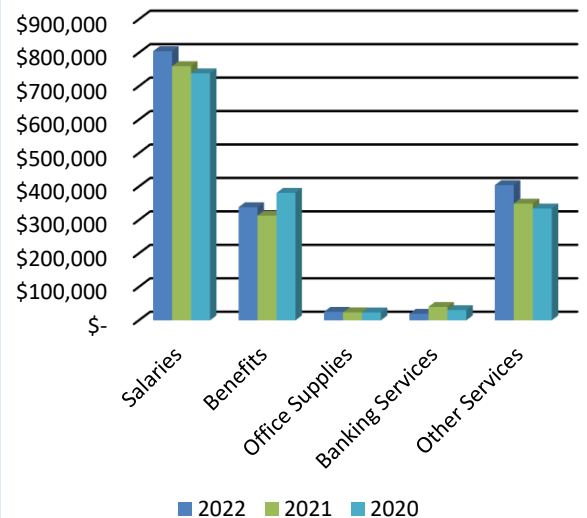
Property Tax and Assessment Collection (includes current year and delinquent taxes)				
Tax Year	Beginning Outstanding	Total Collection	Ending Outstanding	Percentage of Collection
2022	\$278,246,906	\$269,894,619	\$8,352,286	97.00%
2021	\$268,228,106	\$260,648,561	\$7,579,545	97.17%
2020	\$264,547,545	\$256,568,508	\$7,979,037	96.98%
2019	\$227,570,710	\$220,329,303	\$7,241,407	96.82%

Selected Performance Measures

Below is the data on selected Treasurer's Office services provided in the previous fiscal years. The amount of production completed annually varies depending on the citizens within Yakima County, as well as the multiple district and departments that we service.

Governmental Activities	2022	2021	2020
Property Tax Record Adjustments	3,043	2,663	2,125
Real Estate Excise Tax Affidavits	7,164	8,058	7,103
Property Tax Refunds	2,286	2,258	2,376

Yakima County Treasurer's Office Major Expenses



*Other Services include: Armored car, technology services, courthouse security, postage, telephones, advertising, rent, insurance, repairs and maintenance.

Independent Audit: The Yakima County Treasurer's Office does not issue separate financial statements; however, the Treasurer's Office contributes to a major portion of the analysis and statements included in the Yakima County Annual Comprehensive Financial Report (ACFR). Complete financial information can be found at Yakima County's website: <http://www.yakimacounty.us>.

2022 Accomplishments

Policies

Received recognition from the State Auditor's Office for the continual improvement in establishing strong internal controls in our office.

Innovations

Implemented new centralized receipting software, Teller, to streamline and enhance receipting services for Yakima County taxpayers, districts, and departments.

Implemented a Revenue Submission portal for deposits made by Yakima County districts and departments. This assists in more efficient and accurate transactions, in conjunction with the new Teller software.

Safety

Put in place new EPX credit and debit card readers for property tax payments, which provides for more secured transactions for the taxpayer.

Implemented Payee Positive Pay Fraud Protection Services for Yakima County District Court, which aids in the protection of public funds by reducing the risk of fraud in banking services.

Upcoming in 2023

New Debt Accounting Software

In the Fall of 2022, Yakima County Treasurer's Office began the process of designing and implementing a new debt accounting software. This will aid in our continued commitment to improve and enhance our office's operations. This project is expected to go-live in 2023.

Improvements in Receipting Property Tax Payments

We are working on streamlining the process of receipting property tax payments received from bill payer services. Instead of receipting each individual bill payer check, we will receive an electronic file with payment information and the funds will be sent to our bank the same day.

Centralized Receipting

The Treasurer's Office will continue to work with other county departments to expand receipting options at the Drive-Thru facility.

Economic Growth & Development in Yakima County

For the past 5 years, Yakima County has consistently realized strong economic growth. This has been related to a large variety of construction developments, to include agriculture, education, hospitality, manufacturing and more. This has resulted in a variety of revenue increases, to include sales tax and real estate excise taxes. Interest rates are anticipated to continue to increase over the coming year as a result of the Federal Reserve's attempts to stabilize inflation. The Treasurer's Office will continue to monitor the economic activities as they directly impact the revenue streams for Yakima County.



We want to hear from you
Do you like this report? Would you like to see other information included? Please let us know by contacting our Accounting Division at treasacc@co.yakima.wa.us.



City and County elected officials break ground on the new site (Summer 2020)

