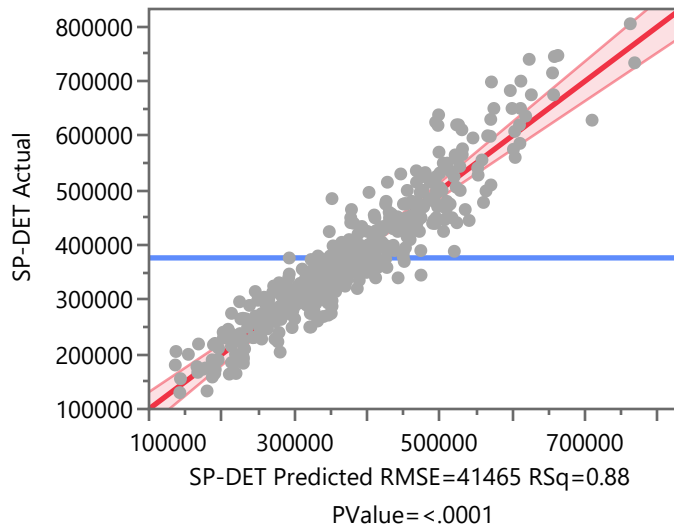
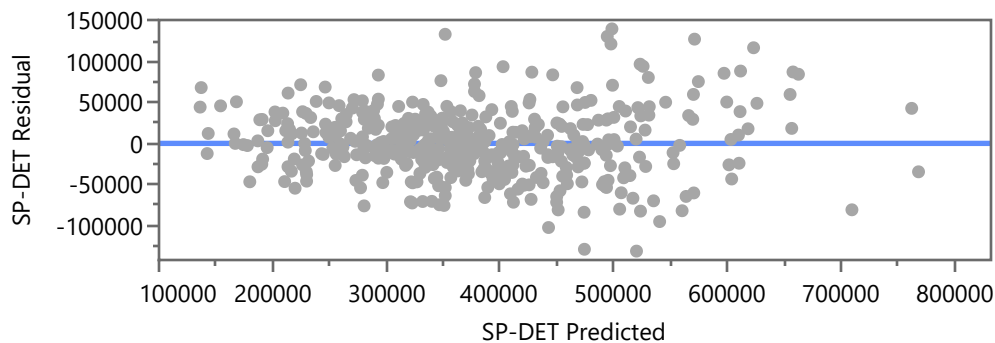
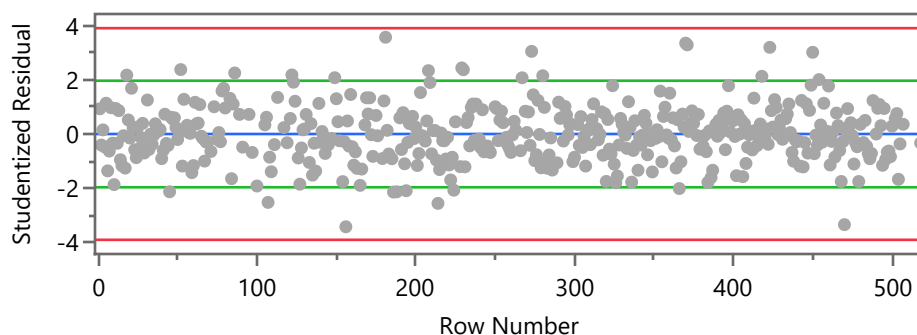


**Response SP-DET****Actual by Predicted Plot****Effect Summary**

Source	Logworth	PValue
Days Prior to Assessment	50.197	0.00000
MainFn	26.998	0.00000
FnBsmt	17.205	0.00000
UpprFn	13.927	0.00000
Cnd	6.702	0.00000
Qlty	4.545	0.00003
LnAcres	4.433	0.00004
AttGar	4.100	0.00008
Fixtures	2.052	0.00888
TempNbhd	1.646	0.02260
EffAge	1.615	0.02425
BltinGar	1.593	0.02555
UnfinBsmt	1.450	0.03547
CovPrchSf	1.438	0.03649
CoverSf	1.133	0.07356
AddFn	0.981	0.10459

**Residual by Predicted Plot**

**Response SP-DET****Studentized Residuals**

Externally studentized residuals with 95% simultaneous limits (Bonferroni) in red, individual limits in green.

**Summary of Fit**

RSquare	0.881129
RSquare Adj	0.873891
Root Mean Square Error	41465.17
Mean of Response	376520
Observations (or Sum Wgts)	454

**Analysis of Variance**

Source	DF	Sum of Squares	Mean Square	F Ratio
Model	26	5.442e+12	2.093e+11	121.7354
Error	427	7.3417e+11	1.7194e+9	<b>Prob &gt; F</b>
C. Total	453	6.1761e+12		<b>&lt;.0001*</b>

**Parameter Estimates**

Term	Estimate	Std Error	t Ratio	Prob> t
Intercept	196835.31	26943.78	7.31	<b>&lt;.0001*</b>
Days Prior to Assessment	-118.6312	6.882062	-17.24	<b>&lt;.0001*</b>
LnAcres	20613.951	4943.446	4.17	<b>&lt;.0001*</b>
TempNbhd[SL]	-8701.374	4517.614	-1.93	0.0548
TempNbhd[SLN]	-8642.068	5976.733	-1.45	0.1489
Qty[F+-F]	-4372.081	13012.86	-0.34	0.7370
Qty[A-F+]	1442.3918	8771.323	0.16	0.8695
Qty[A+-A]	19045.686	6766.214	2.81	<b>0.0051*</b>
Qty[G-A+]	9062.0543	5514.888	1.64	0.1011
Qty[G+-G]	16436.887	10033.63	1.64	0.1021
Qty[V-G+]	44192.127	15351.57	2.88	<b>0.0042*</b>
Qty[V+-V]	-7245.68	24976.3	-0.29	0.7719
Cnd[AV-FR]	40580.407	15280.95	2.66	<b>0.0082*</b>
Cnd[GD-AV]	20853.413	5235.424	3.98	<b>&lt;.0001*</b>
Cnd[VG-GD]	19437.076	7729.397	2.51	<b>0.0123*</b>
Cnd[EX-VG]	6655.0167	8732.092	0.76	0.4464
MainFn	85.416658	7.283758	11.73	<b>&lt;.0001*</b>
UpprFn	65.723236	8.215388	8.00	<b>&lt;.0001*</b>
AddFn	47.900905	29.45122	1.63	0.1046

**Response SP-DET****Parameter Estimates**

Term	Estimate	Std Error	t Ratio	Prob> t
UnfinBsmnt	25.37262	12.02704	2.11	0.0355*
FnBsmnt	51.473532	5.704108	9.02	<.0001*
Fixtures	4090.1162	1555.861	2.63	0.0089*
AttGar	43.541669	10.92649	3.98	<.0001*
BltinGar	29.059317	12.96777	2.24	0.0255*
CovPrchSf	38.317898	18.26359	2.10	0.0365*
CoverSf	29.974814	16.71043	1.79	0.0736
EffAge	-539.4043	238.5465	-2.26	0.0242*

**Prediction Expression**

196835.3132

+ -118.6312147 • Days Prior to Assessment

+ 20613.950703 • LnAcres

$$+ \text{Match}(\text{TempNbhd}) \begin{pmatrix} \text{"SL"} \Rightarrow -8701.373655 \\ \text{"SLN"} \Rightarrow -8642.067907 \\ \text{"SLV"} \Rightarrow 17343.441561 \\ \text{else} \Rightarrow . \end{pmatrix}$$

$$+ \text{Match}(\text{Qlty}) \begin{pmatrix} \text{"F"} \Rightarrow 0 \\ \text{"F+"} \Rightarrow -4372.081022 \\ \text{"A"} \Rightarrow -2929.689225 \\ \text{"A+"} \Rightarrow 16115.997138 \\ \text{"G"} \Rightarrow 25178.05139 \\ \text{"G+"} \Rightarrow 41614.938603 \\ \text{"V"} \Rightarrow 85807.065952 \\ \text{"V+"} \Rightarrow 78561.385532 \\ \text{else} \Rightarrow . \end{pmatrix}$$

$$+ \text{Match}(\text{Cnd}) \begin{pmatrix} \text{"FR"} \Rightarrow 0 \\ \text{"AV"} \Rightarrow 40580.406974 \\ \text{"GD"} \Rightarrow 61433.81949 \\ \text{"VG"} \Rightarrow 80870.89528 \\ \text{"EX"} \Rightarrow 87525.911951 \end{pmatrix}$$

**Response SP-DET****Prediction Expression**

$$\left( \text{else} \Rightarrow . \right)$$

+ 85.416658027 • MainFn  
 + 65.723235722 • UpprFn  
 + 47.900905055 • AddFn  
 + 25.372619696 • UnfinBsmt  
 + 51.473531954 • FnBsmt  
 + 4090.1162156 • Fixtures  
 + 43.541669152 • AttGar  
 + 29.059316688 • BltinGar  
 + 38.317898018 • CovPrchSf  
 + 29.974814076 • CoverSf  
 + -539.4042732 • EffAge

**Prediction Profiler**