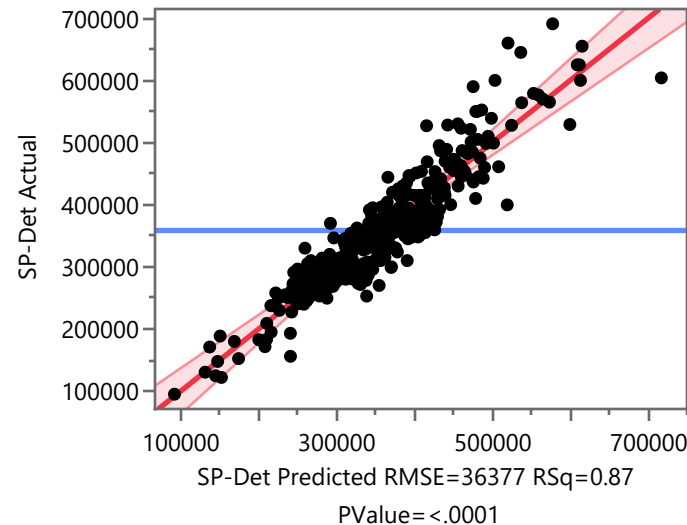


Response SP-Det

Actual by Predicted Plot

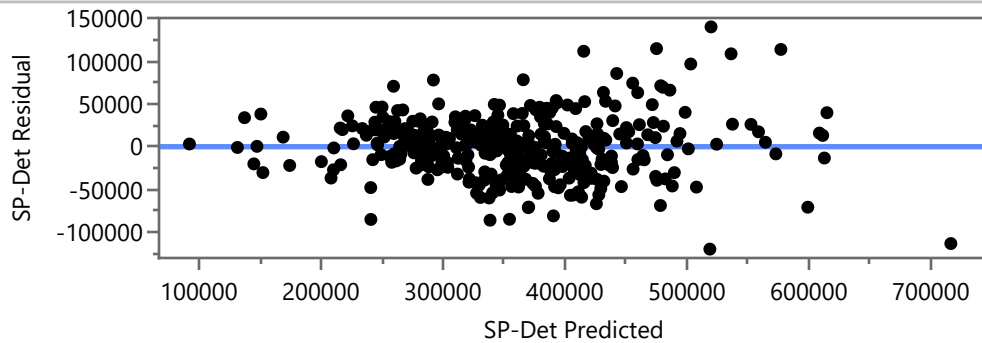
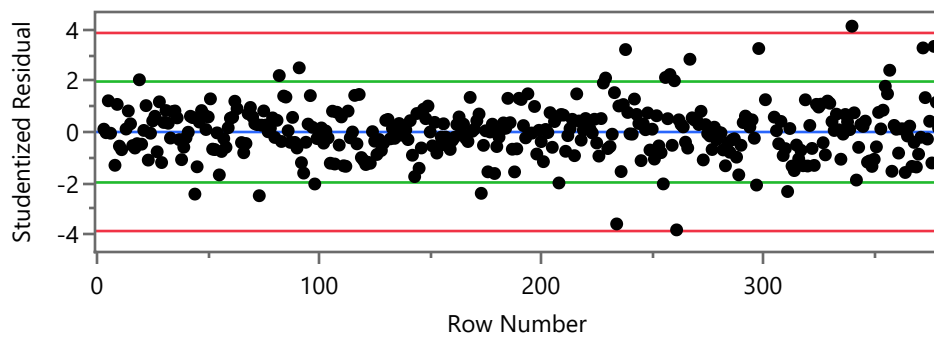


Effect Summary

Source	Logworth	PValue
Days Prior to Assessment	33.908	0.00000
MainFn	21.558	0.00000
UpprFn	15.564	0.00000
BsmtArea	11.920	0.00000
Cnd	8.018	0.00000
Qlty	5.585	0.00000
LnAcres	5.488	0.00000
Garage	4.645	0.00002
Style	3.415	0.00038
TempNbhd	2.156	0.00698
EffAge	1.628	0.02355
Fixtures	0.290	0.51338

Lack Of Fit

Source	DF	Sum of Squares	Mean Square	F Ratio
Lack Of Fit	336	4.4728e+11	1.3312e+9	24520.41
Pure Error	2	108578	54289	Prob > F
Total Error	338	4.4728e+11		<.0001*
			Max RSq	1.0000

Response SP-Det**Residual by Predicted Plot****Studentized Residuals**

Externally studentized residuals with 95% simultaneous limits (Bonferroni) in red, individual limits in green.

Summary of Fit

RSquare	0.866243
RSquare Adj	0.854371
Root Mean Square Error	36377.36
Mean of Response	358506.7
Observations (or Sum Wgts)	369

Parameter Estimates

Term	Estimate	Std Error	t Ratio	Prob> t
Intercept	143266.37	32465.29	4.41	<.0001*
Days Prior to Assessment	-95.5396	6.927663	-13.79	<.0001*
LnAcres	20569.979	4345.573	4.73	<.0001*
TempNbhd[TH]	-13833.1	5259.454	-2.63	0.0089*
TempNbhd[TH1]	-15444.12	6770.16	-2.28	0.0232*
Style[BG]	2619.242	17670.91	0.15	0.8823
Style[CC]	-27806.28	34322.61	-0.81	0.4184
Style[CO]	-11861.98	9603.147	-1.24	0.2176
Style[CP]	9474.877	9743.132	0.97	0.3315
Style[CU]	108028.86	28813.32	3.75	0.0002*
Style[FH]	-72045.29	34916.06	-2.06	0.0398*
Style[GD]	-12694.28	34177.3	-0.37	0.7106
Style[RN]	-7887.493	7606.152	-1.04	0.3005
Style[SE]	22275.186	15038.48	1.48	0.1395
Style[SL]	5352.7833	12572.01	0.43	0.6705

Response SP-Det**Parameter Estimates**

Term	Estimate	Std Error	t Ratio	Prob> t
Qlty[F+-F]	43526.316	18774.42	2.32	0.0210*
Qlty[A-F+]	16944.323	10222.45	1.66	0.0983
Qlty[A+-A]	-6285.196	6377.125	-0.99	0.3250
Qlty[G-A+]	13690.742	5513.495	2.48	0.0135*
Qlty[G+-G]	33432.43	9032.083	3.70	0.0003*
Qlty[V-G+]	9532.035	17745.11	0.54	0.5915
Cnd[AV-FR]	67089.087	17685.24	3.79	0.0002*
Cnd[GD-AV]	17619.367	5104.354	3.45	0.0006*
Cnd[VG-GD]	27006.029	8129.112	3.32	0.0010*
Cnd[EX-VG]	11262.013	9220.11	1.22	0.2228
EffAge	-690.9252	303.7407	-2.27	0.0235*
MainFn	83.831823	8.033405	10.44	<.0001*
UpprFn	69.935066	8.118428	8.61	<.0001*
Fixtures	1003.6368	1533.96	0.65	0.5134
Garage	43.907242	10.21715	4.30	<.0001*
BsmtArea	44.773615	6.063026	7.38	<.0001*

Response SP-Det**Prediction Expression**

143266.36919

+ -95.53959676 • Days Prior to Assessment

+ 20569.979426 • LnAcres

$$+ \text{Match}(\text{TempNbhd}) \begin{pmatrix} \text{"TH"} \Rightarrow -13833.10409 \\ \text{"TH1"} \Rightarrow -15444.121 \\ \text{"THCC"} \Rightarrow 29277.22509 \\ \text{else} \Rightarrow . \end{pmatrix}$$

$$+ \text{Match}(\text{Style}) \begin{pmatrix} \text{"BG"} \Rightarrow 2619.2419973 \\ \text{"CC"} \Rightarrow -27806.28271 \\ \text{"CO"} \Rightarrow -11861.97764 \\ \text{"CP"} \Rightarrow 9474.87698 \\ \text{"CU"} \Rightarrow 108028.86136 \\ \text{"FH"} \Rightarrow -72045.29421 \\ \text{"GD"} \Rightarrow -12694.28326 \\ \text{"RN"} \Rightarrow -7887.49315 \\ \text{"SE"} \Rightarrow 22275.186046 \\ \text{"SL"} \Rightarrow 5352.7832906 \\ \text{"TD"} \Rightarrow -15455.6187 \\ \text{else} \Rightarrow . \end{pmatrix}$$

$$+ \text{Match}(\text{Qty}) \begin{pmatrix} \text{"F"} \Rightarrow 0 \\ \text{"F+"} \Rightarrow 43526.316281 \\ \text{"A"} \Rightarrow 60470.639295 \\ \text{"A+"} \Rightarrow 54185.443379 \\ \text{"G"} \Rightarrow 67876.185522 \\ \text{"G+"} \Rightarrow 101308.61573 \\ \text{"V"} \Rightarrow 110840.65071 \\ \text{else} \Rightarrow . \end{pmatrix}$$

Response SP-Det**Prediction Expression**

$$+ \text{Match}(\text{Cnd}) \begin{pmatrix} \text{"FR"} \Rightarrow 0 \\ \text{"AV"} \Rightarrow 67089.086978 \\ \text{"GD"} \Rightarrow 84708.453629 \\ \text{"VG"} \Rightarrow 111714.48248 \\ \text{"EX"} \Rightarrow 122976.49574 \\ \text{else} \Rightarrow . \end{pmatrix}$$

$$+ -690.9252072 \cdot \text{EffAge}$$

$$+ 83.831822649 \cdot \text{MainFn}$$

$$+ 69.935065542 \cdot \text{UpprFn}$$

$$+ 1003.6367627 \cdot \text{Fixtures}$$

$$+ 43.907242462 \cdot \text{Garage}$$

$$+ 44.773615247 \cdot \text{BsmtArea}$$

Scaled Estimates

Nominal factors expanded to all levels

Continuous factors centered by mean, scaled by range/2

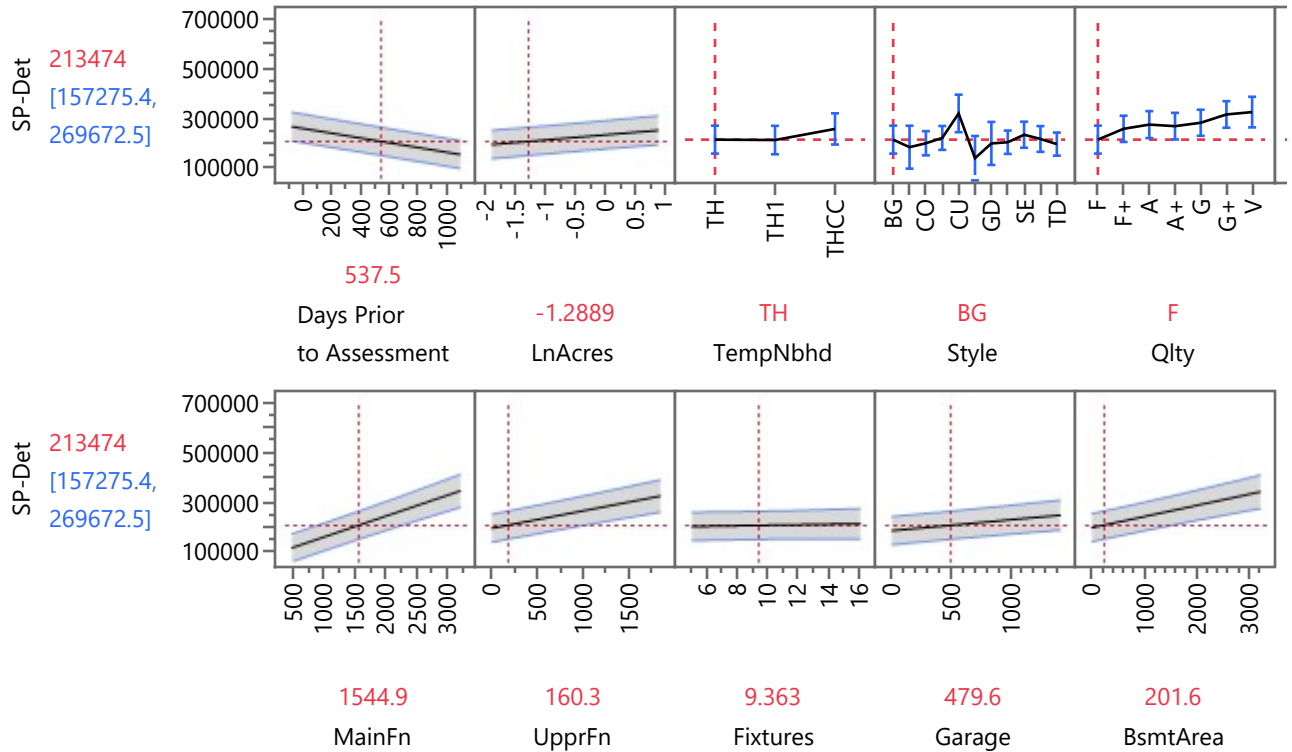
Term	Scaled Estimate		Std Error	t Ratio	Prob> t
Intercept	224689.5		24920.76	9.02	<.0001*
Days Prior to Assessment	-55460.74		4021.508	-13.79	<.0001*
LnAcres	28255.653		5969.233	4.73	<.0001*
TempNbhd[TH]	-13833.1		5259.454	-2.63	0.0089*
TempNbhd[TH1]	-15444.12		6770.16	-2.28	0.0232*
TempNbhd[THCC]	29277.225		9390.619	3.12	0.0020*
Style[BG]	2619.242		17670.91	0.15	0.8823
Style[CC]	-27806.28		34322.61	-0.81	0.4184
Style[CO]	-11861.98		9603.147	-1.24	0.2176
Style[CP]	9474.877		9743.132	0.97	0.3315
Style[CU]	108028.86		28813.32	3.75	0.0002*
Style[FH]	-72045.29		34916.06	-2.06	0.0398*
Style[GD]	-12694.28		34177.3	-0.37	0.7106
Style[RN]	-7887.493		7606.152	-1.04	0.3005
Style[SE]	22275.186		15038.48	1.48	0.1395
Style[SL]	5352.7833		12572.01	0.43	0.6705
Style[TD]	-15455.62		9180.858	-1.68	0.0932
Qlty[F+ -F]	43526.316		18774.42	2.32	0.0210*
Qlty[A-F+]	16944.323		10222.45	1.66	0.0983

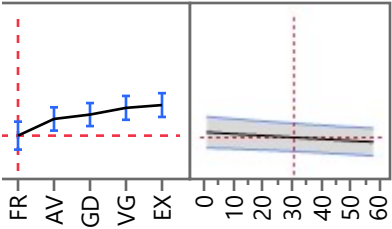
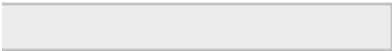
Response SP-Det

Scaled Estimates

Term	Scaled Estimate	Std Error	t Ratio	Prob> t
Qlty[A+-A]	-6285.196	6377.125	-0.99	0.3250
Qlty[G-A+]	13690.742	5513.495	2.48	0.0135*
Qlty[G+-G]	33432.43	9032.083	3.70	0.0003*
Qlty[V-G+]	9532.035	17745.11	0.54	0.5915
Cnd[AV-FR]	67089.087	17685.24	3.79	0.0002*
Cnd[GD-AV]	17619.367	5104.354	3.45	0.0006*
Cnd[VG-GD]	27006.029	8129.112	3.32	0.0010*
Cnd[EX-VG]	11262.013	9220.11	1.22	0.2228
EffAge	-19345.91	8504.738	-2.27	0.0235*
MainFn	113256.79	10853.13	10.44	<.0001*
UpprFn	63955.617	7424.302	8.61	<.0001*
Fixtures	5520.0022	8436.781	0.65	0.5134
Garage	30910.699	7192.872	4.30	<.0001*
BsmtArea	71234.822	9646.274	7.38	<.0001*

Prediction Profiler





FR 30.274
Cnd EffAge