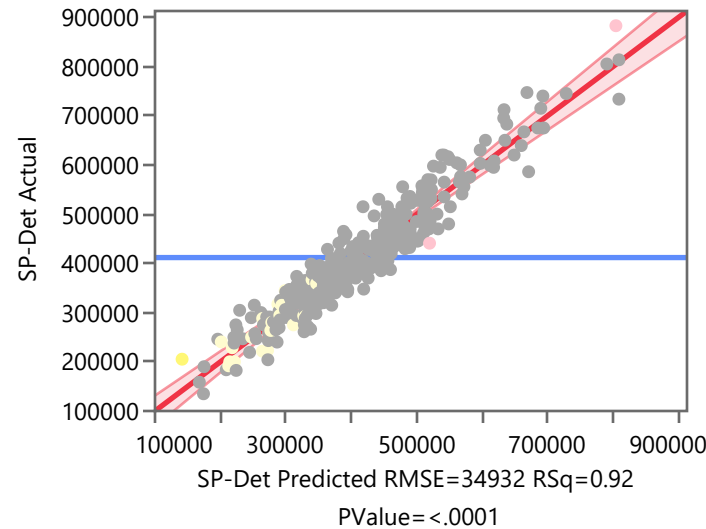


Response SP-Det

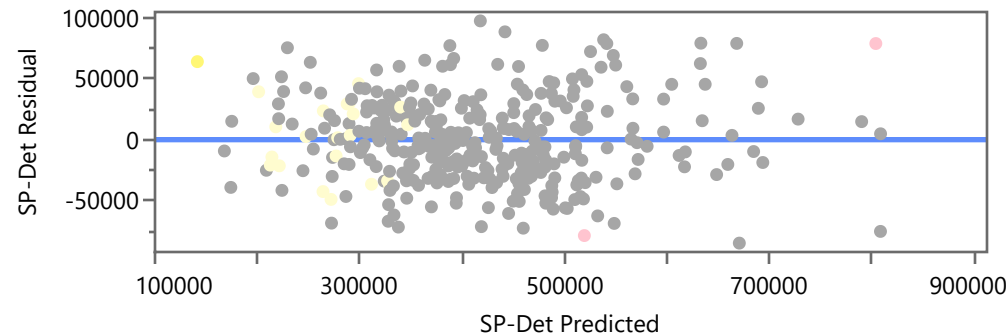
Actual by Predicted Plot

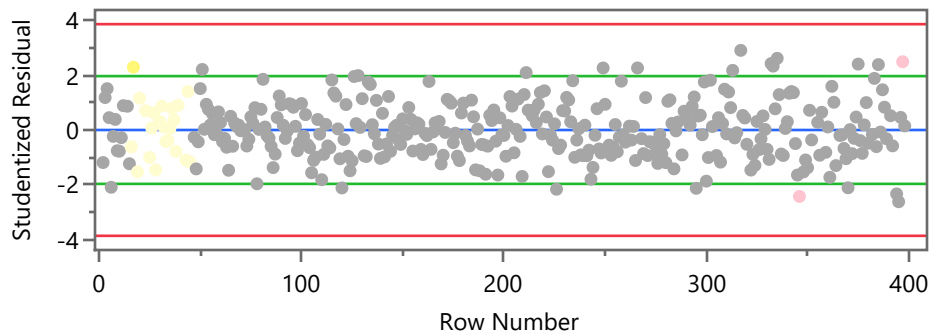


Effect Summary

Source	Logworth	PValue
MainFn	42.982	0.00000
UpprFn	22.267	0.00000
FnBsmt	20.564	0.00000
Qlty	14.659	0.00000
LNAcres	12.092	0.00000
DaysPrior3	9.646	0.00000
Cnd	8.719	0.00000
Age	3.496	0.00032
DaysPrior1	2.937	0.00116
AttGar	2.536	0.00291
UnfinBsmt	1.426	0.03747
BltinGar	1.413	0.03861
AddFn	1.099	0.07958
TempNbhd	0.982	0.10426
Fixtures	0.867	0.13589
DaysPrior2	0.029	0.93464

Residual by Predicted Plot



Response SP-Det**Studentized Residuals**

Externally studentized residuals with 95% simultaneous limits (Bonferroni) in red, individual limits in green.

Summary of Fit

RSquare	0.916869
RSquare Adj	0.910879
Root Mean Square Error	34931.83
Mean of Response	411718.8
Observations (or Sum Wgts)	373

Analysis of Variance

Source	DF	Sum of Squares	Mean Square	F Ratio
Model	25	4.67e+12	1.868e+11	153.0844
Error	347	4.2342e+11	1.2202e+9	Prob > F
C. Total	372	5.0934e+12		<.0001*

Parameter Estimates

Term	Estimate	Std Error	t Ratio	Prob> t
Intercept	224493.69	31389.33	7.15	<.0001*
LN Acres	26258.632	3530.265	7.44	<.0001*
TempNbhd[SL]	-2399.741	4196.836	-0.57	0.5678
TempNbhd[SLN]	-10416.73	5175.803	-2.01	0.0449*
DaysPrior1	-160.9634	49.11921	-3.28	0.0012*
DaysPrior2	1.8891548	23.01907	0.08	0.9346
DaysPrior3	-141.329	21.62333	-6.54	<.0001*
Age	-459.2923	126.316	-3.64	0.0003*
Qlty[F+-F]	9193.1285	12983.1	0.71	0.4794
Qlty[A-F+]	-1873.514	9326.588	-0.20	0.8409
Qlty[A+-A]	17123.985	6423.88	2.67	0.0080*
Qlty[G-A+]	8913.4528	5101.531	1.75	0.0815
Qlty[G+-G]	37741.37	9030.075	4.18	<.0001*
Qlty[V-G+]	83668.996	13817.65	6.06	<.0001*
Cnd[AV-FR]	25967.396	21906.79	1.19	0.2367
Cnd[GD-AV]	23160.742	5148.145	4.50	<.0001*
Cnd[VG-GD]	22325.375	6377.127	3.50	0.0005*
Cnd[EX-VG]	5043.7892	7702.098	0.65	0.5130
MainFn	106.2871	6.62647	16.04	<.0001*

Response SP-Det**Parameter Estimates**

Term	Estimate	Std Error	t Ratio	Prob> t
UpprFn	81.704938	7.694666	10.62	<.0001*
AddFn	44.646962	25.39215	1.76	0.0796
FnBsm	53.374473	5.270234	10.13	<.0001*
UnfinBsm	23.044244	11.03331	2.09	0.0375*
Fixtures	2091.0062	1398.914	1.49	0.1359
AttGar	30.554525	10.19041	3.00	0.0029*
BltinGar	25.081471	12.08049	2.08	0.0386*

Prediction Expression

224493.69316

+ 26258.631741 • LNAcres

$$+ \text{Match}(\text{TempNbhd}) \begin{pmatrix} \text{"SL"} \Rightarrow -2399.74078 \\ \text{"SLN"} \Rightarrow -10416.73394 \\ \text{"SLV"} \Rightarrow 12816.474724 \\ \text{else} \Rightarrow . \end{pmatrix}$$

+ -160.9634449 • DaysPrior1

+ 1.8891547609 • DaysPrior2

+ -141.3289555 • DaysPrior3

+ -459.292271 • Age

$$+ \text{Match}(\text{Qty}) \begin{pmatrix} \text{"F"} \Rightarrow 0 \\ \text{"F+"} \Rightarrow 9193.1284518 \\ \text{"A"} \Rightarrow 7319.613965 \\ \text{"A+"} \Rightarrow 24443.598633 \\ \text{"G"} \Rightarrow 33357.0514 \\ \text{"G+"} \Rightarrow 71098.421594 \\ \text{"V"} \Rightarrow 154767.41713 \\ \text{else} \Rightarrow . \end{pmatrix}$$

$$+ \text{Match}(\text{Cnd}) \begin{pmatrix} \text{"FR"} \Rightarrow 0 \\ \text{"AV"} \Rightarrow 25967.39646 \\ \text{"GD"} \Rightarrow 49128.138553 \end{pmatrix}$$

Response SP-Det**Prediction Expression**

```

match(End)
  "VG" => 71453.51314
  "EX" => 76497.302347
  else => .

```

+ 106.28710321 • MainFn

+ 81.704937737 • UpprFn

+ 44.646962167 • AddFn

+ 53.374472519 • FnBsmt

+ 23.044243523 • UnfinBsmt

+ 2091.0062478 • Fixtures

+ 30.554525153 • AttGar

+ 25.081471474 • BltinGar

Prediction Profiler