

# Yakima County Treasurer

## A Report to Our Citizens Fiscal Year 2024

### **Hlene Thomson, Yakima County Treasurer**

#### **How the Office Operates**

The County Treasurer's Office acts as a financial institution for the County departments, school districts, fire districts, special purpose districts and other units of local government, by receipting, disbursing, investing, and accounting for the funds of each of these entities. The Treasurer's Office is also charged with the collection of various taxes that benefit a wide range of governmental functions.

Some of the major responsibilities of the Treasurer's Office are as follows:

- Receipting and Accounting of Revenue
- Billing and Collection of Taxes and Assessments
- Disbursement of Funds
- Debt Management
- Cash and Investment Portfolio Management
- Banking Services
- Real Property/Mobile Home Transfers
- Real and Personal Property Foreclosure
- Property Tax Adjustments and Refunds

Demographics	Yakima County
Estimated Population	263,200
Median Household Income	\$69,525
Median Age	33.8
Parcel Count	108,714
Labor Force Participation	65.2%

Sources: MRSC/WA OFM

#### **Table of Contents**

TIP Market Values  
TIP Interest Earnings  
TIP Historical Performance vs Benchmarks...2

Property Tax & Assessment Distribution  
Property Tax & Assessment Collection  
Performance Measures  
Major Expenses.....3

Accomplishments  
Looking Ahead .....4

#### **Mission Statement**

To prudently handle and manage the public funds that have been entrusted to our care, to serve the taxpayers and our business partners with respect and professionalism, and to provide accurate financial reporting services.

#### **Contact Us**

128 N Second St., Room 115, Yakima  
PO Box 22530, Yakima WA 98907

[www.yakimacounty.us/treasurer](http://www.yakimacounty.us/treasurer)

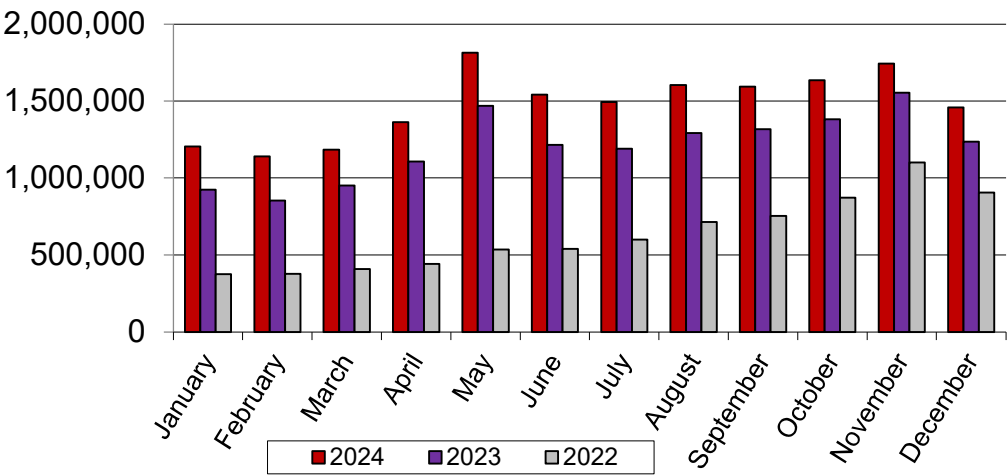
(509) 574-2800 Tax Information

(509) 574-2780 Accounting Division

County Treasurer's  
Investment Pool Portfolio

This comparison of Interest Earnings shows the performance of the TIP in generating additional revenue for the districts and departments within Yakima County. The amount generated in 2024 was \$17,770,249 compared to \$14,485,449 in 2023; an increase of earnings in the amount of \$3,284,800.

Treasurer's Investment Pool Interest Earnings

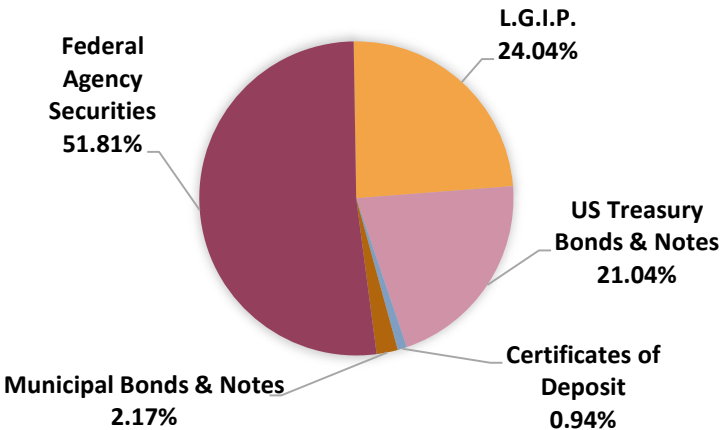


Treasurer's Investment Pool  
Asset Allocation

This graph is a breakdown of fair market values by types of securities in which the pool is invested in as of the end of the fiscal year.

	2024	2023
LGIP	24.04%	19.27%
US Treas	21.04%	16.26%
CD	0.94%	1.02%
Municipal Bonds	2.17%	2.41%
Fed Agency	51.81%	61.04%

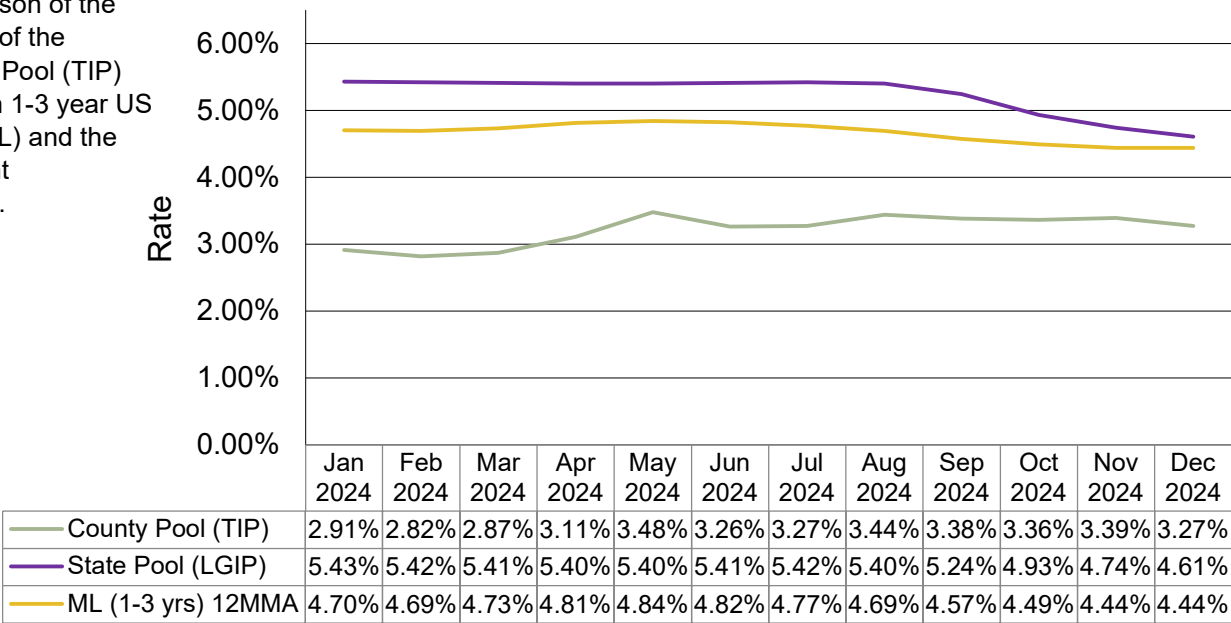
Treasurer's Investment Portfolio Market Values



Pool Interest Rate Comparison

This graph is a comparison of the monthly earnings rates of the Treasurer's Investment Pool (TIP) versus the Merrill Lynch 1-3 year US Treas/Agency Index (ML) and the State Local Government Investment Pool (LGIP).

County Pool (TIP) - Historical Performance vs. Benchmarks

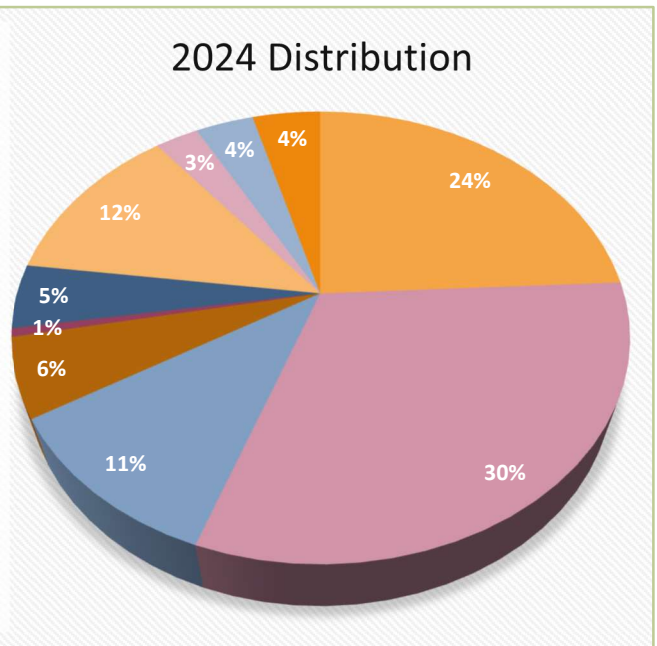


### Distribution of Property Tax and Assessments

Taxes & Assessments	2024	2023
State School	69,241,174	\$65,684,799
Local School	89,443,519	86,607,572
Yakima County	31,157,223	29,731,490
County Road	16,007,688	16,192,204
County Flood	1,740,519	1,699,445
Fire Districts	13,135,258	11,667,450
Cities & Towns	34,990,024	34,012,596
EMS	7,832,532	4,673,248
Other Districts	10,461,243	10,225,765
Special Assessments	12,261,510	11,853,456
<b>Total</b>	<b>\$286,270,690</b>	<b>\$272,348,024</b>

**Other Districts:** Library, Port and Park Districts  
**Special Assessment Districts:** Irrigation, Conservation, Mosquito, Diking, Drainage, Weed, Stormwater, Horticulture, County Road and Local Improvement Districts and State Forest Patrol Assessments

- State School - 24%
- Local School - 31%
- Yakima County - 11%
- County Road - 6%
- County Flood - 1%
- Fire Districts - 4%
- Cities & Towns - 12%
- EMS - 3%
- Other Districts - 4%
- Special Assessments - 4%

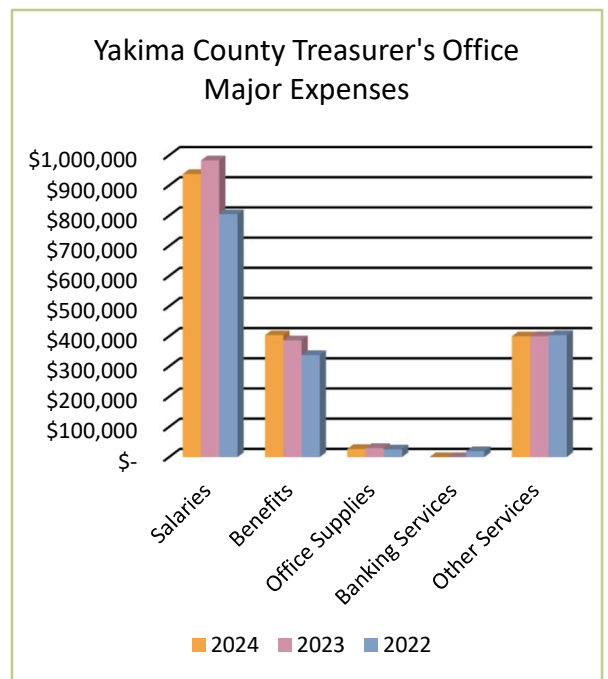


<b>Property Tax and Assessment Collection</b> (includes current year and delinquent taxes)				
Tax Year	Beginning Outstanding	Total Collection	Ending Outstanding	Percentage of Collection
2024	\$297,052,558	\$286,270,690	\$10,781,868	96.37%
2023	\$281,576,227	\$272,348,024	\$9,228,203	96.72%
2022	\$278,246,906	\$269,894,619	\$8,352,287	97.00%
2021	\$268,228,106	\$260,648,561	\$7,579,545	97.17%

### Selected Performance Measures

Below is the data on selected Treasurer's Office services provided in the previous fiscal years. The amount of production completed annually varies depending on the citizens within Yakima County, as well as the multiple district and departments that we service.

Governmental Activities	2024	2023	2022
Property Tax Record Adjustments	2,989	2,918	3,043
Real Estate Excise Tax Affidavits	5,715	5,785	7,164
Property Tax Refunds	2,358	2,299	2,286



\*Other Services include: Armored car, technology services, courthouse security, postage, telephones, advertising, rent, insurance, repairs and maintenance.

Independent Audit: The Yakima County Treasurer's Office does not issue separate financial statements; however, the Treasurer's Office contributes to a major portion of the analysis and statements included in the Yakima County Annual Comprehensive Financial Report (ACFR). Complete financial information can be found at Yakima County's website: <http://www.yakimacounty.us>.

## 2024 Accomplishments

### Innovations

The Yakima County Treasurer's Office has continued to modernize how we manage and report department and district debt. We have implemented Sympro Debt to provide concise and accurate reporting of new and outstanding debt amounts. It also reduces the data entry workload and has increased accuracy within the debt reporting.

### Collaboration

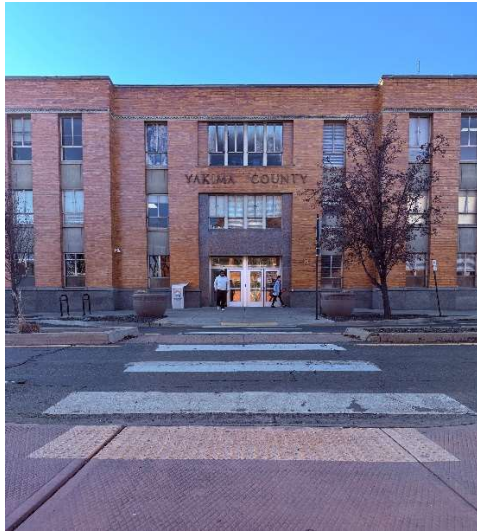
With our ERP system, we continue to maximize the software to its fullest potential. This year we implemented the integration of receipting customer invoices for other departments. This was a collaborative effort between multiple departments which resulted in streamlined processes.

### Development

Assisted in the issuance of over \$1.7 million in new loans to local government entities from the Supporting Investments in Economic Development (SIED) fund. This was matched with a grant portion awarded to each borrower. The loan/grant funding supports the growing infrastructure needed within our County to enhance economic growth within our valley.

### Safety

The Yakima County Treasurer's Office successfully awarded our Banking Services Contract to Key Bank, which enhanced our internal controls for public funds.



## Upcoming in 2025

### Economic Growth and Development

We are in the process of replacing our legacy tax and assessment system which is 28 years old. This new system will allow Yakima County to bring in new technology with features that will assist with streamlining our operations. At the end of 2024 we were working with three companies to have tax system demonstrations. In 2025 we will be working towards a company selection, contract negotiations and the beginning stages of implementation of the new system.

### Policy

The Treasurer's Office has submitted an updated Investment Policy to the Washington Public Treasurer's Associations for approval in 2025. This policy establishes the objectives and parameters regarding investment activity in the County, while maintaining safety procedures for public funds.

### Support

The Treasurer's Office will continue to provide taxpayers and homeowners with resources, such as Washington Homeowner Assistance Fund (HAF), for assistance on paying delinquent property taxes to avoid foreclosure.

### We want to hear from you.

Do you like this report? Would you like to see other information included? Please let us know by contacting our Accounting Division at [treasacc@co.yakima.wa.us](mailto:treasacc@co.yakima.wa.us)