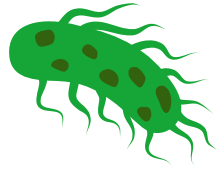




Disinfecting Your Well



It is recommended you disinfect your well when:



Fecal coliform or E. coli are found in the water



The well has been flooded



After repairs or maintenance



There is loss of pressure due to pump failure or a power outage



There is a change in water color, taste, or odor

Follow these steps to disinfect your well or hire a professional.
Use bottled water until you have disinfected and tested your well.

1 Preparation

- Turn off the electricity to the well pump and clear any garbage on top of the well.
- Inspect the well for damage and hire a qualified electrician or well professional if any repairs are needed.
- **Bypass or switch off water softeners and treatment systems to prevent damage.**



2 Clear the Water

- After clearing any garbage, turn on the electricity, start the pump, and run water from the nearest outside faucet until it is clear.

3 Pour the Chlorine Mixture

- For a 6-inch wide well, use 1 cup of unscented chlorine bleach per 20 feet of depth.
- Mix the bleach with 3-5 gallons of water.
- **Remove the well cap and pour the mixture into the well with a funnel, avoiding electrical connections.**
- If you have a larger well or are unsure of its depth, contact the Yakima Health District.



Well Depth	Cups of Chlorine
40 feet	2 cups
60 feet	3 cups
80 feet	4 cups
100 feet	5 cups
150 feet	7.5 cups
200 feet	10 cups
300 feet	15 cups

4 Mix the Chlorinated Water

- Attach a clean garden hose to an outdoor faucet nearest to your well and place the other end of the hose into the well casing.
- **Rinse the inside of the well casing with the hose for 5-10 minutes.**



5 Flush the Chlorinated Water

- Run all faucets in your home until you smell chlorine.
- Turn off all faucets and let the mixture in the well and plumbing for 12 hours.
- **After 12 hours, attach a hose to the nearest outside faucet and drain the chlorinated water onto an area without plants, such as a driveway.** Avoid streams and ponds.
- Run all faucets in the home until the chlorine odor disappears.



6 Test Your Well Water

- Test your well water for coliform bacteria 7-10 days after disinfection.
- If fecal coliform or E. coli are present, repeat the disinfection process.
- Use bottled water or boil your water for 10 minutes until tests confirm your well water is safe to drink.



Have questions? Contact us at
509-249-6508 or YHD.Help.Desk@co.yakima.wa.us